

COMPLEXE CRÉMAZIE

50 Crémazie



110 Crémazie



140 Crémazie



AVAILABILITIES

WELL AMENITIZED MULTI TENANT CAMPUS

50 Crémazie			
Floor	Suite	Size (sq. ft.)	Available
8	805	12,440	Immediately
6	610	12,440	Immediately
4	401	13,654	Immediately
3	300	24,880	Immediately

BEAUTIFULLY RENOVATED CONTIGUOUS BLOCKS

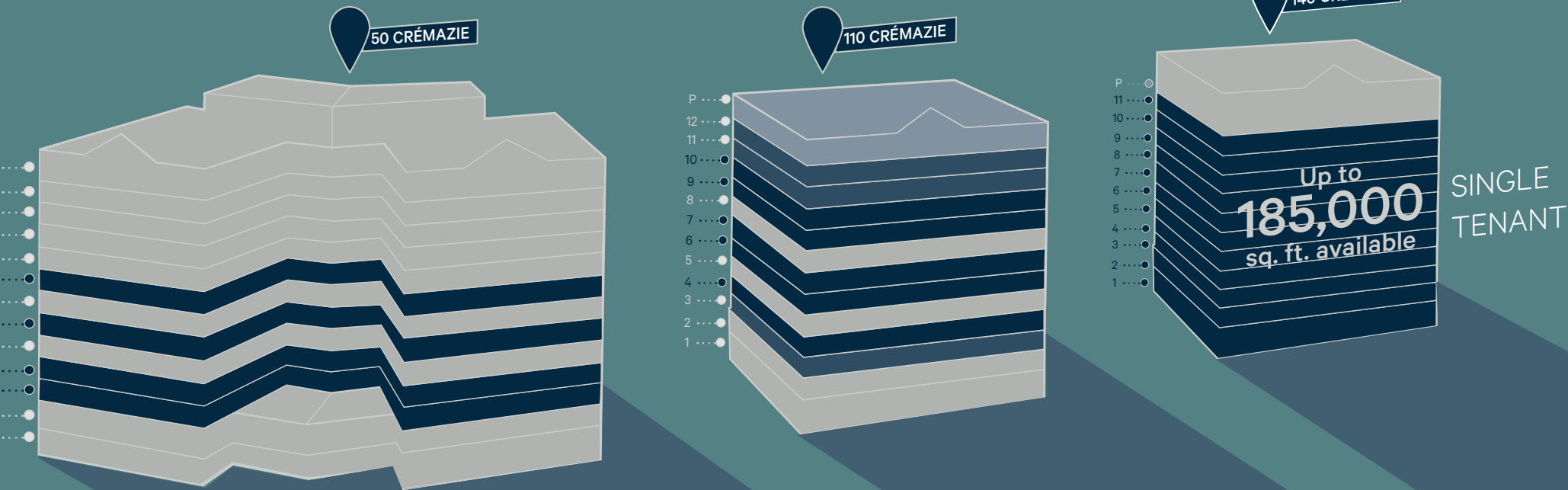
110 Crémazie			
Floor	Suite	Size (sq. ft.)	Available
Penthouse	1401	16,688	Immediately
12	1200	16,770	Q4 2024
11	1100	16,770	Q4 2024
10	1000	16,770	Immediately
9	900	16,770	Immediately
7	700	16,770	Immediately
6	600	17,594	Immediately
4	400	16,770	Immediately
3	300	16,770	Q4 2024

MAJOR TENANT OPPORTUNITY

140 Crémazie			
Floor	Suite	Size (sq. ft.)	Available
11	1100	6,000	Immediately
1-10	Full Floors	17,800	Immediately

- Occupied
- Vacant
- Penthouse
- Future vacancy

contiguous



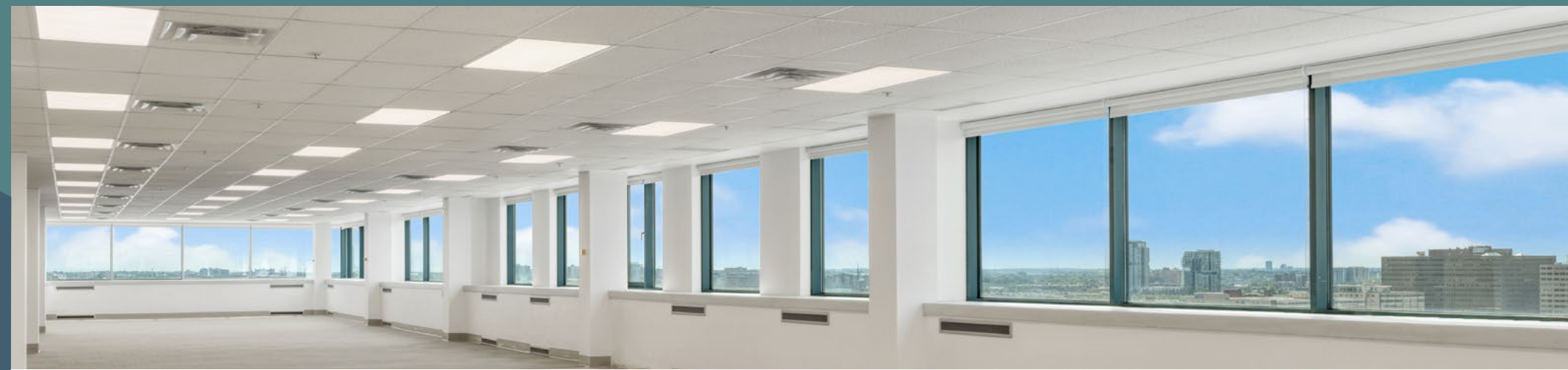
PICTURES



140 Crémazie



110 Crémazie



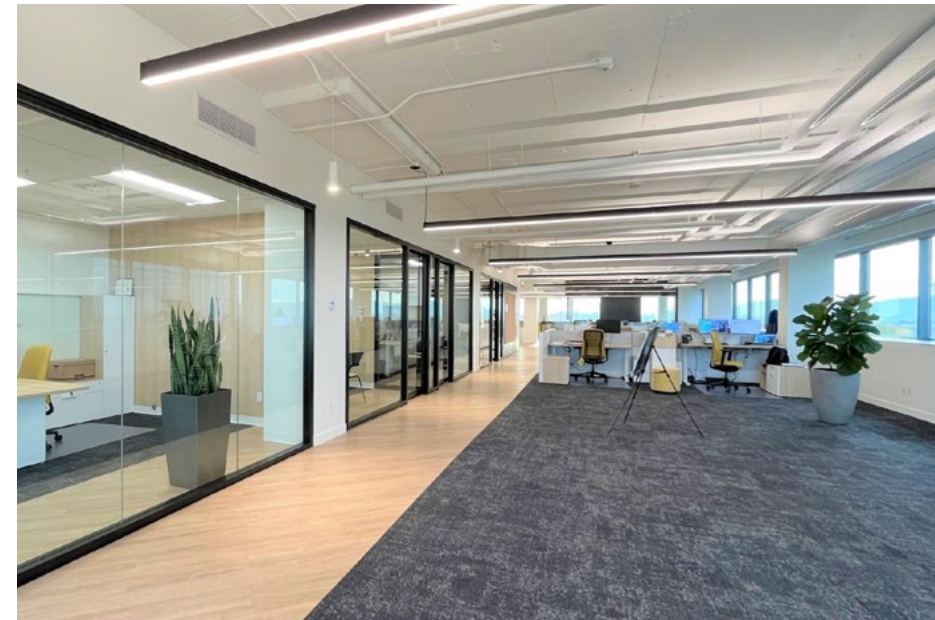
PICTURES



HIGHLIGHTS



110 Cremazie



110 Cremazie

COMPLEXE CREMAZIE

- Unobstructed 360 views of Montreal
- Abundant natural light
- Prominent signage opportunity on the building façade
- 106,000 cars pass throughout the day
- Penthouses available
- Full floor availability
- Parking available (ratio 1 : 1000)
- Bike storage and showers will be available in 2024
- Loading dock

Recent renovations include:

- Cap Ex
- Full Lobby
- Elevators
- Hallways
- Restrooms
- New HVAC systems

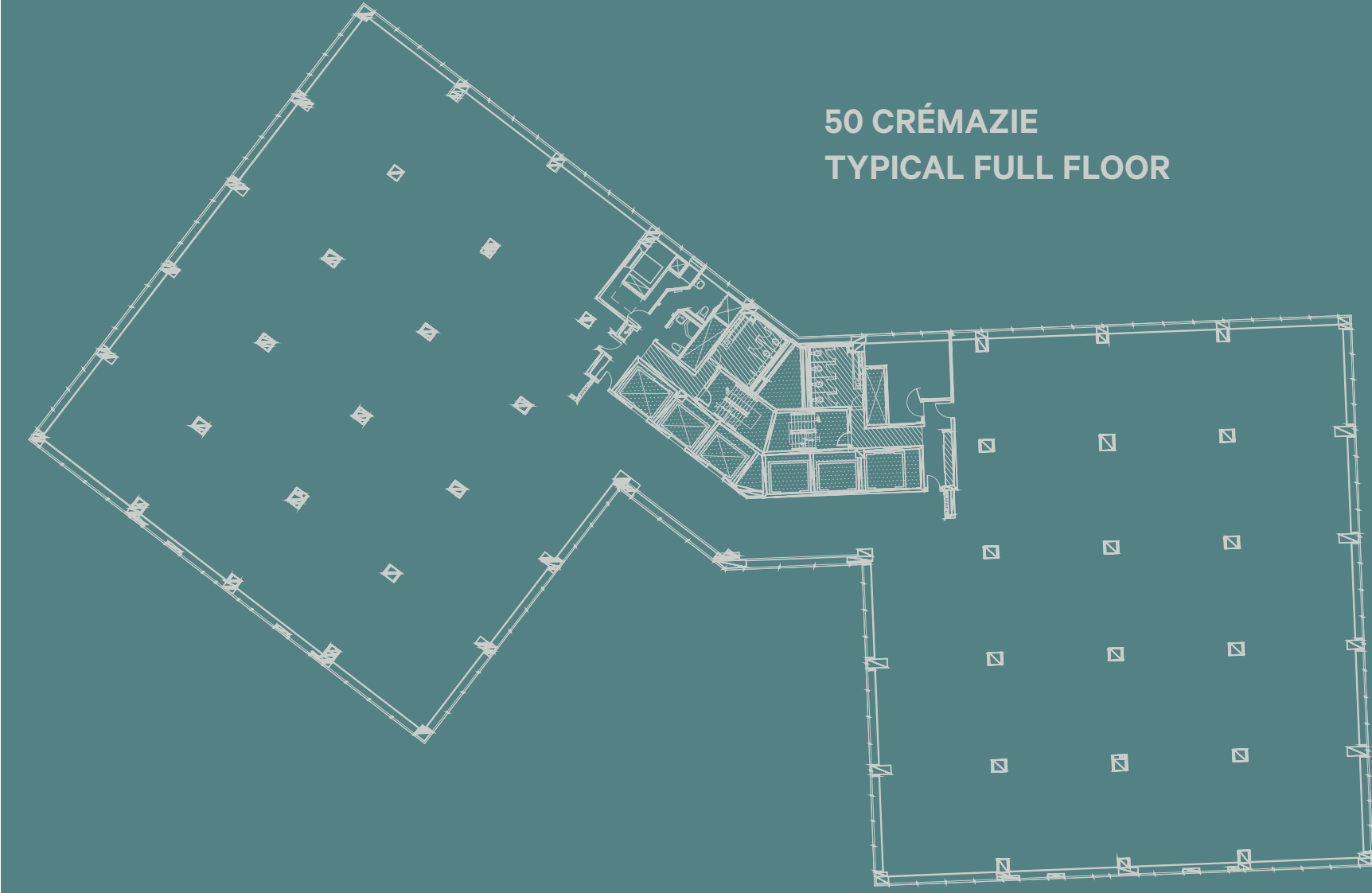


RENTAL DETAILS

	50 Crémazie	110 Crémazie	140 Crémazie
Net Rent	Please contact listing agent		
Additional Rent (2024 est.)	\$16.52	\$17.00	\$16.19
Cleaning	Included		
Electricity	\$1.25	\$1.25	\$1.25

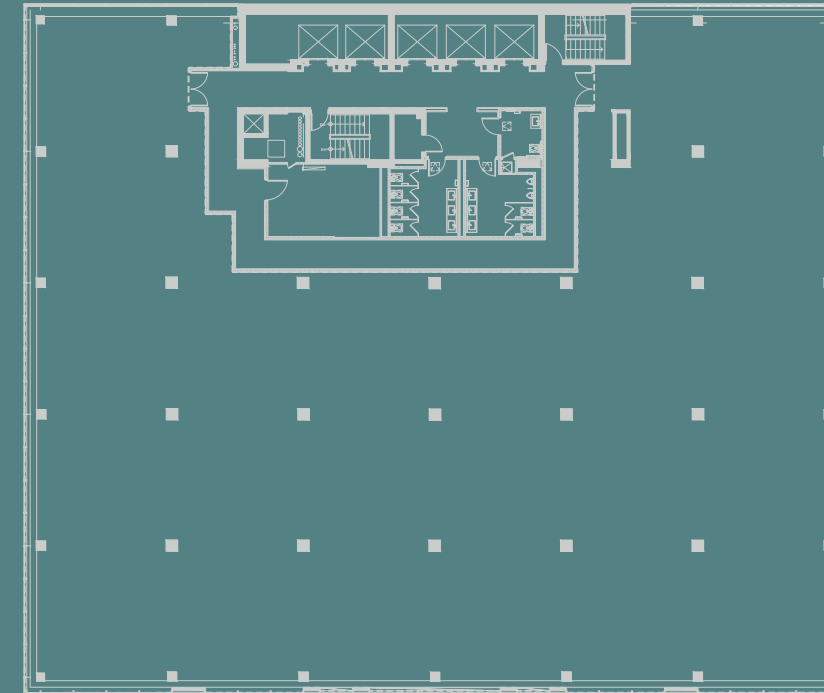
TYPICAL FLOOR AND COLUMN SPANS

50 CRÉMAZIE
TYPICAL FULL FLOOR



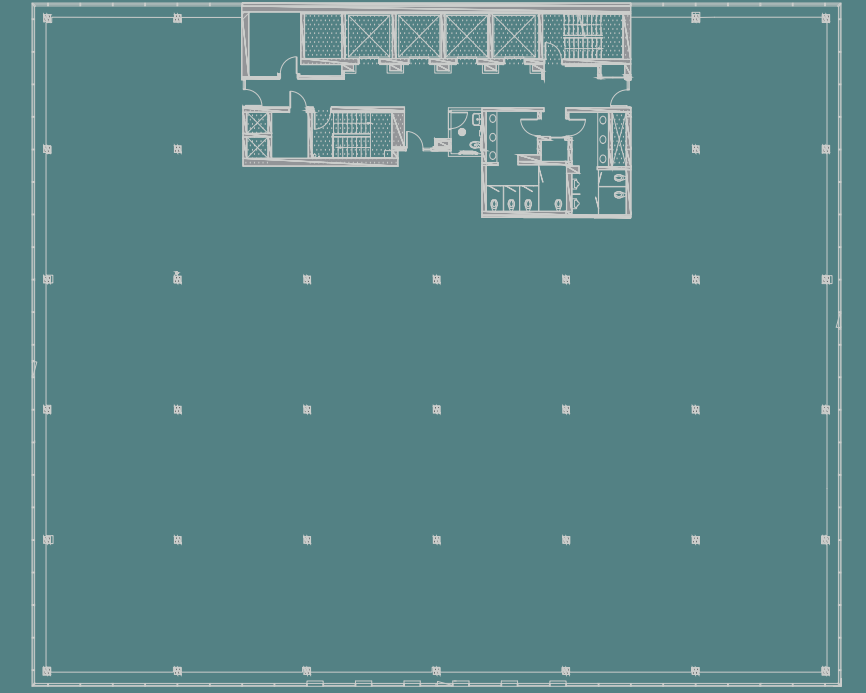
Typical Floor Plate 24,880 sq. ft.

110 CRÉMAZIE
TYPICAL FULL FLOOR



Typical Floor Plate 16,770 sq. ft.

140 CRÉMAZIE
TYPICAL FULL FLOOR





Typical Floor Plate 17,800 sq. ft.

M A P











Transit

-  10-minute walking distance to Crémazie metro station
-  STM Bus 19 31 52 54 56 100 135 146 192 460
-  7-minute drive to Sauvé train station
-  Extensive network of bike trails

-  Drive Times
 - 14-minute to Laval
 - 15-minute to Anjou
 - 20-minute to Brossard
-  21-minute to Montréal-Pierre Elliott Trudeau International Airport

Jarry Park Village Amenities

-  Fitness Center
-  Retail/Grocery
-  Park
-  Restaurant
-  Bakery
-  Daycare
-  Salon/Spa
-  Cafe

Contact Us

Eugenia Olshevskaya
 Transaction Manager
 +1 514 375 2506
 eugenia.olshevskaya@cbre.com
 Commercial Real Estate Broker

Nari Aznavour
 Director, Client Success
 +1 514 849 3298
 nari.aznavour@cbre.com
 Commercial Real Estate Broker

Bryan Greenberg
 Associate Vice President
 +1 514 375 2507
 bryan.greenberg@cbre.com
 Commercial Real Estate Broker

CBRE Limited | Real Estate Agency
 1250 René-Lévesque Boulevard West, Suite 2800, Montreal (Qc) H3B 4W8 www.cbre.ca

This disclaimer shall apply to CBRE Limited, Real Estate Agency, and to all other divisions of the Corporation, to include all employees and independent contractors ("CBRE"). The information set out herein, including, without limitation, any projections, images, opinions, assumptions and estimates obtained from third parties (the "Information") has not been verified by CBRE, and CBRE does not represent, warrant or guarantee the accuracy, correctness and completeness of the Information. CBRE does not accept or assume any responsibility or liability, direct or consequential, for the Information or the recipient's reliance upon the Information. The recipient of the Information should take such steps as the recipient may deem necessary to verify the Information prior to placing any reliance upon the Information. The Information may change and any property described in the Information may be withdrawn from the market at any time without notice or obligation to the recipient from CBRE. CBRE and the CBRE logo are the service marks of CBRE Limited and/or its affiliated or related companies in other countries. All other marks displayed on this document are the property of their respective owners. All Rights Reserved. Mapping Sources: Canadian Mapping Services canadamapping@cbre.com; DMTI Spatial, Environics Analytics, Microsoft Bing, Google Earth.