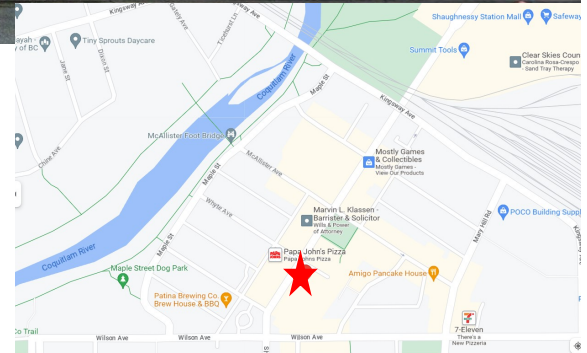




# OFFICE SPACE For Lease



## OFFICE SPACE Port Coquitlam

310-2540 Shaughnessy Street, Port Coquitlam  
1,572 sq ft

For more information, please contact

**Bobbi Crandall** PREC\* 778.773.5157

REALTOR®

E [cbobbi@telus.net](mailto:cbobbi@telus.net)

W [tullisrealty.com](http://tullisrealty.com)

This communication is not intended to cause or induce breach of an existing agency agreement. Although this information has been received from sources deemed reliable, we assume no responsibility for its accuracy and without offering advice, make this submission to prior sale or lease, change in price or terms, and withdrawal without notice.



# Executive Summary

---

## LOCATION

Located in the heart of downtown Port Coquitlam on Shaughnessy Street, this unit is on a transit route and blocks from the Westcoast Express. Great opportunity. Located near trails, parks and the downtown core, just a block from City Hall.

## OPPORTUNITY

This third floor unit has reception, open floor plan, 2 private offices and kitchenette.

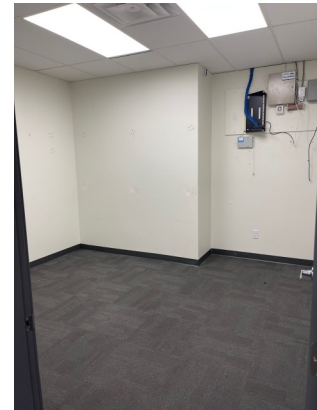
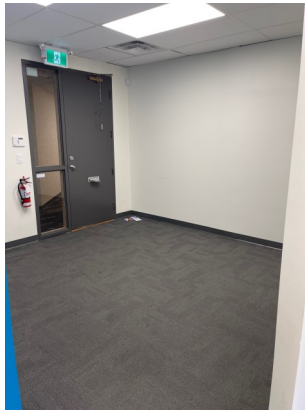
Base Rate \$16.00 psf per annum

Op Cost Rate \$12.00 psf per annum

**Total Rent \$3,668.00 + GST per month**

## ZONING

CC Community Commercial—Ask Agent for further details



For more information, please contact

---

**Bobbi Crandall** PREC\* 778.773.5157

REALTOR®

E [cbobbi@telus.net](mailto:cbobbi@telus.net)

W [tullisrealty.com](http://tullisrealty.com)

