

UNIT 250 - 610 SIXTH STREET, NEW WESTMINSTER
OFFICE SPACE AT ROYAL CITY CENTRE WITH OPTIONS TO DEMISE

**FOR
LEASE**

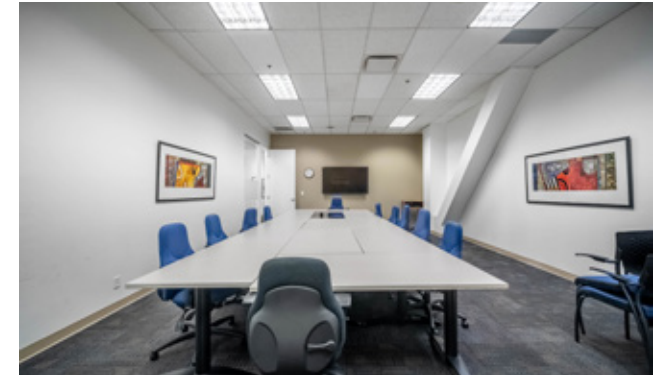


WILLIAM | WRIGHT

Commercial Real Estate Services

MARK NEMISH
mark@williamwright.ca
604.428.5255

BIKRAM SINGH
bikram@williamwright.ca
604.545.0636



Located in major retail centre



Demised options available



Major anchor tenants



3 levels of underground parking

OVERVIEW

Rare Opportunity to lease 10,749 square feet that can be demised to a minimum of 2600 square feet to fit any businesses need. This office space is located on a high-profile intersection in New Westminister's Uptown Core. C-3 zoning allows for wide range of uses.

Royal City Centre is an enclosed community centre located in the heart of New Westminister. Surrounded by high density residential and store front community retail. The area contains the highest concentration of retail in the City in addition to other services and amenities such as medical, recreational and public service facilities. Anchored by 110,000 SF Walmart and Save on Foods, and home to a 37,000 SF Fraser Health clinic on the second floor. The centre is perfect for regional retail, service, food, neighborhood services, and office opportunities.



SIZE

+/- 10,749 SQFT

PARKING

Ample

ZONING

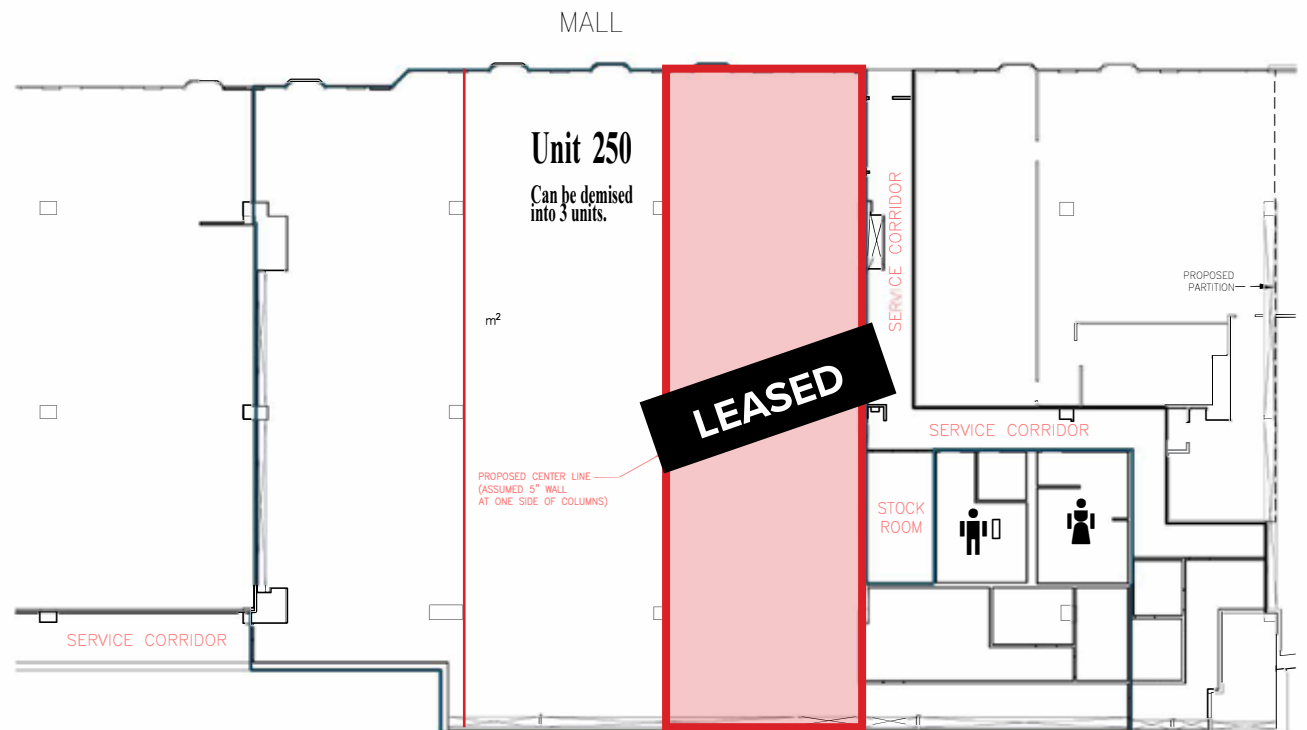
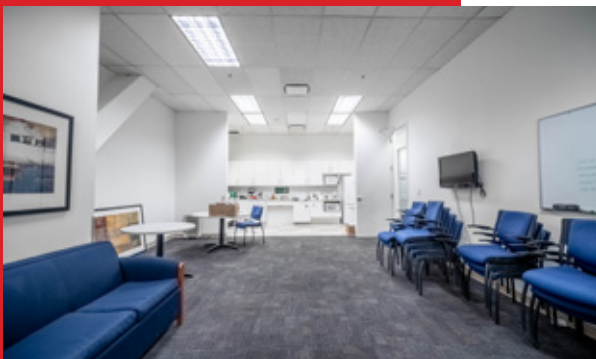
C-3

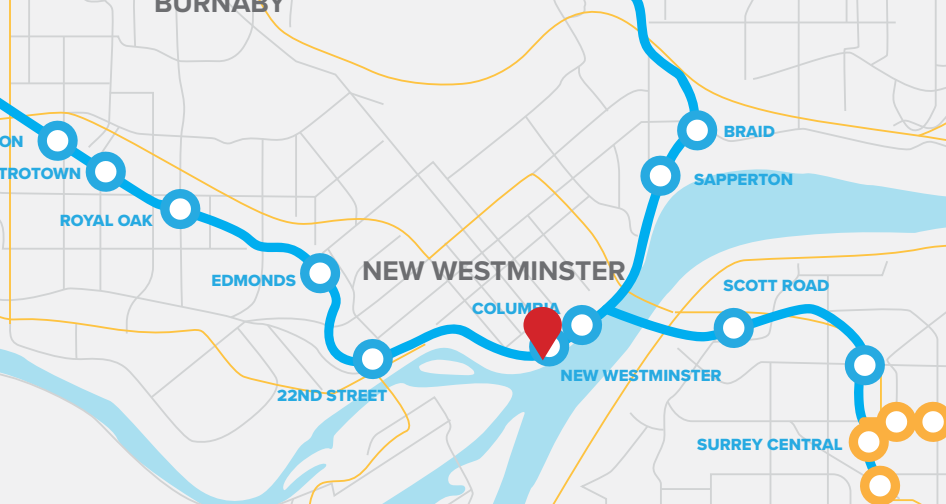
BASIC RENT

\$15.00/FT

ADDITIONAL RENT

\$11.92/FT





LOCATION

The Subject Property is also conveniently positioned close to major bus routes with direct links to the SkyTrain stations and a short drive away from the Trans-Canada Highway and Lougheed Highway, connecting New Westminister to all of Metro Vancouver including the North Shore, Fraser Valley, and the Tri-Cities.



WALK SCORE

87



BIKE SCORE

74

FOR MORE INFORMATION CONTACT

MARK NEMISH
mark@williamwright.ca
604.428.5255

BIKRAM SINGH
bikram@williamwright.ca
604.545.0636