



952 Main Street

Winnipeg, MB

PROPERTY HIGHLIGHTS

- Located on the northwest corner of Flora Avenue and Main Street just minutes from Portage & Main
- Good access to public transportation routes
- 2 on-site parking stalls available for \$40/month
- Building is professionally managed and maintained
- Building also features a modern front lobby
- Ideal space for medical, insurance, or accounting uses among other professional services
- 791 sq. ft. available on the second floor
- \$16.00 per sq. ft. per annum gross rental rate

For more information please contact:

Mario Posillipo

Senior Advisor - Sales & Leasing
204.943.5700
mario.posillipo@capitalgrp.ca

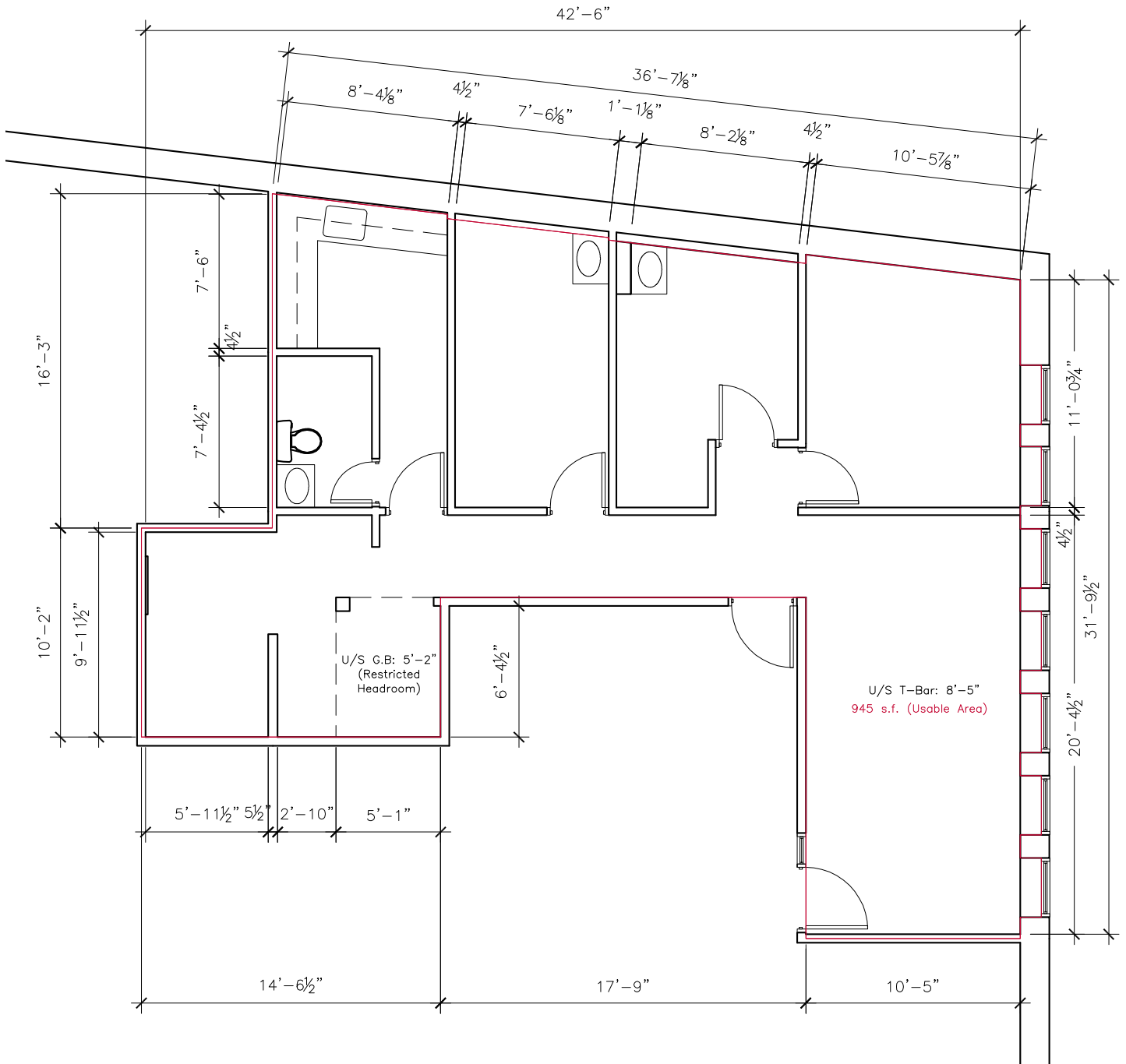
Rennie Zegalski

Principal
204.943.5700
rennie.zegalski@capitalgrp.ca



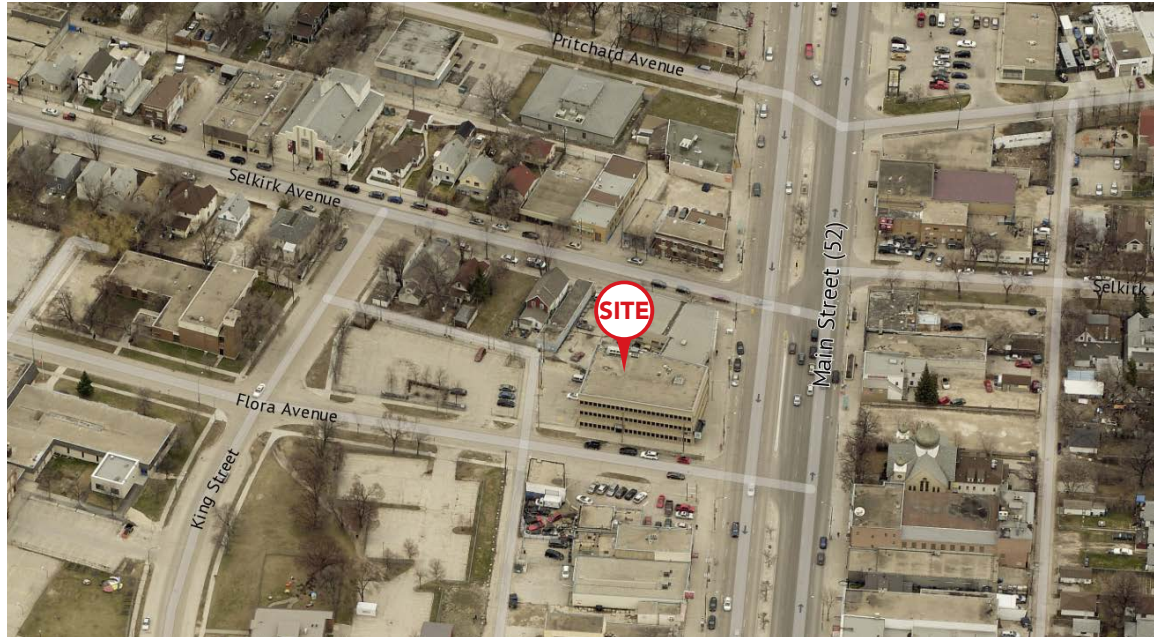
Capital
COMMERCIAL REAL ESTATE
SERVICES INC.

UNIT 201 FLOOR PLAN

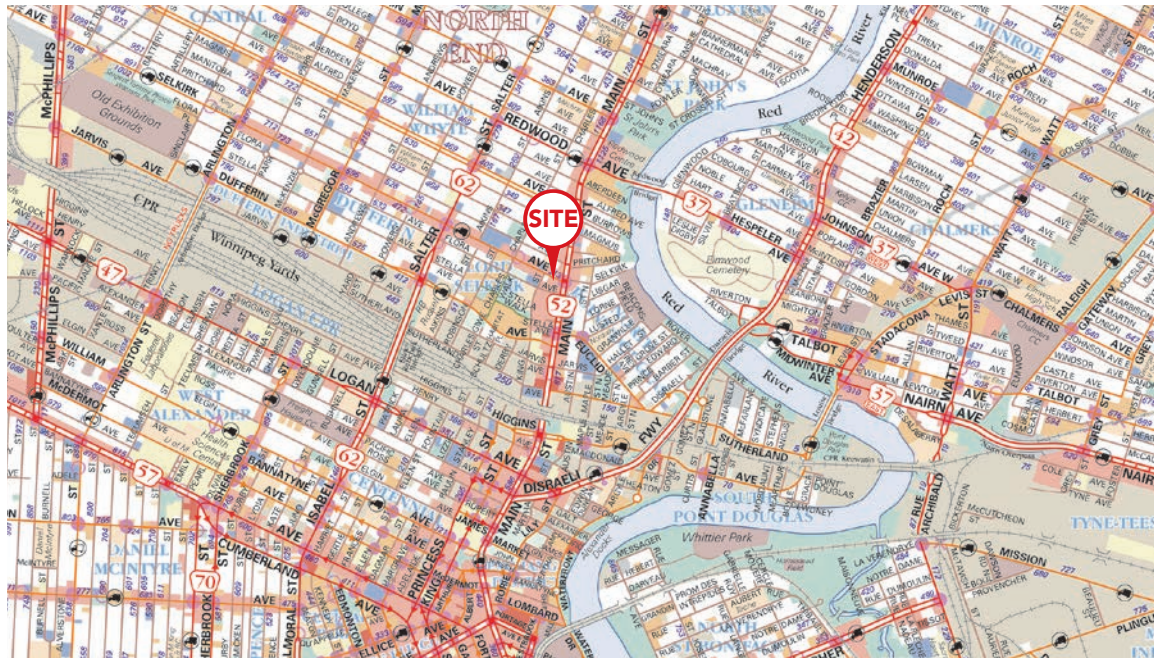


952 Main Street | Winnipeg, MB

AERIAL OVERVIEW



LOCATION MAP



For more information please contact:

Mario Posillipo

Senior Advisor - Sales & Leasing
204.943.5700
mario.posillipo@capitalgrp.ca

Rennie Zegalski

Principal
204.943.5700
rennie.zegalski@capitalgrp.ca



Disclaimer: Capital Commercial Real Estate Services Inc. ("Capital") does not accept or assume any responsibility or liability, direct or consequential, for the information set out herein, including, without limitation, any projections, images, opinions, assumptions and estimates obtained from third parties. This information has not been verified by Capital, and Capital does not guarantee the accuracy, correctness and completeness of this information. The recipient of this information should take such steps as the recipient may deem necessary to verify the information in this document prior to placing any reliance upon it. The information may change and any property described in this document may be withdrawn from the market at any time without notice or obligation to the recipient from Capital.