

For Lease | Freestanding Wholesale, Manufacturing, Showroom Building

4025 McConnell Drive

Burnaby, BC

8,675 SF to 22,462 SF Available in Burnaby's Winston Industrial Area



For more information, contact:

Darren Starek

Senior Vice President
Industrial Properties Group
604 662 5175
darren.starek@cbre.com

Ed Ferreira

Personal Real Estate Corporation
Senior Vice President
Industrial Properties Group
604 662 5122
ed.ferreira@cbre.com

Jordan Coulter

Senior Sales Associate
Industrial Properties Group
604 662 5574
jordan.coulter@cbre.com

CBRE

Property Details

Address
4025 McConnell Drive, Burnaby

Total Building Area (Approx.)

Main Floor Office/ Showroom	3,068 SF
Main Floor Warehouse	12,992 SF
2nd Floor Office	1,902 SF
2nd Floor Warehouse	4,500 SF
Total	22,462 SF

Zoning
M-5 (Light Industrial)

Taxes & Operating Costs
\$5.25 per SF (estimated)

Lot Size
0.803 acres or 34,979 SF (approx.)

Potential Demising Options

NORTH SECTION

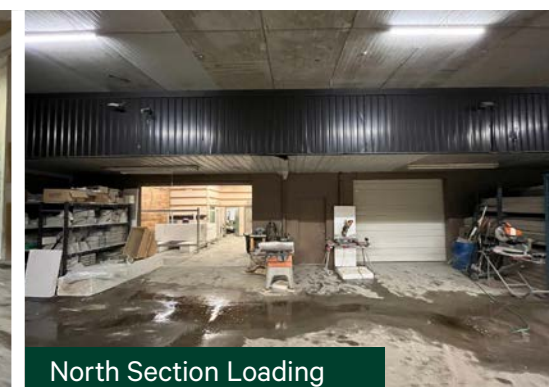
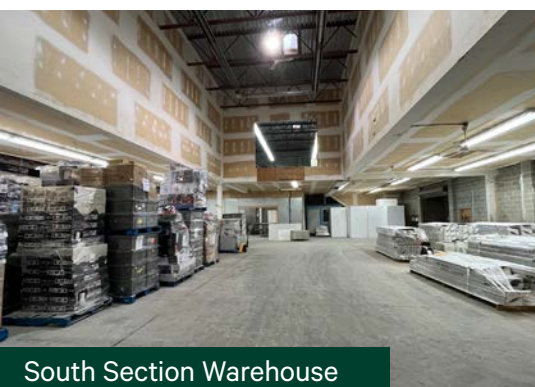
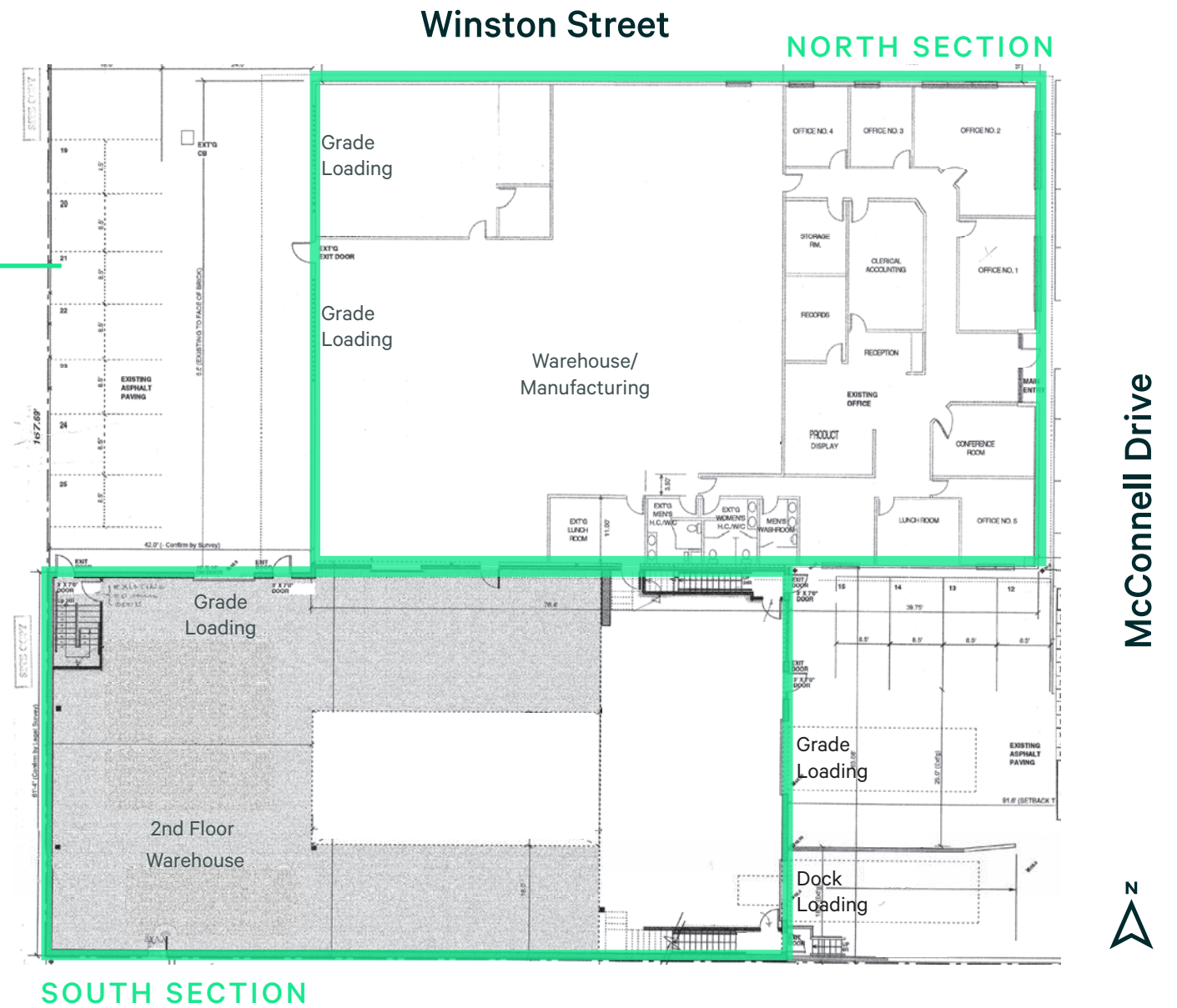
Office/Showroom	3,068 SF
Warehouse	5,607 SF
Total	8,675 SF

SOUTH SECTION

Main Floor Warehouse	7,385 SF
Second Floor Office Area	1,902 SF
Second Floor Warehouse	4,500 SF*
Total	13,787 SF

*potential to be reduced

Lease Rate
From \$18.00 per SF, triple net



Features

- + Ample parking providing 25 surface stalls
 - + Dock & Grade level loading
- NORTH SECTION**
- + 2 grade level loading doors
 - + 11' 6" ceiling heights
 - + Nicely improved office and showroom space
 - Mix of private offices, open plan and conference room
 - Two lunch rooms

- SOUTH SECTION**
- + 12' 4" to 24" ceiling heights
 - 10' 5" Mezzanine ceiling heights
 - + Dock and grade loading
 - + Separate entrance to finished second floor offices

For Lease | 4025 McConnell Drive, Burnaby

Drive Times

- + Production Way SkyTrain Station - **3 mins**
- + Lake City Way SkyTrain Station - **4 mins**
- + Lougheed Highway - **4 mins**
- + Tran-Canada Highway - **5 mins**
- + Lougheed City Centre - **8 mins**
- + The Amazing Brentwood - **10 mins**
- + Simon Fraser University - **11 mins**
- + British Columbia Institute of Technology - **12 mins**
- + Downtown Vancouver - **25 mins**
- + Vancouver International Airport - **40 mins**



4025 McConnell Drive is located within the bustling Winston industrial area of Burnaby. The area is home to a diverse mix of local and international tenants, such as Amazon, STEMCELL Technologies and Eagle Creek Studios. This convenient location provides easy access to Lougheed Highway a 3-minute drive, Lake City Way SkyTrain Station a 4-minute drive, and Trans-Canada Highway a 6-minute drive. The location provides quick and convenient access to major transportation routes.

For more information, contact:

Darren Starek

Senior Vice President
Industrial Properties Group
604 662 5175
darren.starek@cbre.com

Ed Ferreira

Personal Real Estate Corporation
Senior Vice President
Industrial Properties Group
604 662 5122
ed.ferreira@cbre.com

Jordan Coulter

Senior Sales Associate
Industrial Properties Group
604 662 5574
jordan.coulter@cbre.com

This disclaimer shall apply to CBRE Limited, Real Estate Brokerage, and to all other divisions of the Corporation; to include all employees and independent contractors ("CBRE"). The information set out herein, including, without limitation, any projections, images, opinions, assumptions and estimates obtained from third parties (the "Information") has not been verified by CBRE, and CBRE does not represent, warrant or guarantee the accuracy, correctness and completeness of the Information. CBRE does not accept or assume any responsibility or liability, direct or consequential, for the Information or the recipient's reliance upon the Information. The recipient of the Information should take such steps as the recipient may deem necessary to verify the Information prior to placing any reliance upon the Information. The Information may change and any property described in the Information may be withdrawn from the market at any time without notice or obligation to the recipient from CBRE. CBRE and the CBRE logo are the service marks of CBRE Limited and/or its affiliated or related companies in other countries. All other marks displayed on this document are the property of their respective owners. All Rights Reserved. Mapping Sources: Canadian Mapping Services canadamapping@cbre.com; DMTI Spatial, Environics Analytics, Microsoft Bing, Google Earth.

