



1331 Clyde Ave.
Ottawa, ON

*New 5 Floor Tower,
completed in 2013*

*4th Floor Area can be
subdivided*



LAURENTIAN PLACE, CLASS “A” OFFICE BUILDING

Property Highlights

- LEED® Silver Certification
- 2 level parking structure
- 5 min. to Highway 417 interchange
- Short bus hop to the new (under construction) LRT stop at Algonquin College

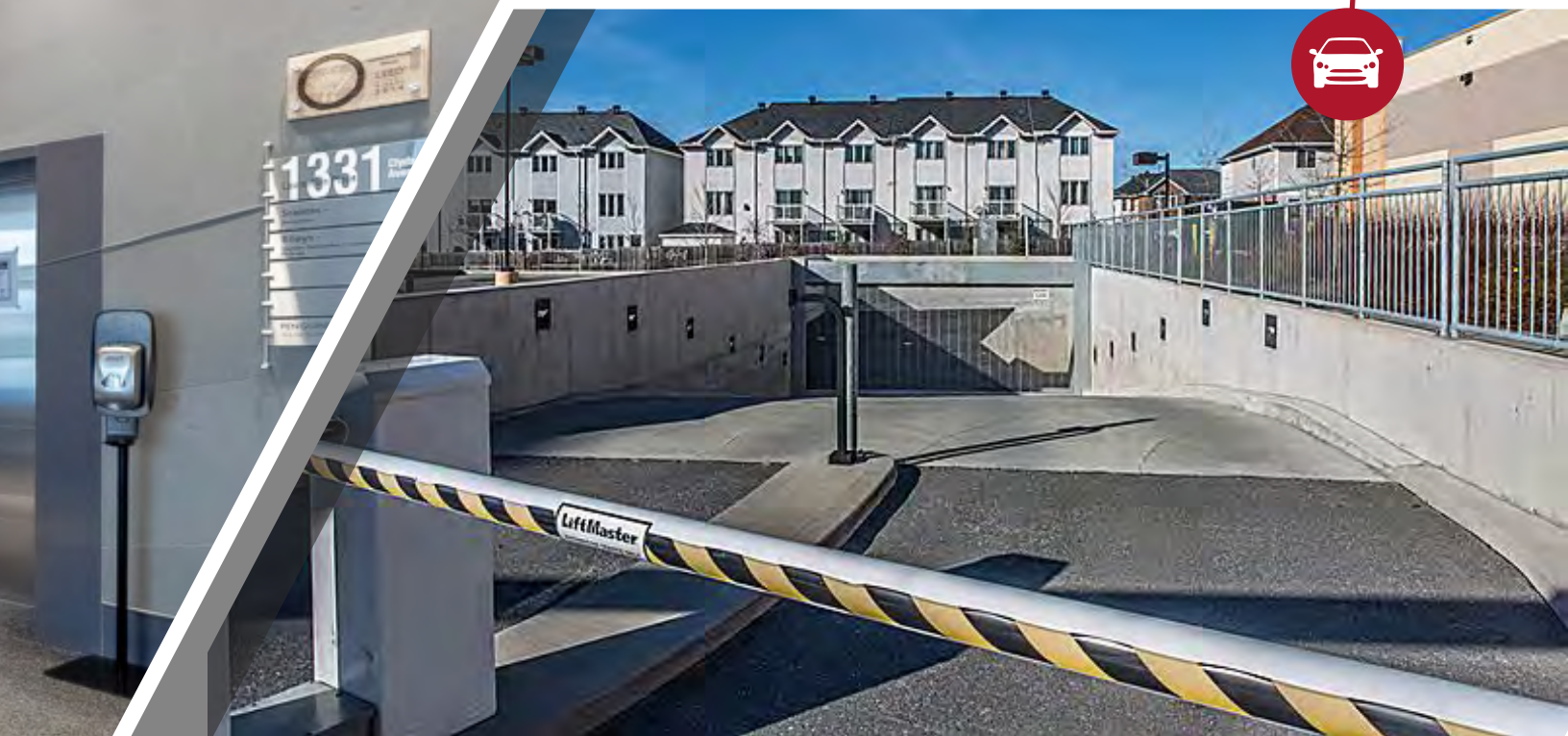
Building Amenities

- Shower facilities
- Secure bicycle storage
- St. Louis Bar & Grill • Thai Express • GNC Live Well • Meridian • CAA
- Secured parking garage, with card access, exclusive to building tenants





AMENITIES St. Louis Bar & Grill,
Thai Express & GNC Live Well





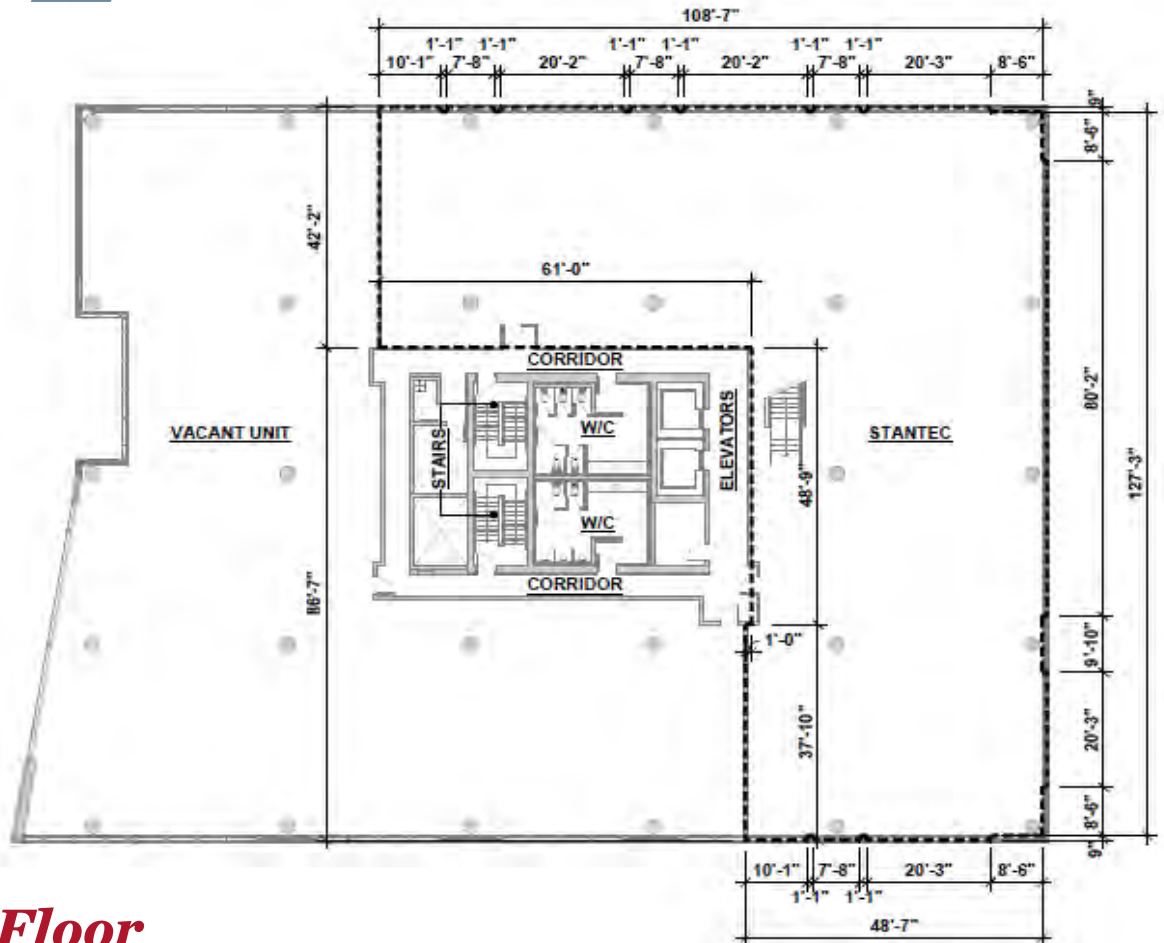
Open Concept Ready for Fit-Up, 2nd Floor



10

Chase

Floorplans



10,978.8 SF, 2nd Floor

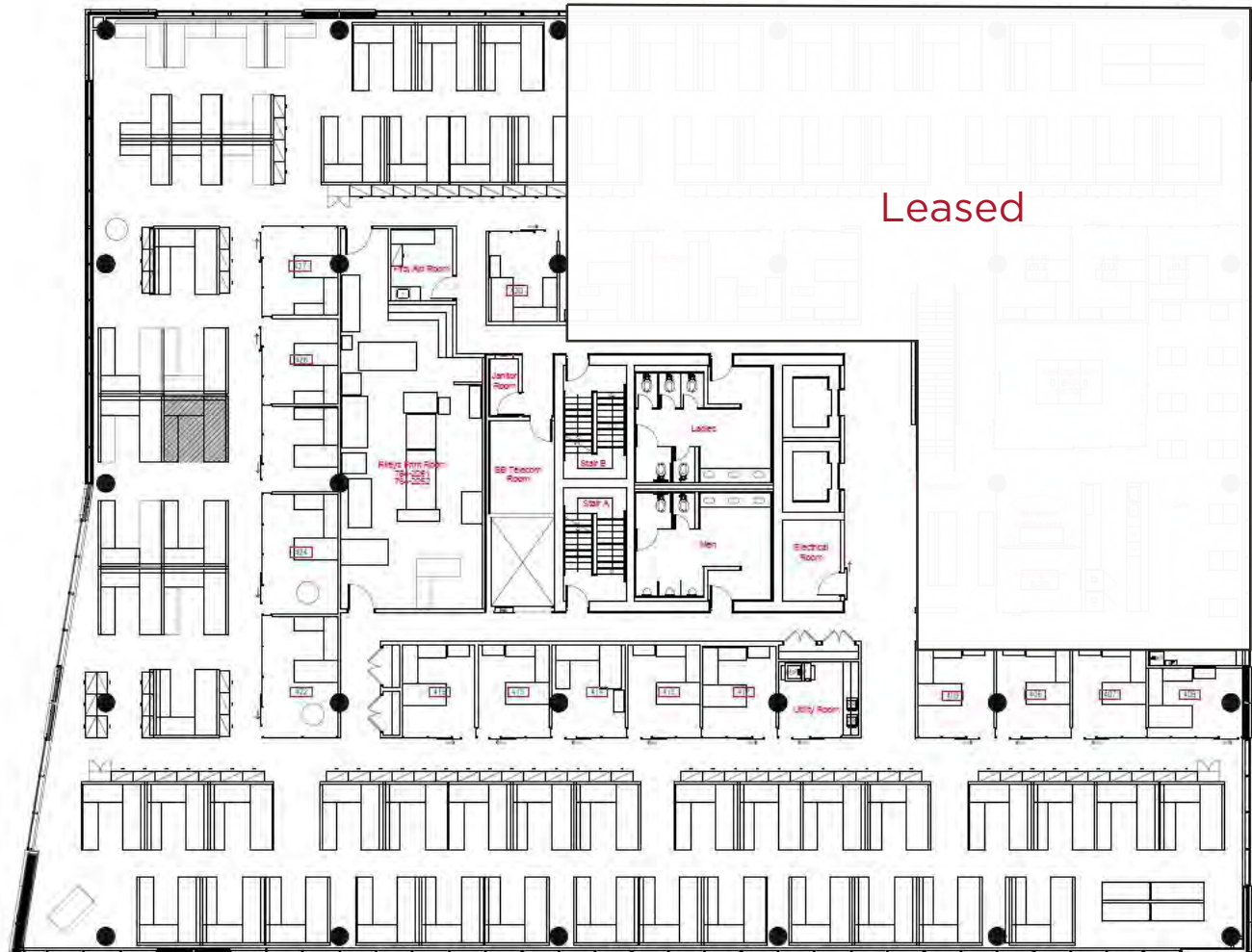


1331 Clyde Available Area

Floor		Area Available (RSF)
5 th	Leased	0
4 th	Leased	14,574 SF—Possession, Immediate
3 rd	Leased	0
2 nd	Leased	10,979 SF—Possession, Immediate
Ground		2,002 SF—Possession, 6-months

Total Office Area Available: 25,553 RSF + 2,002 RSF of Retail Space on the Ground Floor (6-months notice).

14,574 SF, 4th Floor

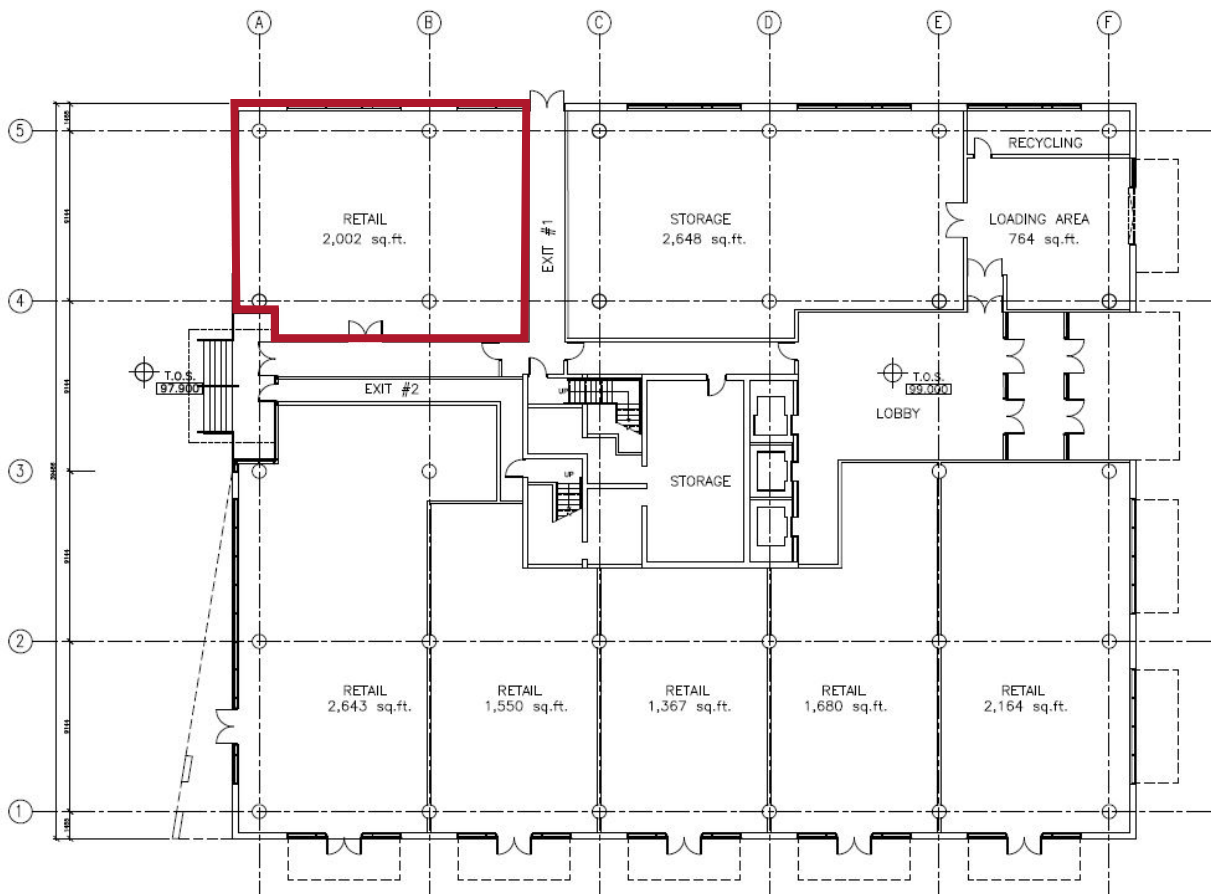


The furnishings depicted have been removed.

The plan illustrates the employment capacity of the space.



2,002 SF, Ground Floor



The depicted ground floor retail area of 2,002 RSF is available on 6 months prior notice.



Future
LRT Stop



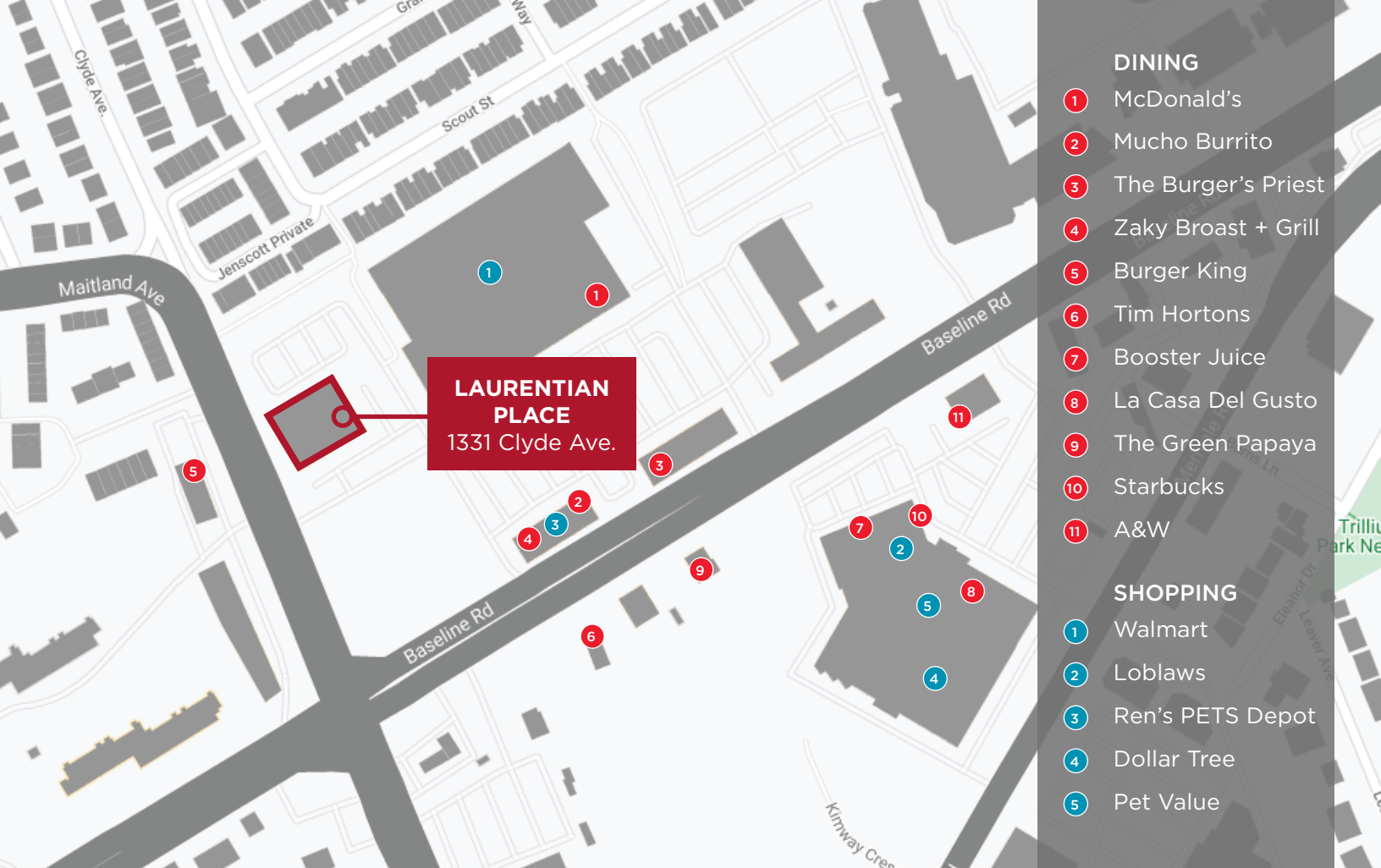
Algonquin
College Ottawa
Campus

2.7 KM

1.7 KM

QWY interchange at Maitland





DINING

- 1 McDonald's
- 2 Mucho Burrito
- 3 The Burger's Priest
- 4 Zaky Broast + Grill
- 5 Burger King
- 6 Tim Hortons
- 7 Booster Juice
- 8 La Casa Del Gusto
- 9 The Green Papaya
- 10 Starbucks
- 11 A&W

SHOPPING

- 1 Walmart
- 2 Loblaws
- 3 Ren's PETS Depot
- 4 Dollar Tree
- 5 Pet Value

*Located in the suburbs with
the walk-ability of a downtown
environment.*

For more information, please contact:

PAUL BENNETT
Senior Vice President / Broker
+1 613 780 1590
pbennett@cwottawa.com



Brokerage, Independently Owned & Operated / A Member of the Cushman & Wakefield Alliance

©2023 Cushman & Wakefield Ottawa. All rights reserved. The information contained in this communication is strictly confidential. This information has been obtained from sources believed to be reliable but has not been verified. NO WARRANTY OR REPRESENTATION, EXPRESS OR IMPLIED, IS MADE AS TO THE CONDITION OF THE PROPERTY (OR PROPERTIES) REFERENCED HEREIN OR AS TO THE ACCURACY OR COMPLETENESS OF THE INFORMATION CONTAINED HEREIN, AND SAME IS SUBMITTED SUBJECT TO ERRORS, OMISSIONS, CHANGE OF PRICE, RENTAL OR OTHER CONDITIONS, WITHDRAWAL WITHOUT NOTICE, AND TO ANY SPECIAL LISTING CONDITIONS IMPOSED BY THE PROPERTY OWNER(S). ANY PROJECTIONS, OPINIONS OR ESTIMATES ARE SUBJECT TO UNCERTAINTY AND DO NOT SIGNIFY CURRENT OR FUTURE PROPERTY PERFORMANCE.