

FOR LEASE | OFFICE/INDUSTRIAL  
**203 WEST 6TH AVENUE**  
VANCOUVER, BC

**LEE &  
ASSOCIATES**  
COMMERCIAL REAL ESTATE SERVICES



- ▶ **3,772 SF Second Floor Office/Production Space**
- ▶ **High Profile Corner Building in Mount Pleasant**

### Location

203 West 6th is located on the northwest corner of 6th Avenue and Columbia Street, just a few blocks east of Cambie Street. This office building offers quick and easy access to both transit and local amenities. Perfect for engineering firms, tech companies, post production, architects looking for funky unique second floor production/office space.

#### Mitch Ellis

D 604.630.3383 C 604.729.7699  
mitch.ellis@lee-associates.com

#### Ryan Saunders

Personal Real Estate Corporation  
D 604.630.3384 C 604.760.8799  
ryan.saunders@lee-associates.com

FOR LEASE | OFFICE/INDUSTRIAL  
203 WEST 6TH AVENUE  
VANCOUVER, BC

**Available Area**

3,772 SF (approximate)

All measurements are approximate and must be verified by the tenant.

**Zoning**

I-1 (Light Industrial) allows a wide range of wholesale/showroom/ ancillary retail use, software manufacturing, video and film production and an expanded range of general office use.

**Features**

- ▶ Open and private office areas
- ▶ Abundant natural light
- ▶ Signage opportunity
- ▶ Walking distance to transit
- ▶ Private entrance
- ▶ High ceilings
- ▶ On-site parking available
- ▶ Air-conditioned offices
- ▶ Large kitchen area
- ▶ Reception area

**Basic Lease Rate**

\$23.00 PSF

**Additional Rent**

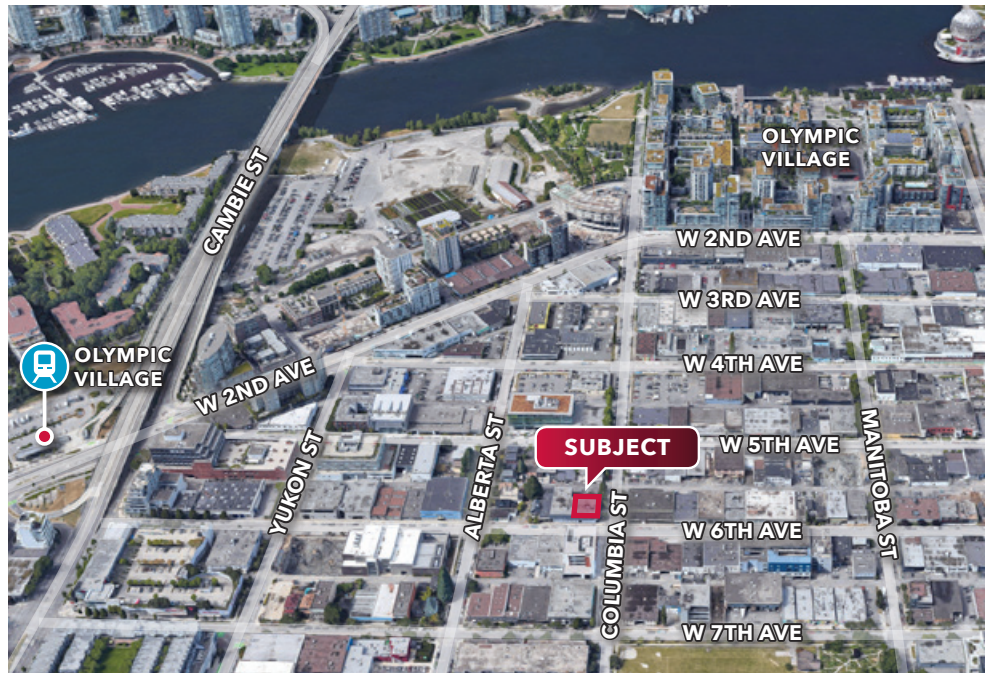
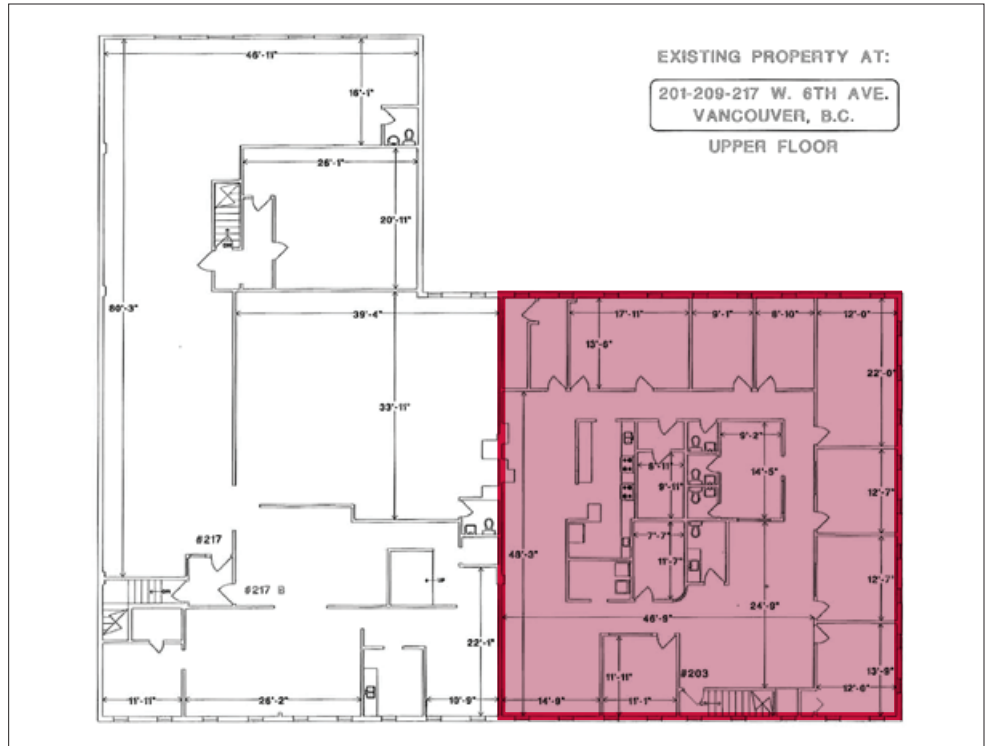
\$11.00 PSF (2024 estimate)

**Lease Term**

3 to 5 years or longer

**Availability**

June 2024



**Mitch Ellis**

D 604.630.3383 C 604.729.7699  
mitch.ellis@lee-associates.com

**Ryan Saunders**

Personal Real Estate Corporation  
D 604.630.3384 C 604.760.8799  
ryan.saunders@lee-associates.com