

628 SIXTH AVENUE, NEW WESTMINSTER
OFFICE SPACES AT ROYAL BANK BUILDING

**FOR
LEASE**



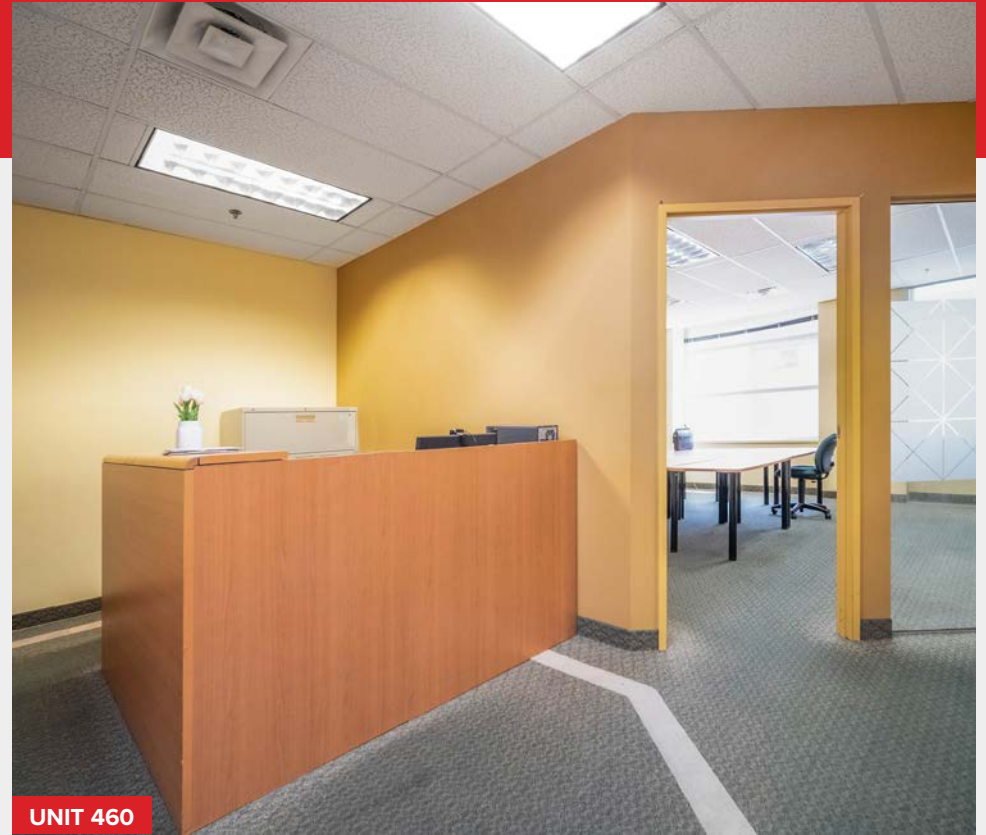
WILLIAM | WRIGHT

Commercial Real Estate Services

NATHAN ARMOUR
PERSONAL REAL ESTATE CORPORATION
nathan@williamwright.ca
604.545.0636



UNIT 410



UNIT 460

628 Sixth Avenue



Centrally located on the corner of Sixth Avenue and Seventh Street



Card access security



Secured underground parking



Adjacent to Royal City Centre mall

Units Available

Unit	Leasable Area	Basic Rent	Add. Rent	Monthly Rent
410	± 1,930 SF	\$25.50/FT	\$18.23/FT	\$7,033.24 + GST
460	± 1,888 SF	\$25.50/FT	\$18.23/FT	\$6,880.00 + GST

Parking	Zoning
2/unit	C-3

UNIT 410



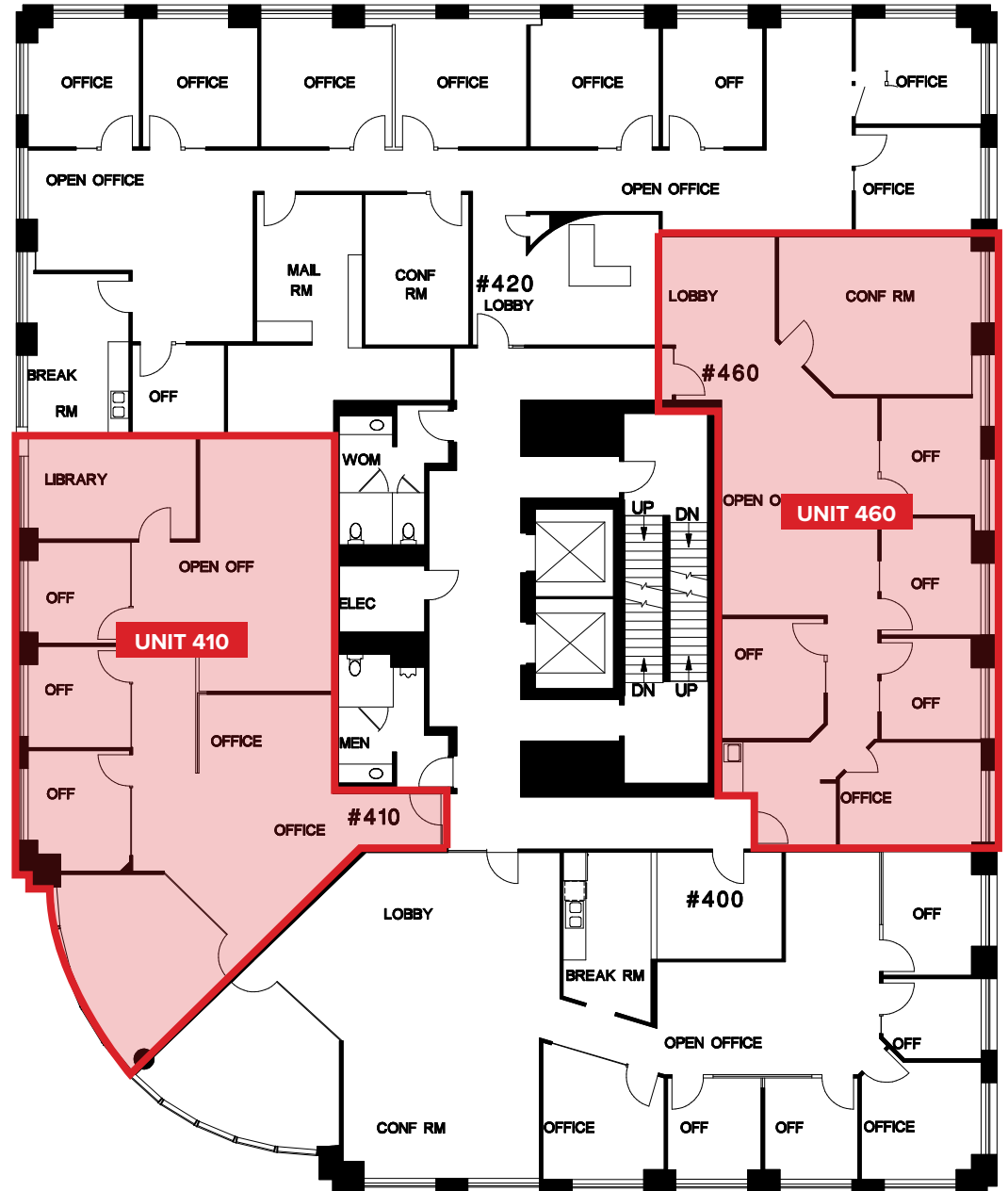
Office spaces for your business

The Royal Bank Building is centrally located at the corner of Sixth Avenue and Seventh Street in Uptown New Westminster. This "A" class office building features card access security, surface and underground parking, and fiber optic capability. It enjoys close proximity to major bus routes with direct links to Skytrain stations, as well as being across the street from Royal City Centre mall.

UNIT 460



Floorplan





Uptown New Westminster

Uptown New Westminster, located in British Columbia, is a vibrant urban center with a rich history and a thriving business community. With its historic architecture, diverse selection of shops and restaurants, and proximity to parks and the Fraser River, Uptown offers a unique blend of charm and recreational opportunities. The area is well-connected to transportation networks, with major bus routes and direct links to Skytrain stations, providing easy access to the region.



For More Information Contact

NATHAN ARMOUR
 PERSONAL REAL ESTATE CORPORATION
 nathan@williamwright.ca
 604.545.0636