

1515 Matheson Boulevard E Mississauga, ON

For Lease: Office



Available Space

Suite 213: 3,954 SF



Net Rent

\$10.25 PSF

Additional Rent

\$9.25 PSF (2023 est.)



Availability

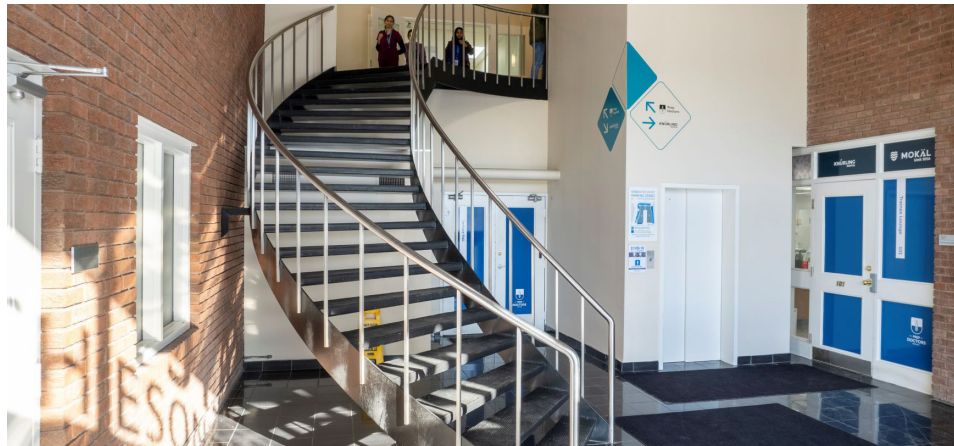
Immediate

Property Highlights

- Easy access to all the major highways and roadways
- Serviced by Mississauga transit
- Restaurants and amenities within walking distance
- Exceptional hands on Landlord
- Outdoor parking available at no charge
- Signage can be made available
- Corner suite with 6 large private offices on glass, meeting room, kitchen, open area and reception area.
- Tenant pays for own interior janitorial

Joni Blanshard*, Vice President
905.247.9231 • jblanshard@lennard.com

*Sales Representative

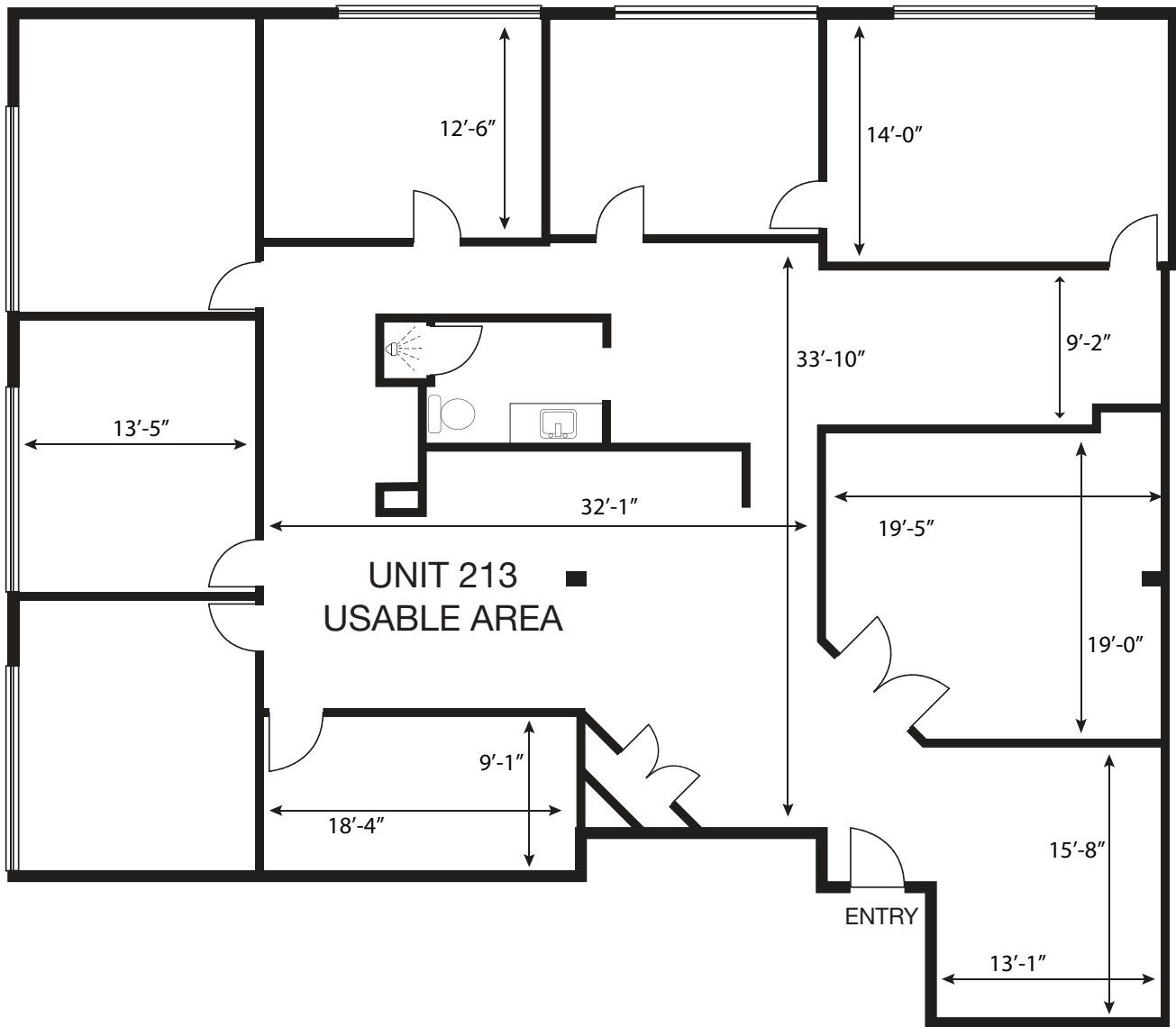


Floor Plan

Suite 213 | 3,954 SF

1515

Matheson
Boulevard E
Mississauga, ON



Lennard:

Lennard Commercial Realty, Brokerage
602-350 Burnhamthorpe Road W
905.625.5020 • lennard.com

Joni Blanshard*, Vice President
905.247.9231 • jblanshard@lennard.com

*Sales Representative. Statements and information contained are based on the information furnished by principals and sources which we deem reliable but for which we can assume no responsibility. Property outlines are approximate.
Lennard Commercial Realty, Brokerage.