

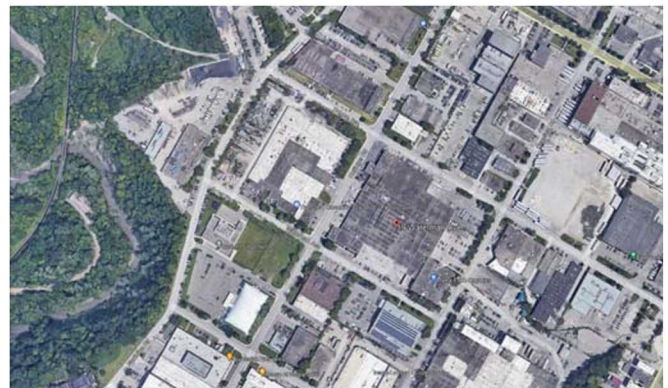
19 WATERMAN AVENUE Suite 28 FOR LEASE



PROPERTY SUMMARY

Rent: \$14.00 SF
Additional Rent: \$ 5.95 SF

- Attractive Lease Rate
- 2384 SF
- Great Warden + O'Connor Location
- Main Floor Office with Warehouse Space
- Close to TTC and Major Highways
- 2 Reserved Parking Spaces Included
- 3 Offices, 1 Large Open Area and
- Two 300 SF Warehouse Areas
- Bathroom In Suite, Sink in Warehouse Area

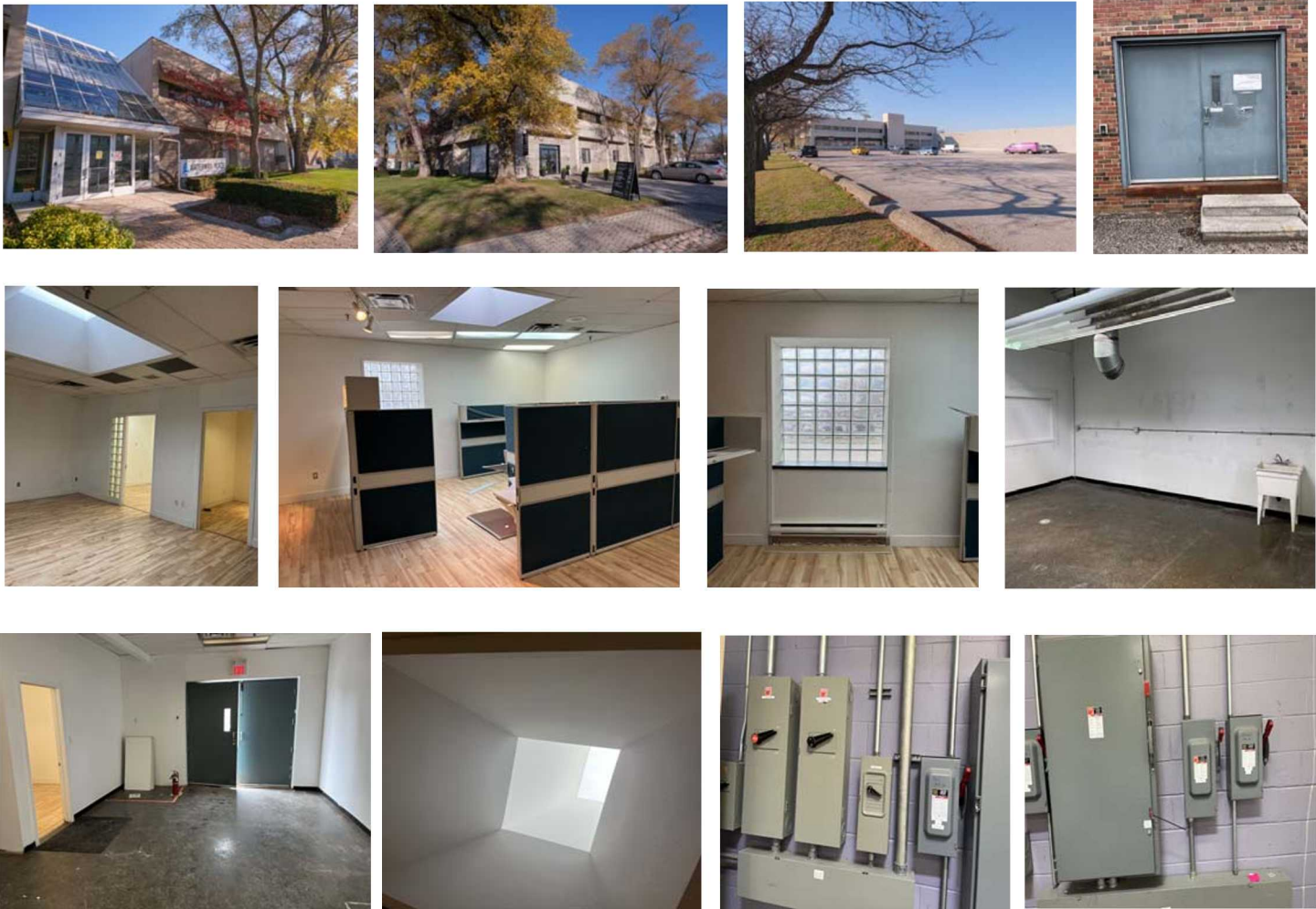


This information has been obtained from sources believed reliable. We have not verified it and make no guarantee, warranty or representation about it. Any projections, opinions, assumptions or estimates used are for example only and do not represent the current or future performance of the property. You and your advisers should conduct a careful, independent investigation of the property to determine to your satisfaction the suitability of the property for your needs.

Sean F. Boyle, Broker
President
416-817-8962
sboyle@boylecommercial.com

BOYLE Commercial
292 York Mills Road
Toronto, ON M2L 1L1
BOYLEcommercial.com

PHOTOS



This information has been obtained from sources believed reliable. We have not verified it and make no guarantee, warranty or representation about it. Any projections, opinions, assumptions or estimates used are for example only and do not represent the current or future performance of the property. You and your advisers should conduct a careful, independent investigation of the property to determine to your satisfaction the suitability of the property for your needs.



19 WATERMAN AVENUE

Suite 28

FOR LEASE

Sean F. Boyle, Broker
President
416-817-8962
sboyle@boylecommercial.com

BOYLE Commercial
292 York Mills Road
Toronto, ON M2L 1L1
BOYLEcommercial.com