

**FOR LEASE**

# The Rice Centre

491 PORTAGE AVENUE, WINNIPEG, MB

*~ Developed Office Space For Lease ~*



## CONTACT

BRETT CHARTIER, Associated Vice President, Sales & Leasing  
(204) 985-1366

[brett.chartier@capitalgrp.ca](mailto:brett.chartier@capitalgrp.ca)

Services provided by Brett Chartier Personal Real Estate Corporation

DILPREET MATHAUDA, Senior Advisor - Sales & Leasing  
(204) 985-1367

[dilpreet.mathauda@capitalgrp.ca](mailto:dilpreet.mathauda@capitalgrp.ca)

[capitalgrp.ca](http://capitalgrp.ca)

# The Rice Centre



## PROPERTY DETAILS

**BUILDING TYPE** Office with Main Floor Retail

---

**BUILDING AREA (+/-)** 140,000 sq. ft.

---

**NUMBER OF FLOORS** 9

---

**PARKING** 383-stall attached parkade

---

**SECURITY** The Rice Centre provides manned security post located in the main floor of the office tower Monday-Friday 8:00am-5:30pm. Consistent patrols of the common areas and parkade are made throughout security hours.

---

**MECHANICAL** 21 heating and cooling zones per floor by way of dual system, 12 additional zones of perimeter heating. HVAC system is controlled by a direct digital control system with pneumatic zone control

---

**RAPID TRANSIT** Building attached to the Balmoral Rapid Transit Hub Station

---

**PROPERTY MANAGEMENT** Capital Property Management Inc.

---

**AVAILABILITY** Immediately

---

## AVAILABILITY DETAILS

**3RD FLOOR** 8,830 sq. ft.  
**4TH FLOOR** 8,785 sq. ft. (direct access to parkade)  
**TOTAL CONTIGUOUS SPACE** 17,615 sq. ft.

---

**ASKING NET RENTAL RATE** Starting at \$12.00 per sq. ft.

---

**ADDITIONAL RENT** \$11.57 per sq. ft. (est. 2024) (plus mgmt fee of 5% of gross rent)

---

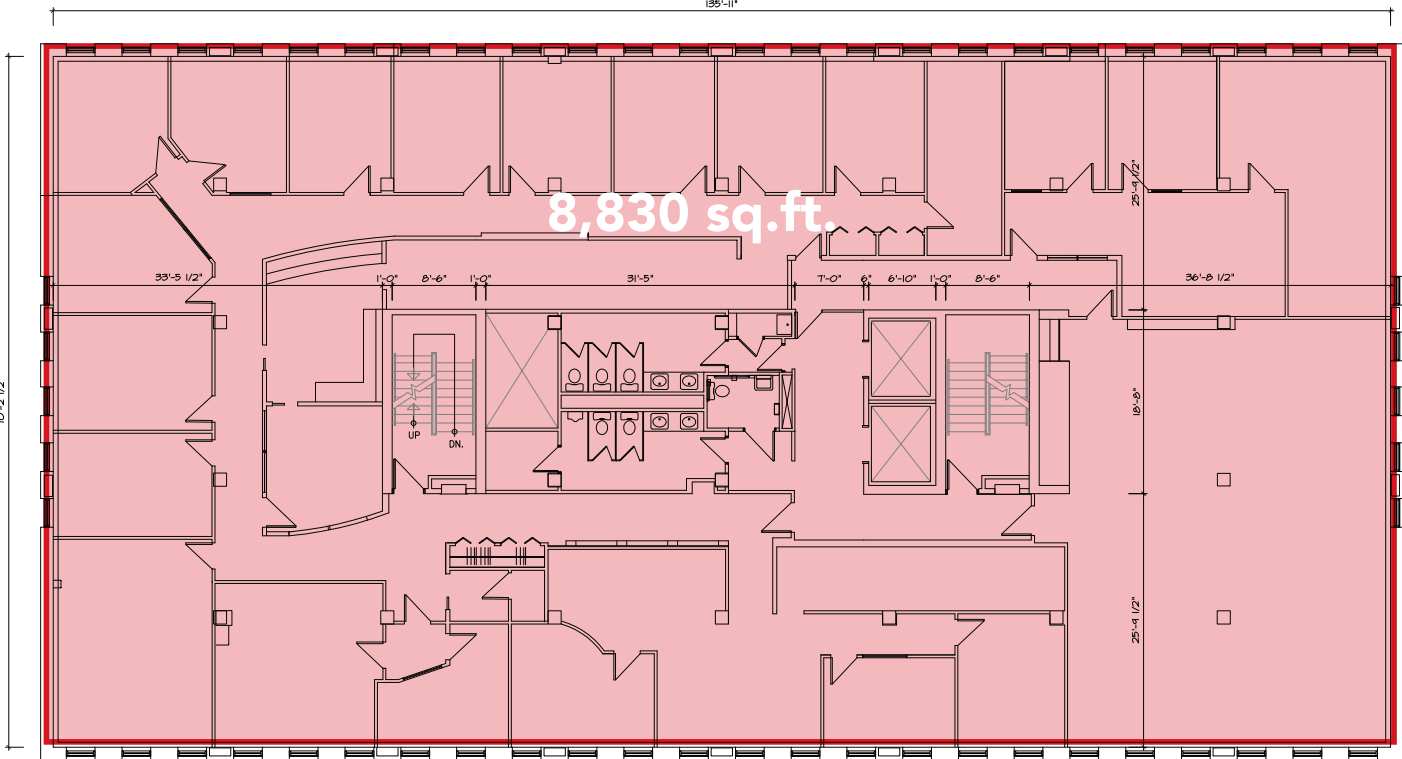
## PROPERTY HIGHLIGHTS

- Fully developed office space
- Fourth floor - direct access to attached parkade
- Excellent access to public transportation

# The Rice Centre



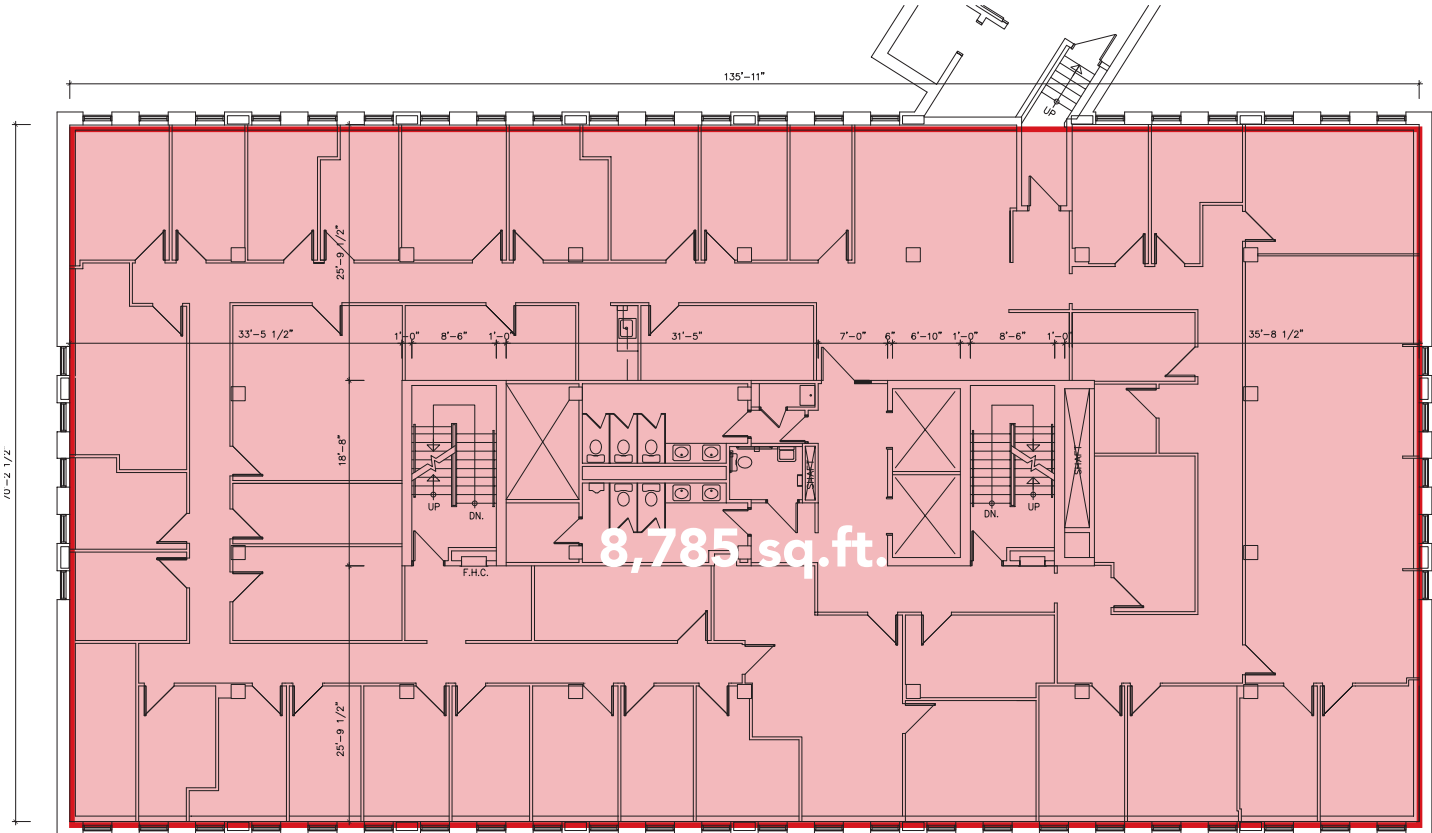
## 3RD FLOOR PLAN



# The Rice Centre

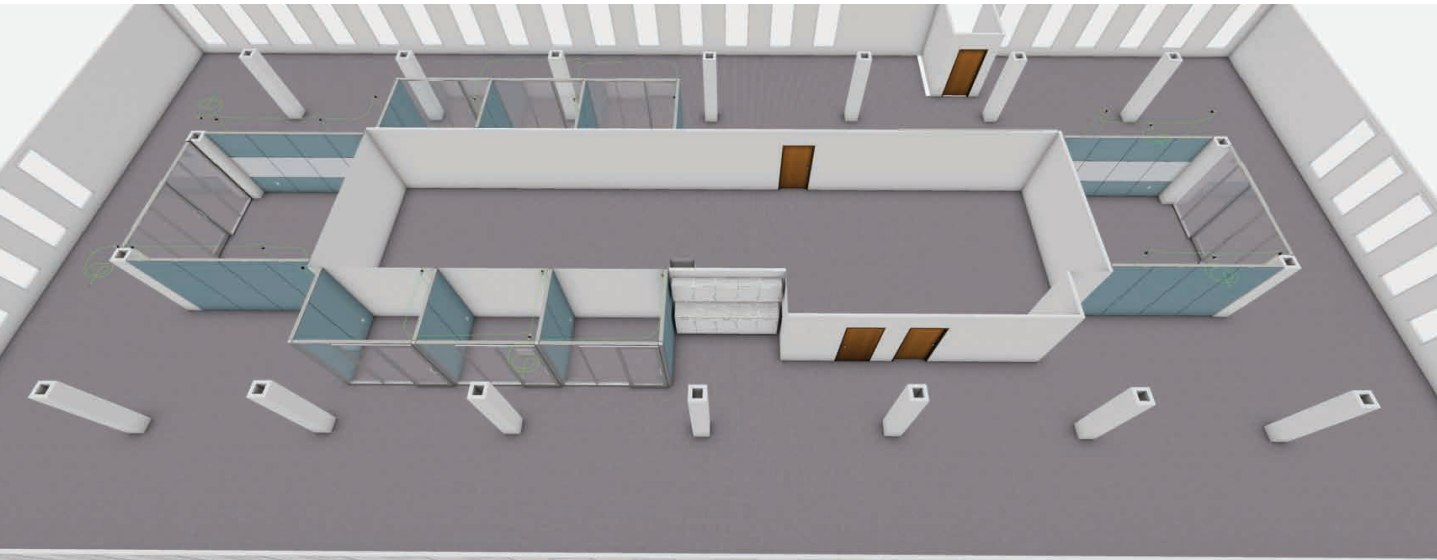


## 4TH FLOOR PLAN

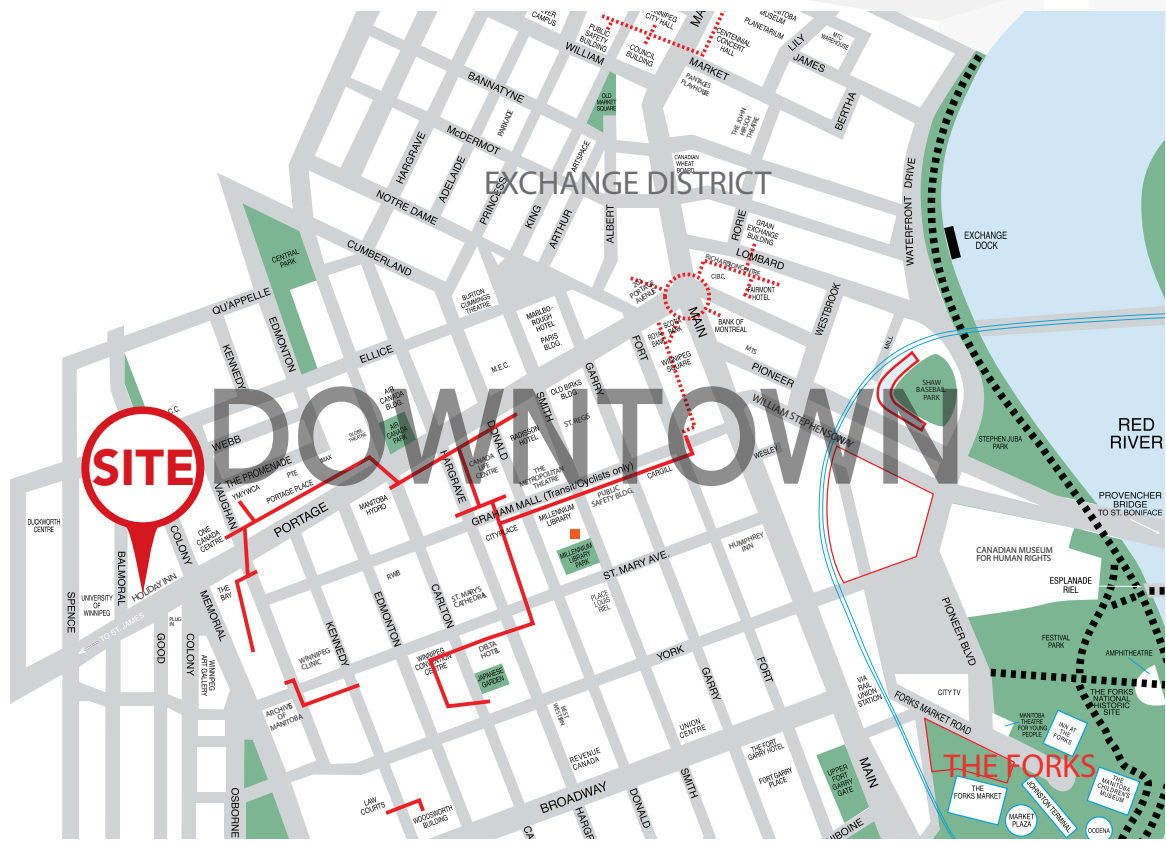


# The Rice Centre

## CONCEPT DRAWINGS



# The Rice Centre



**THE RICE CENTRE**

The Exchange District

Centrepont Building

Manitoba Hydro Building

Portage & Main

Canada Life Centre

True North Square

RBC Winnipeg Convention Centre

Capital is pleased to offer up to 8,785 sq. ft. (+/-) of fully developed downtown office space. This well-situated 9-storey office tower provides elevator access, excellent access to public transportation, and an attached parkade. Various unit sizes are available at competitive rental rates with the potential to offer a large block of contiguous space if required.



Rice  
Centre

## Contact

BRETT CHARTIER, Associate Vice President, Sales & Leasing

(204) 985-1366

[brett.chartieri@capitalgrp.ca](mailto:brett.chartieri@capitalgrp.ca)

*Services provided by Brett Chartier Personal Real Estate Corporation*

DILPREET MATHUADA, Senior Advisor, Sales & Leasing

(204) 985-1367

[dilpreet.mathuada@capitalgrp.ca](mailto:dilpreet.mathuada@capitalgrp.ca)

THE UNIVERSITY OF  
WINNIPEG

CAPITAL COMMERCIAL REAL ESTATE SERVICES INC.

300-570 Portage Avenue, Winnipeg, MB R3C 0G4 | T (204) 943-5700 | F (204) 956-2783 | [capitalgrp.ca](http://capitalgrp.ca)

Disclaimer: Capital Commercial Real Estate Services Inc. ("Capital") does not accept or assume any responsibility or liability, direct or consequential, for the information set out herein, including, without limitation, any projections, images, opinions, assumptions and estimates obtained from third parties. This information has not been verified by Capital, and Capital does not guarantee the accuracy, correctness and completeness of this information. The recipient of this information should take such steps as the recipient may deem necessary to verify the information in this document prior to placing any reliance upon it. The information may change and any property described in this document may be withdrawn from the market at any time without notice or obligation to the recipient from Capital.