

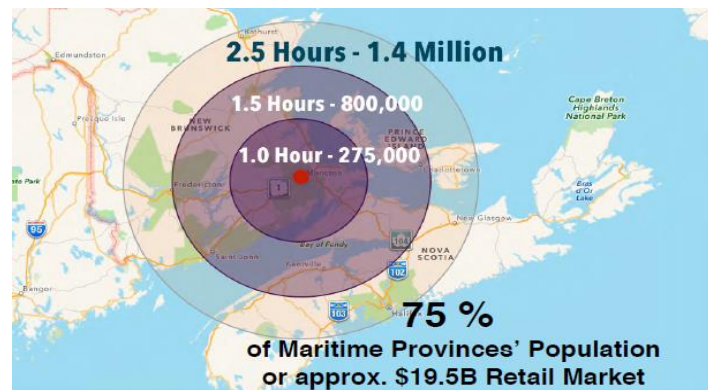
PHENOMENAL RETAIL OPPORTUNITY



	UNIT 12	UNIT 17
Area	4,951 sf	5,780 sf
Net Rent	CAM & Taxes	Utilities
\$22.00 psf Net	\$11.10 psf	Metered

## Property Highlights

- Wheeler Park Power Centre is one of the strongest retail nodes in the Greater Moncton region. It is located minutes from the TCH and Wheeler Blvd and major intersections at Trinity Drive, Mountain Road and Mapleton Rd
- Located near major retailers including Costco, Pier1, Pennington's, The Shoe Company, HomeSense, Bouclair, Superstore, Mark's, Hallmark, Dollorama
- All units feature modern, sprinklered, wide open space ready for new tenant
- Impressive frontage ranging from 30' to 39' with 23' ceiling
- 4 access points with good ingress and egress and ample on site parking
- Destination retail complex with great high traffic visibility



For more information, please contact:

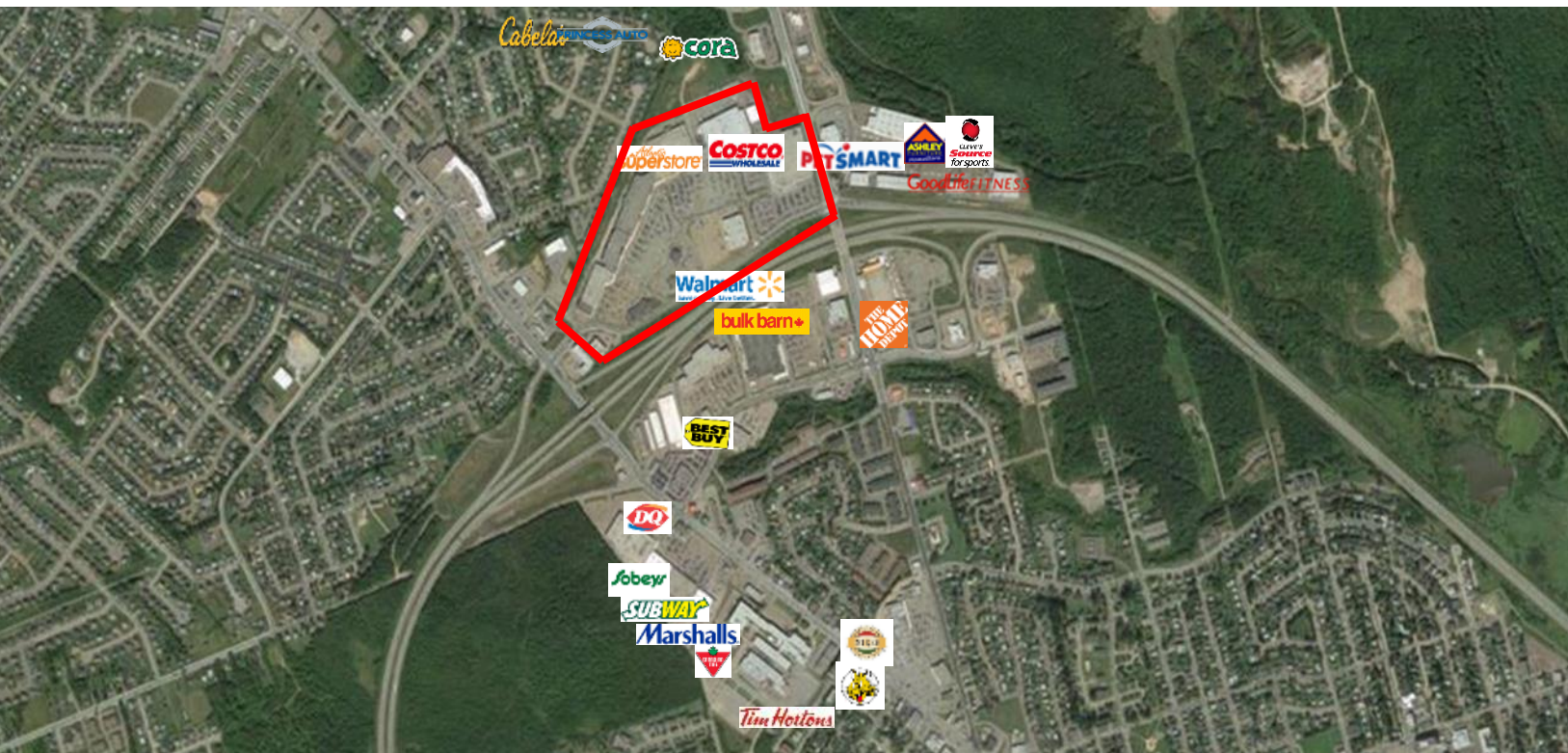
**Ian Franklin**  
Commercial Sales & Leasing  
(506) 387 6920 Direct  
[ifranklin@cwatlantic.com](mailto:ifranklin@cwatlantic.com)

**Donna Green**  
Commercial Sales & Leasing  
(506) 387 6930 Direct  
[dgreen@cwatlantic.com](mailto:dgreen@cwatlantic.com)

**Julie Martineau**  
Commercial Sales & Leasing  
(514) 841 3828 Direct  
[Julie.Martineau@ca.cushwake.com](mailto:Julie.Martineau@ca.cushwake.com)

**Cushman & Wakefield Atlantic**  
32 Alma Street  
Moncton, NB E1C 4Y1  
Phone: 506 387 6925





For more information, please contact:

**Ian Franklin**  
Commercial Sales & Leasing  
(506) 387 6920 Direct  
[ifranklin@cwatlantic.com](mailto:ifranklin@cwatlantic.com)

**Donna Green**  
Commercial Sales & Leasing  
(506) 387 6930 Direct  
[dgreen@cwatlantic.com](mailto:dgreen@cwatlantic.com)

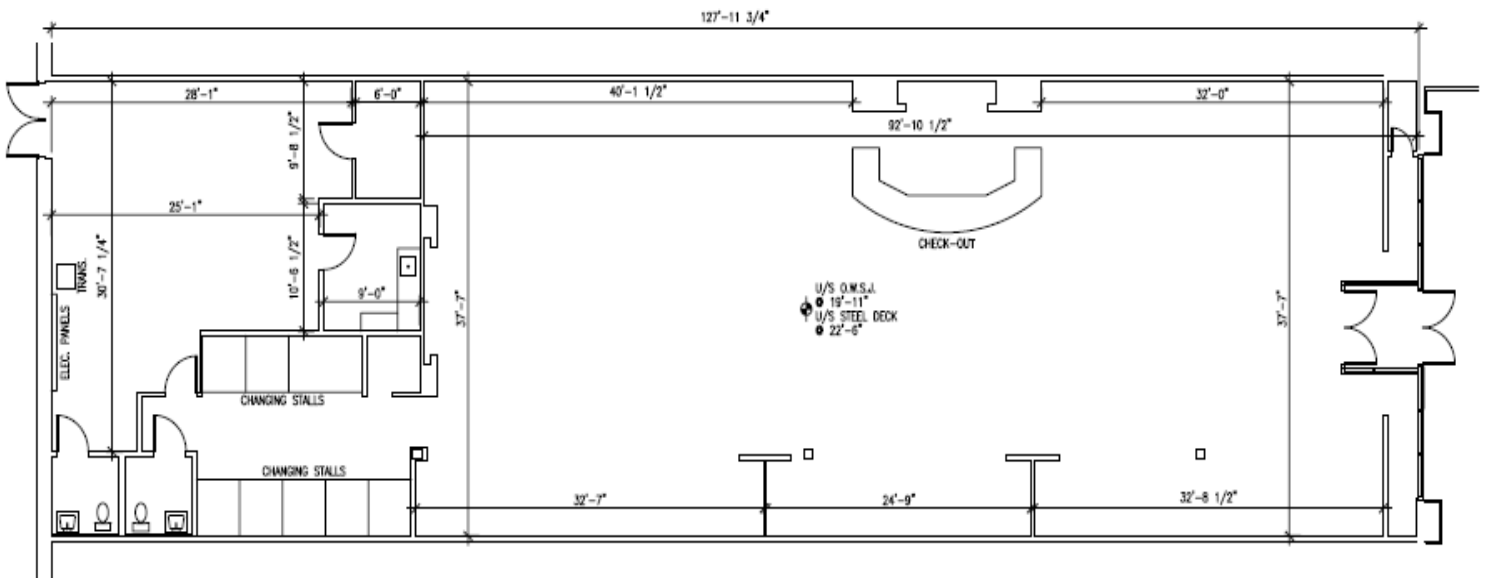
**Julie Martineau**  
Commercial Sales & Leasing  
(514) 841 3828 Direct  
[Julie.Martineau@ca.cushwake.com](mailto:Julie.Martineau@ca.cushwake.com)

**Cushman & Wakefield Atlantic**  
32 Alma Street  
Moncton, NB E1C 4Y1  
Phone: 506 387 6925





**Unit 12**  
4,951 sf Available, 30' frontage, 23' ceiling



For more information, please contact:

**Ian Franklin**  
Commercial Sales & Leasing  
(506) 387 6920 Direct  
[ifranklin@cwatlantic.com](mailto:ifranklin@cwatlantic.com)

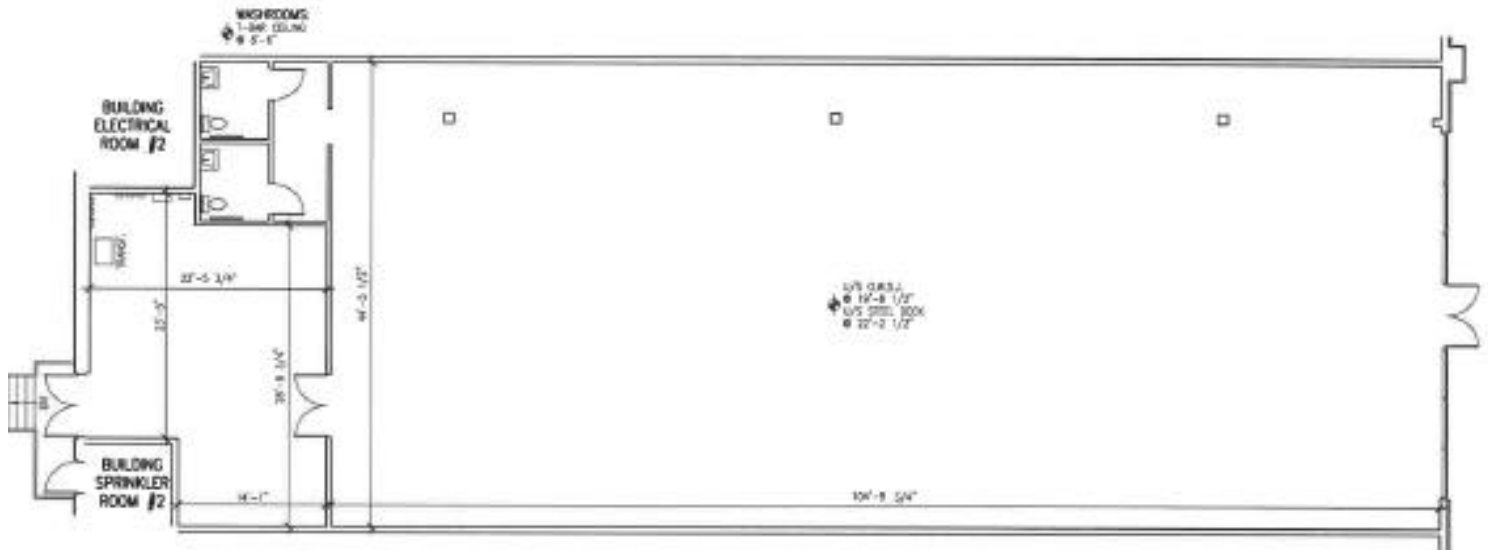
**Donna Green**  
Commercial Sales & Leasing  
(506) 387 6930 Direct  
[dgreen@cwatlantic.com](mailto:dgreen@cwatlantic.com)

**Julie Martineau**  
Commercial Sales & Leasing  
(514) 841 3828 Direct  
[Julie.Martineau@ca.cushwake.com](mailto:Julie.Martineau@ca.cushwake.com)

**Cushman & Wakefield Atlantic**  
32 Alma Street  
Moncton, NB E1C 4Y1  
Phone: 506 387 6925



**Unit 17**  
5,780 sf Available, 34' frontage, 23' ceiling



For more information, please contact:

**Ian Franklin**  
Commercial Sales & Leasing  
(506) 387 6920 Direct  
[ifranklin@cwatlantic.com](mailto:ifranklin@cwatlantic.com)

**Donna Green**  
Commercial Sales & Leasing  
(506) 387 6930 Direct  
[dgreen@cwatlantic.com](mailto:dgreen@cwatlantic.com)

**Julie Martineau**  
Commercial Sales & Leasing  
(514) 841 3828 Direct  
[Julie.Martineau@ca.cushwake.com](mailto:Julie.Martineau@ca.cushwake.com)

**Cushman & Wakefield Atlantic**  
32 Alma Street  
Moncton, NB E1C 4Y1  
Phone: 506 387 6925