



Starting at  
**\$16.00**  
PSF

**WAYNE SATO**

WAYNE SATO PERSONAL REAL ESTATE CORPORATION

Sales and Leasing Executive

c. 204-510-3311

o. 204-957-0500

[wayne@waynesato.ca](mailto:wayne@waynesato.ca)

[www.waynesato.ca](http://www.waynesato.ca)

**FOR LEASE | 1780 WELLINGTON AVENUE**

## Step up to business class at Airport Executive Centre

Office and retail space for lease in the center of the St. James business region. Airport Executive Centre is the premier office/hotel development in the northwest. Convenient location on the corner of Wellington Avenue and King Edward Street, at the gateway to James Armstrong Richardson International Airport. This mixed-use development affords businesses an array of amenities not found in other locations, such as meeting room and conference facilities, upscale restaurant, and the Hilton Hotel.



Scan QR code to  
view website

**RE/MAX  
PROFESSIONALS**

1601 Buffalo Place  
Winnipeg, MB R3T 3K7  
o. 204-957-0500  
f. 204-452-4359  
[wpgproperty.ca](http://wpgproperty.ca)

**RE/MAX**  
COMMERCIAL

# Property Highlights



- Signature location at Wellington and King Edward welcomes domestic and international visitors to Winnipeg
- Wellington and King Edward location provides easy access to all staff and guests, and fantastic exposure to 25,100 cars passing per day
- Caters to businesses demanding well-appointed office environments
- Main floor mall connection to Hilton Hotel, with 159 guest rooms, for ultimate convenience
- Oak and Grain restaurant featuring comfort food with a twist and a wide selection of local brews
- Host meetings or events for 25 – 400 guests with event catering options

## OFFICE SPACE

Net Rent: \$16.00 psf  
CAM & Tax: \$14.75 (2022 est.)

## RETAIL SPACE

Net Rent: Starting at \$20.00 psf  
CAM & Tax: \$14.75 (2022 est.)

# Available Units

## OFFICE SPACE

| Suite          | Floor  | Square Footage | Lease Rate | CAM & Tax | Availability Date |
|----------------|--------|----------------|------------|-----------|-------------------|
| Unit 100       | Main   | 1,042          | \$16.00    | \$14.75   | LEASED            |
| Unit 102       | Main   | 1,116          | \$16.00    | \$14.75   | LEASED            |
| Unit 104       | Main   | 588            | \$16.00    | \$14.75   | LEASED            |
| Unit 106       | Main   | 1,260          | \$16.00    | \$14.75   | LEASED            |
| Unit 107       | Main   | 750            | \$16.00    | \$14.75   | Immediately       |
| Unit 111 / 112 | Main   | 2,060          | \$20.00    | \$14.75   | Immediately       |
| Unit 115       | Main   | 915            | \$16.00    | \$14.75   | LEASED            |
| Unit 116       | Main   | 1,656          | \$16.00    | \$14.75   | LEASED            |
| Unit 203       | Second | 3,458          | \$16.00    | \$14.75   | Immediately       |
| Unit 300       | Third  | 3,424          | \$16.00    | \$14.75   | LEASED            |
| Unit 303       | Third  | 2,963          | \$16.00    | \$14.75   | LEASED            |
| Unit 500/503   | Fifth  | 7,408          | \$16.00    | \$14.75   | LEASED            |
| Unit 506       | Fifth  | 4,049          | \$16.00    | \$14.75   | LEASED            |

\*5% management fee included

## RETAIL SPACE

| Suite          | Floor | Square Footage | Lease Rate          | CAM & Tax | Availability Date |
|----------------|-------|----------------|---------------------|-----------|-------------------|
| Unit 100       | Main  | 1,042          | Starting at \$20.00 | \$14.75   | LEASED            |
| Unit 102       | Main  | 1,116          | Starting at \$20.00 | \$14.75   | LEASED            |
| Unit 104       | Main  | 588            | Starting at \$20.00 | \$14.75   | LEASED            |
| Unit 106       | Main  | 1,260          | Starting at \$20.00 | \$14.75   | LEASED            |
| Unit 107       | Main  | 750            | \$16.00             | \$14.75   | Immediately       |
| Unit 111 / 112 | Main  | 2,060          | \$20.00             | \$14.75   | Immediately       |
| Unit 115       | Main  | 915            | Starting at \$20.00 | \$14.75   | LEASED            |
| Unit 116       | Main  | 1,656          | Starting at \$20.00 | \$14.75   | LEASED            |

\*5% management fee included

# The Area



Convenient location



Food and Drink nearby



Groceries and Shopping



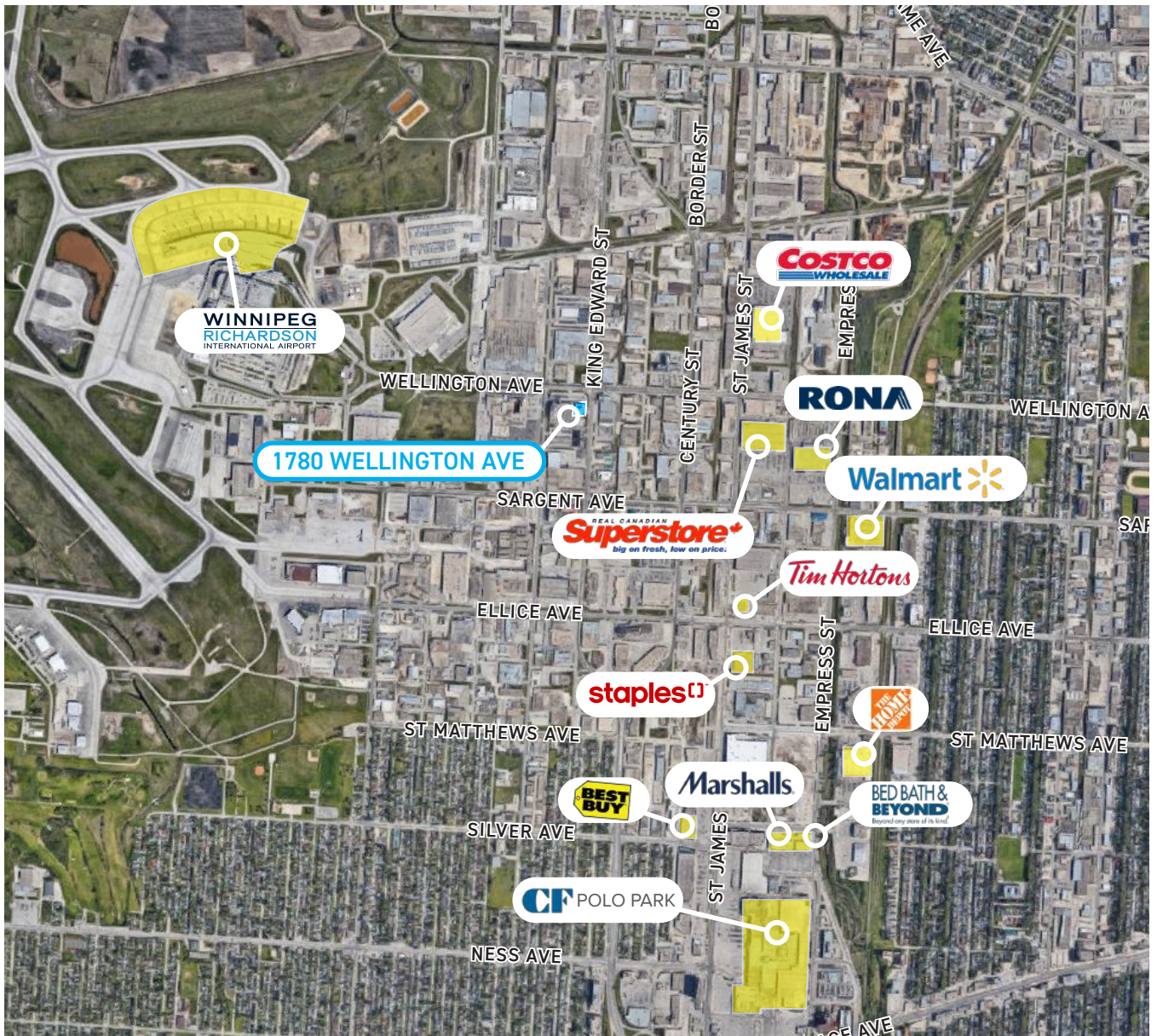
Amenities within distance



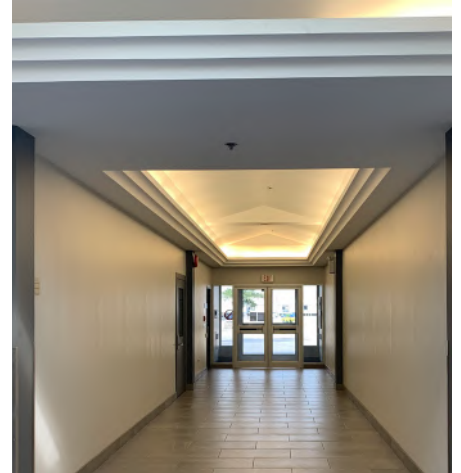
Some bike infrastructure



Some transit stops nearby



# Office Leasing Opportunities



## LOCATED IN AN ADJOINING HOTEL

Airport Executive Centre is the premier business location in northwest Winnipeg. This modern 5-storey office building is situated in the hotel district. It has become home to many international companies in the shipping, logistics, pharmacy and wealth management industries looking to establish a strong presence in Winnipeg.

When you arrive, you will park minutes from your door and start your day with a breakfast meeting at Oak and Grain. Efficient center core floor plate promotes light filled open office environments that guide you through your day with ease. Clients and guests will find this location easy to visit with an abundance of on site parking. End your day with a quick commute home, passing through the city's largest retail/shopping district offering a wide selection of grocery, retail, and professional services.

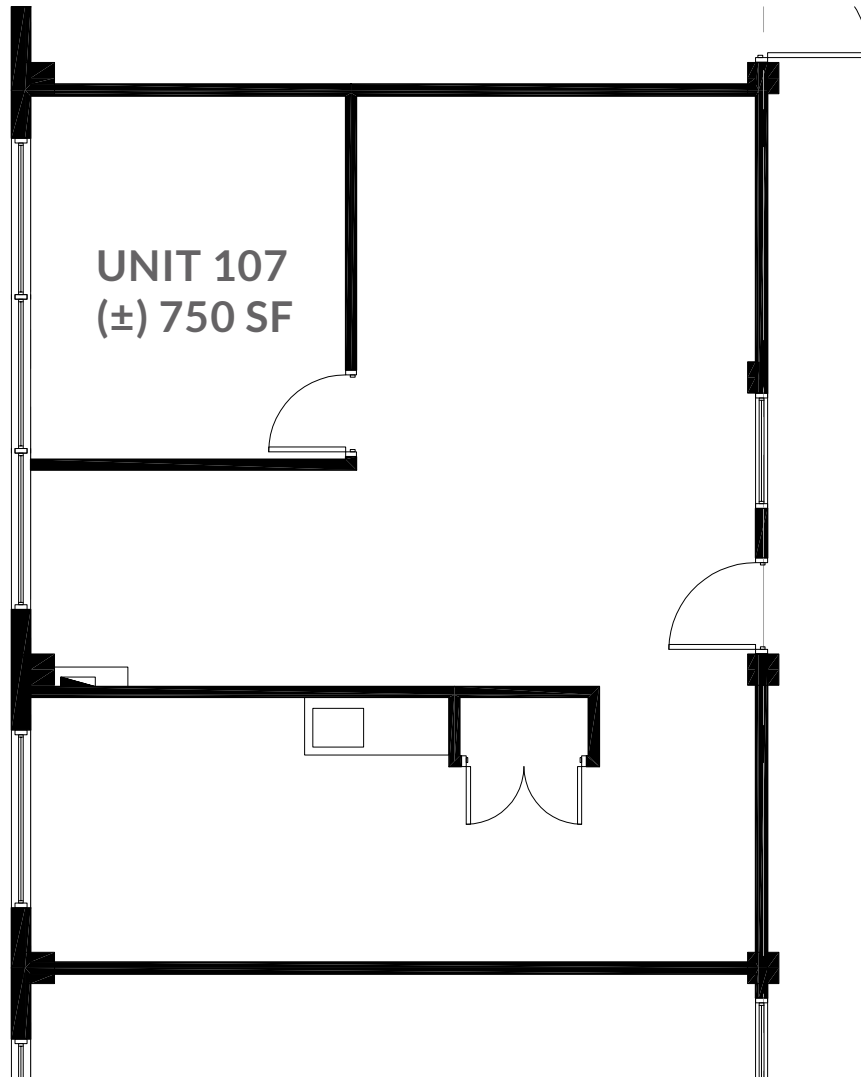


1780  
WELLINGTON  
AVENUE

**RE/MAX**  
COMMERCIAL®

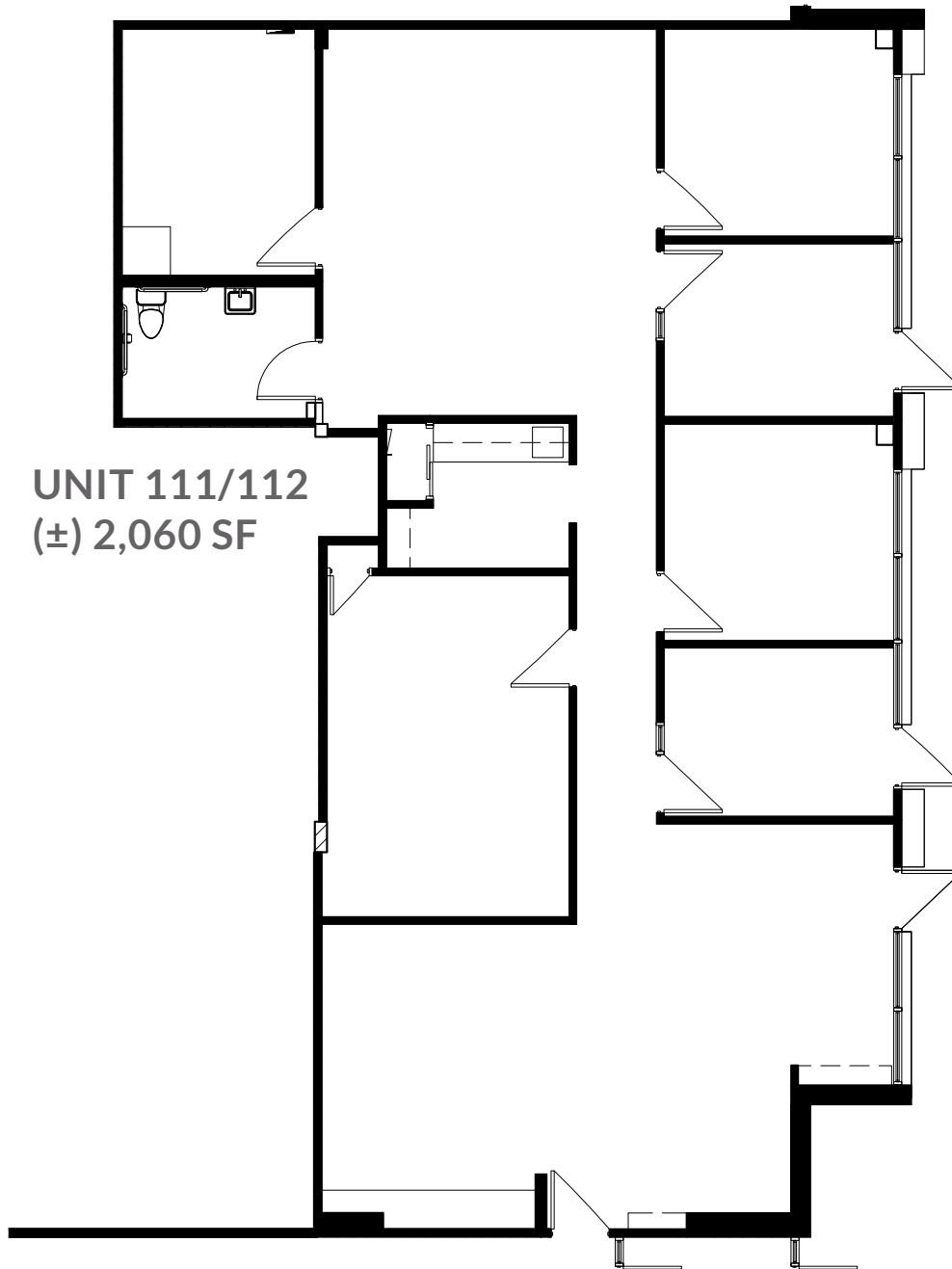






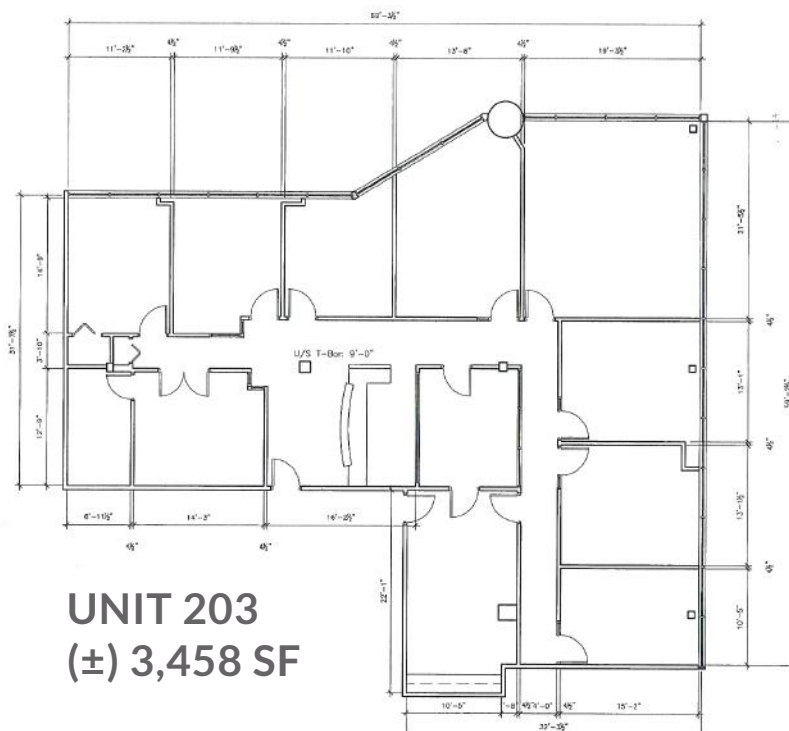
Note: square foot areas shown are rough approximations and are subject to verification





**UNIT 111/112**  
**(±) 2,060 SF**

Note: square foot areas shown are rough approximations and are subject to verification



**UNIT 203**  
**(±) 3,458 SF**

Note: square foot areas shown are rough approximations and are subject to verification



## CONTACT:

### WAYNE SATO

WAYNE SATO PERSONAL REAL ESTATE CORPORATION

Sales and Leasing Executive

c. 204-510-3311

o. 204-957-0500

[wayne@waynesato.ca](mailto:wayne@waynesato.ca)

[www.waynesato.ca](http://www.waynesato.ca)



Scan QR code  
to view website

This information has been obtained from sources believed to be reliable but has not been verified. NO WARRANTY OR REPRESENTATION, EXPRESS OR IMPLIED, IS MADE AS TO THE CONDITION OF THE PROPERTY (OR PROPERTIES) REFERENCED HEREIN OR AS TO THE ACCURACY OR COMPLETENESS OF THE INFORMATION CONTAINED HEREIN, AND SAME IS SUBMITTED SUBJECT TO ERRORS, OMISSIONS, CHANGE OF PRICE, RENTAL OR OTHER CONDITIONS, WITHDRAWAL WITHOUT NOTICE, AND TO ANY SPECIAL LISTING CONDITIONS IMPOSED BY THE PROPERTY OWNER(S). ANY PROJECTIONS, OPINIONS OR ESTIMATES ARE SUBJECT TO UNCERTAINTY AND DO NOT SIGNIFY CURRENT OR FUTURE PROPERTY PERFORMANCE. Wayne Sato Personal Real Estate Corporation, RE/MAX Professionals / Each office is independently owned and operated.

**RE/MAX**  
COMMERCIAL<sup>®</sup>

1601 Buffalo Pl | Winnipeg, MB | R3T 3K7 | o. 204-957-0500 | f. 204-452-4359 | [wpgproperty.ca](http://wpgproperty.ca)