

#3428, 3500

25 Street NE

Calgary, Alberta

**Evan Renwick**

Vice President

+1 403 750 0807

[evan.renwick@cbre.com](mailto:evan.renwick@cbre.com)

**Cameron Woods**

Vice President

+1 403 303 4562

[cameron.woods@cbre.com](mailto:cameron.woods@cbre.com)

3,067 SF Industrial Flex Space



#3428, 3500 25 Street NE

Calgary, Alberta | T1Y 6C1



Rentable Area	Office:	±2,767 SF
	Warehouse:	±300 SF
	Total Rentable Area:	3,067 SF
Loading	1 x Dock	
Ceiling Height	18'	
Power	100 Amp	
Operating Costs	\$9.88 PSF	
Lease Rate	\$13.75 PSF	
Availability	August 1, 2024	

18'

Ceiling Height

\$9.88

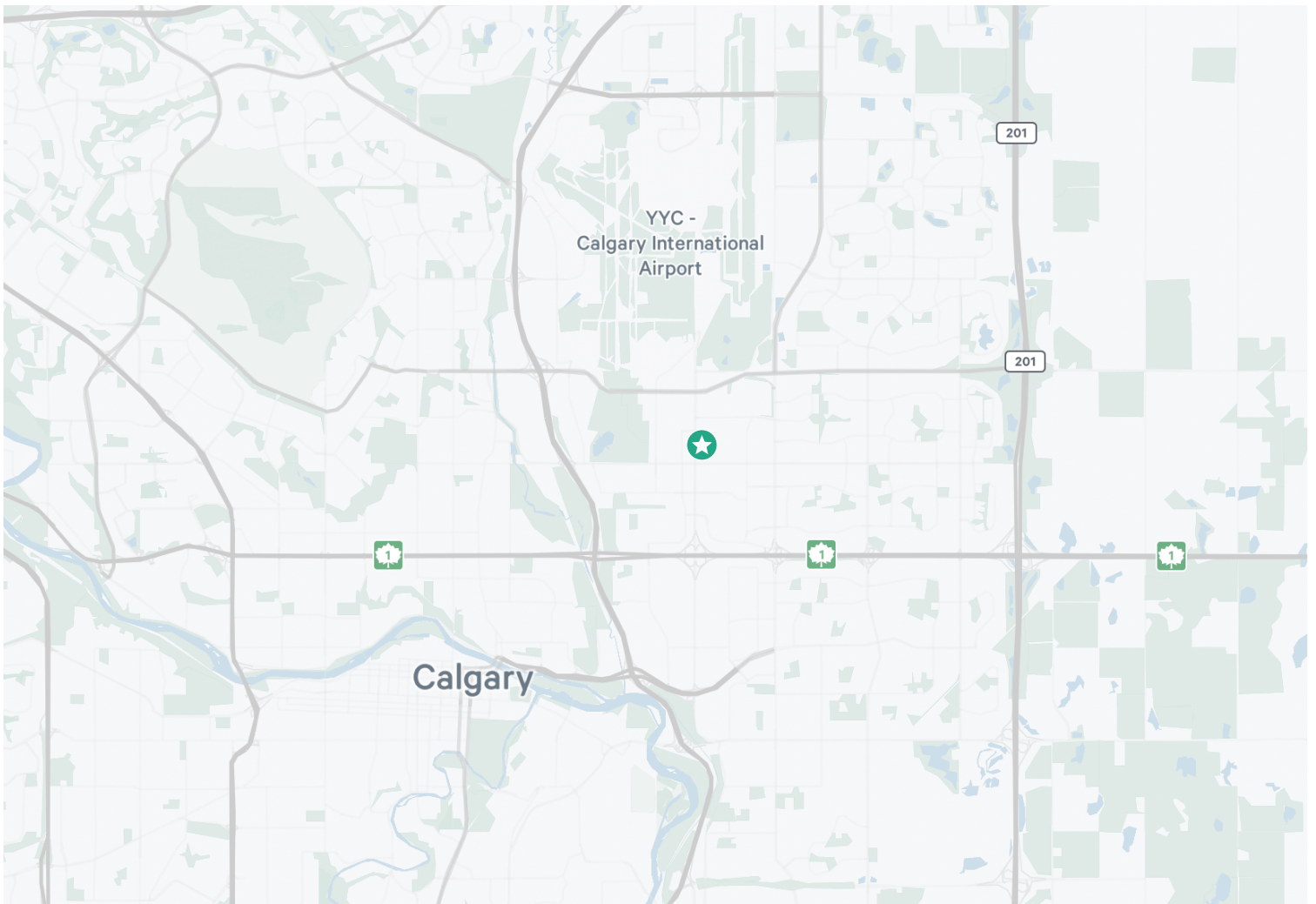
Operating Costs (PSF) (Est.)

\$13.75

Lease Rate (PSF)

## Property Highlights

- + Unit located within Imperial Square industrial complex with excellent visibility from Barlow Trail NE (37,000 vehicles per day)
- + Well positioned office space with ability to increase warehouse size
- + 8 private offices, kitchenette, training room and front reception
- + Surrounding area well serviced by retail and commercial service tenant amenities in high concentration



#3428, 3500 25 Street NE  
Calgary, Alberta | T1Y 6C1

For Lease

Rentable Area Breakdown

±2,767

Office (SF)

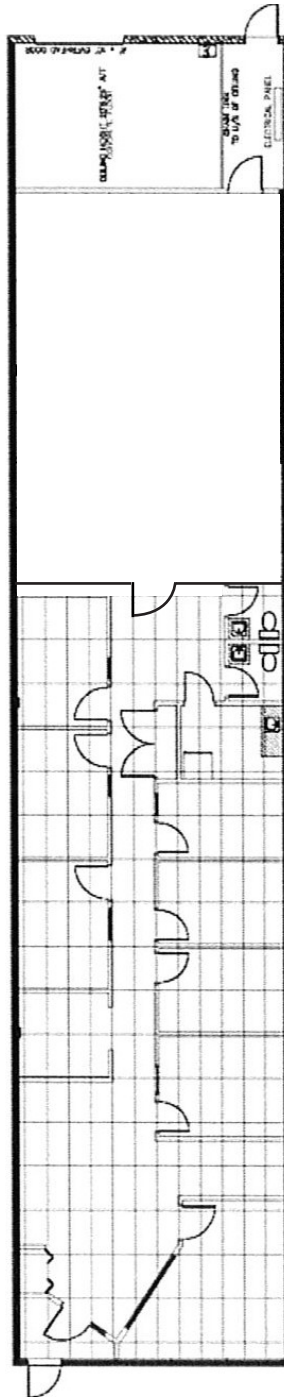
±300

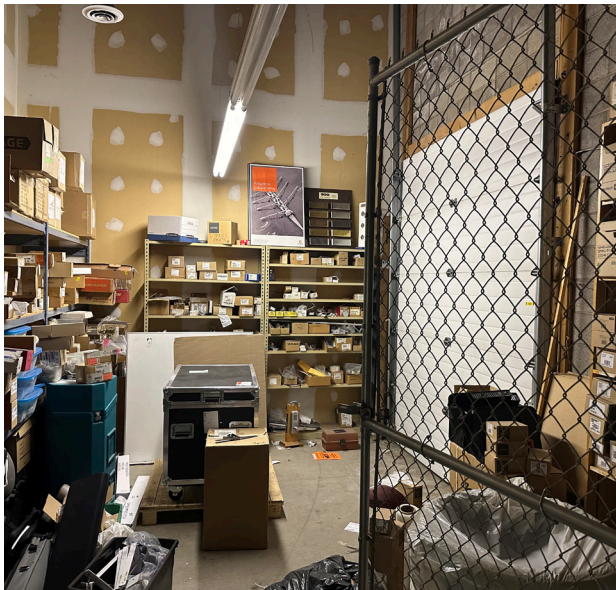
Warehouse (SF)

3,067

Total Rentable Area (SF)

Floor Plan





## Contact Us

### Evan Renwick

Vice President  
+1 403 750 0807  
evan.renwick@cbre.com  
**\*Lead Broker**

### Cameron Woods

Vice President  
+1 403 303 4562  
cameron.woods@cbre.com  
**\*Lead Broker**

### Blake Ellis

Vice President  
+1 403 750 0519  
blake.ellis@cbre.com

This disclaimer shall apply to CBRE Limited, and to all divisions of the Corporation ("CBRE"). The information set out herein (the "Information") has not been verified by CBRE, and CBRE does not represent, warrant or guarantee the accuracy, correctness and completeness of the Information. CBRE does not accept or assume any responsibility or liability, direct or consequential, for the Information or the recipient's reliance upon the Information. The recipient of the Information should take such steps as the recipient may deem necessary to verify the Information prior to placing any reliance upon the Information. The Information may change and any property described in the Information may be withdrawn from the market at any time without notice or obligation to the recipient from CBRE.

Mapping Sources: Canadian Mapping Services [canadamapping@cbre.com](mailto:canadamapping@cbre.com); DMTI Spatial, Environics Analytics, Microsoft Bing, Google Earth.