

FOR LEASE

6025

12 STREET SE

Calgary, AB



## PROPERTY HIGHLIGHTS

- + Move-in ready show suites available
- + Green space located just outside the building
- + Recently renovated common areas
- + 5 minute drive to Deerfoot Meadows Shopping Centre
- + Easy access/egress to Blackfoot Trail and Deerfoot Trail

## PROPERTY DESCRIPTION

<b>Space Available</b>	Suite 200: 7,112 SF Suite 235: 1,505 SF* Suite 245: 3,092 SF
<b>Base Rent</b>	Market
<b>Operating Costs</b>	\$13.45 PSF
<b>Available</b>	Immediately *December 1st, 2023
<b>Parking</b>	Free scramble

[www.cbre.ca/calgary](http://www.cbre.ca/calgary)

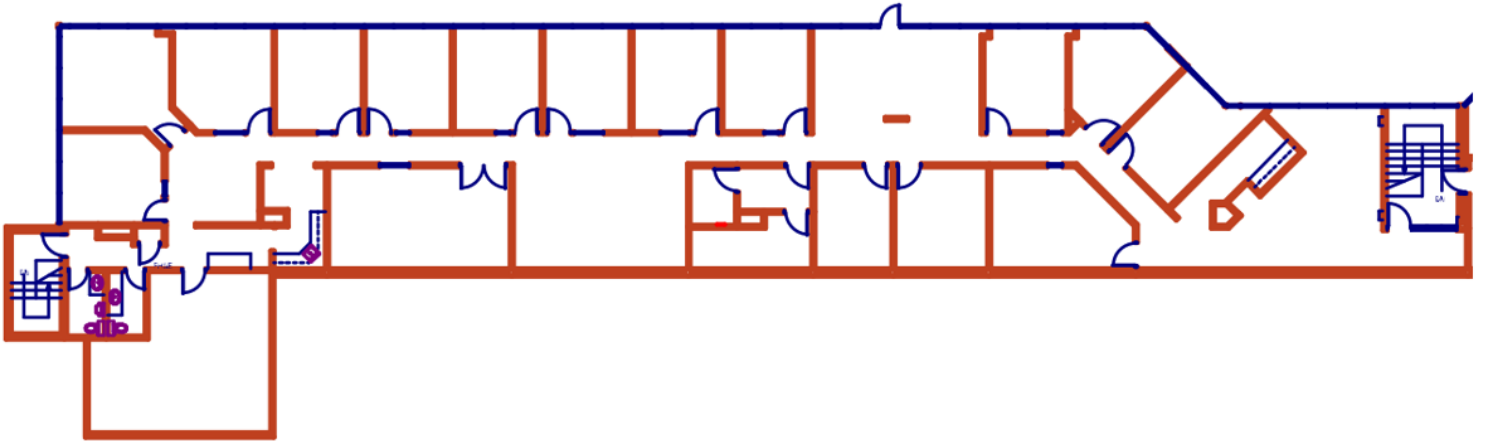
**CBRE**

FOR LEASE

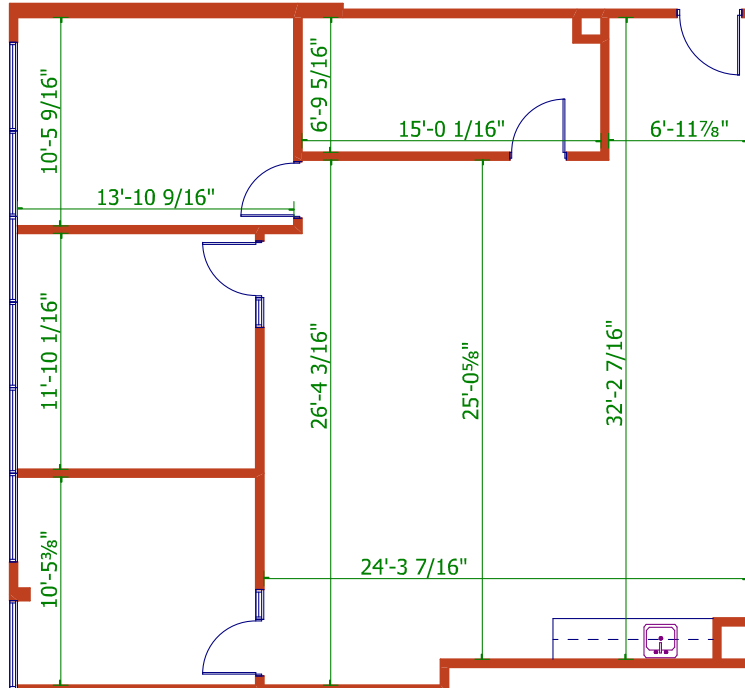
6025  
12 STREET SE  
Calgary, AB



Suite 200:  
7,112 SF



Suite 235:  
1,505 SF

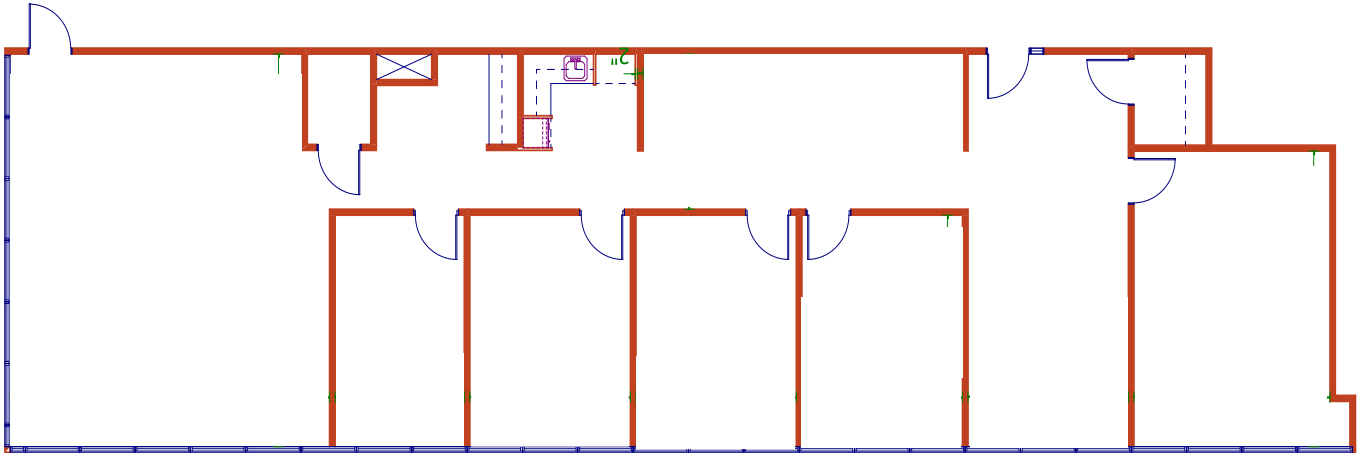


FOR LEASE

6025  
12 STREET SE  
Calgary, AB



Suite 245:  
3,092 SF





FOR LEASE

6025  
12 STREET SE  
Calgary, AB



Aerial Map



MAPPING SOURCES: CANADIAN MAPPING SERVICES CANADAMAPPING@CBRE.COM, DMTI SPATIAL, ENVIRONICS ANALYTICS, MICROSOFT BING, GOOGLE EARTH.



## CONTACT US

### STUART WATSON

Senior Vice President  
+1 403 750 0540  
stuart.watson@cbre.com

### KATIE SAPIEHA

Vice President  
+1 403 750 0529  
katie.sapieha@cbre.com

This disclaimer shall apply to CBRE Limited, Real Estate Brokerage, and to all other divisions of the Corporation; to include all employees and independent contractors ("CBRE"). The information set out herein, including, without limitation, any projections, images, opinions, assumptions and estimates obtained from third parties (the "Information") has not been verified by CBRE, and CBRE does not represent, warrant or guarantee the accuracy, correctness and completeness of the Information. CBRE does not accept or assume any responsibility or liability, direct or consequential, for the Information or the recipient's reliance upon the Information. The recipient of the Information should take such steps as the recipient may deem necessary to verify the Information prior to placing any reliance upon the Information. The Information may change and any property described in the Information may be withdrawn from the market at any time without notice or obligation to the recipient from CBRE. CBRE and the CBRE logo are the service marks of CBRE Limited and/or its affiliated or related companies in other countries. All other marks displayed on this document are the property of their respective owners. All Rights Reserved.

[www.cbre.ca/calgary](http://www.cbre.ca/calgary)

**CBRE**