

Sommaire - Summary

Last Web Update: 2016-10-05

Adresse: 8455-8475 Henri-Bourassa Est
Address:
Quartier: Rivière-des-Prairies
District:
Rue transversale: du Golf
Crossroad:
Superficie minimum: 3,700 pi² / ft²
Minimum Area
Superficie maximum: 7,700 pi² / ft²
Maximum Area:

À vendre: For Sale
À louer: For Lease
Sous-location: Sublease:



Spécifications - Specifications

Hauteur libre: 9' Disponibilité:
Clear Height: Availability:
Quais d'expédition: 0 Année de const.: 2011
Truck Level Doors: Year of Const.:
Portes niveau sol: 0 Stationnement:
Drive-in Doors: Parking:

Amps Volts Climatisation
Office - AC
Entrée électrique: 0 0 Gicleurs
Electrical Entry: 0 0 Sprinklers

Chauffage - Entrepôt:
Warehouse Heating
Chauffage - Bureaux: HVAC
Office Heating
Genre de bâtiment: Multi-locatif / Multi-Tenant
Building Type:
Type d'espace:
Premises Type:

Dimensions: 80' X 50' Colonne: 50' X 40'
Dimensions: Column Spans:

Superficie de terrain:
Land Area:

Zonage:
Zoning:

Description légale: 1618288
Legal Description:

Two storey executive office space located on Henri-Bourassa close to Autoroute 25. Immediate occupancy. Can lease either the entirety of 1st floor or mezzanine. If required, office tenants have the possibility to lease the Warehouse space.

Détails des lieux - Area Breakdown

Superficies: Area Breakdown:	Bureaux Office	Entrepôt Warehouse	Total
RDC / Ground:	3,700	0	3,700
Mezzanine:	4,000	0	4,000
Total:	7,700	0	7,700

Sommaire financier - Financial Summary

Loyer au pi²: Brut / Gross \$10.00
Rental per SqFt:

Frais d'exploitation (est.): \$0.00
Operating Expenses (est.):

Loyer mensuel:
Monthly Rental:

Frais d'exploit. mensuels (est.):
Monthly Operating Exp. (est.):

Loyer total mensuel:
Total Monthly Rental:

Prix demandé:
Asking Price:

Prix au pi²:
Price Per SqFt:

Hypothèque existante
Existing Mortgage:

Contactez-nous
Contact us

Évaluation / Assessment - 0

Terrain / Land:

Bâtiment / Building:

Total:

Taxes foncières / Property Taxes

Municipales / Municipal:

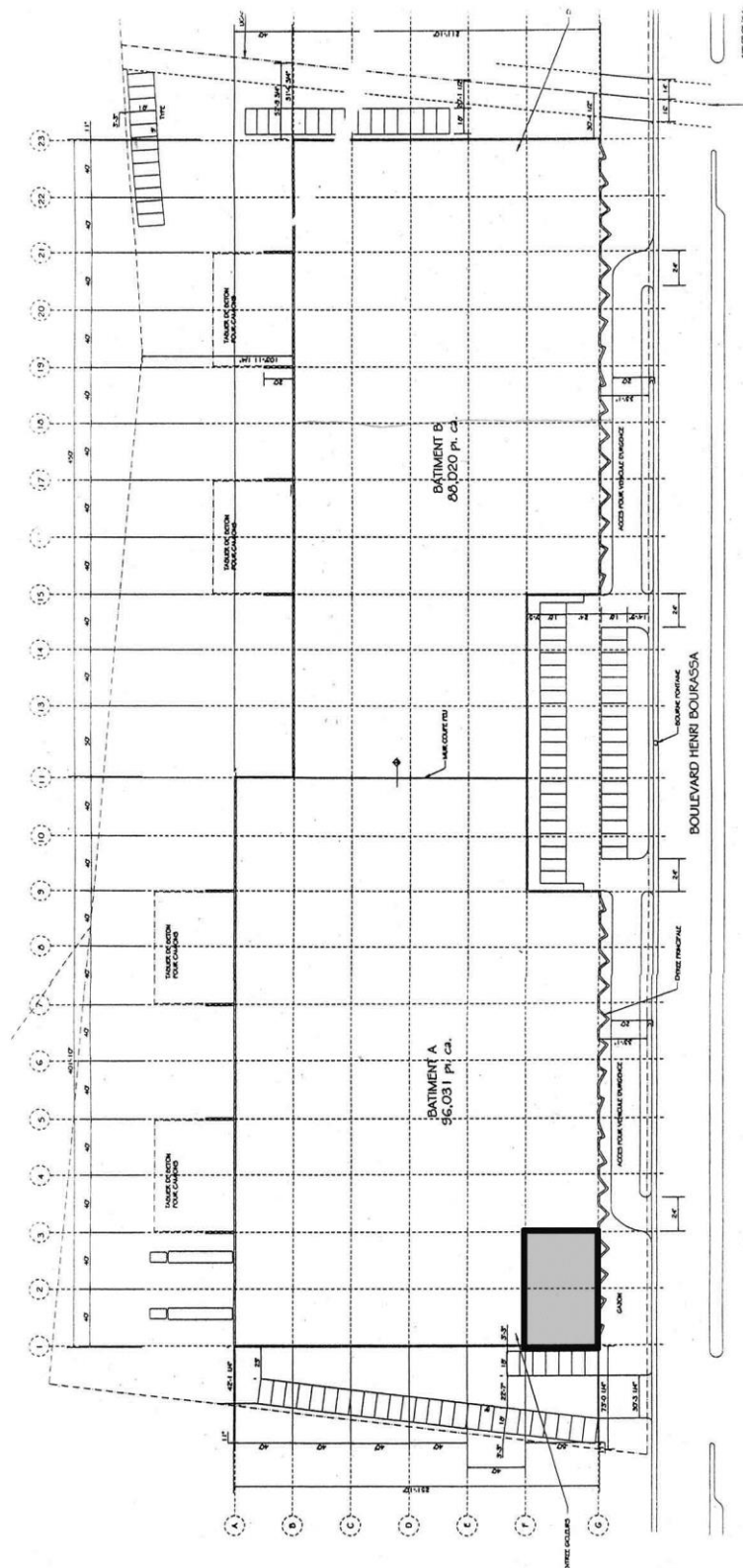
Scolaires / School:

Total:

Liens:
Links:

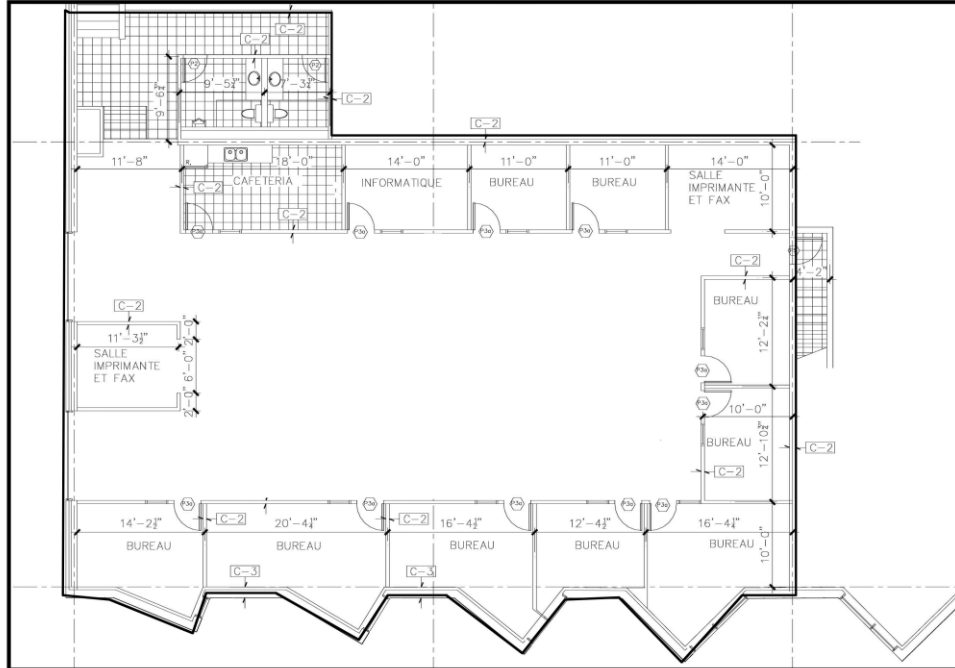


8455-8475 Henri-Bourassa Est, Rivière-des-Prairies

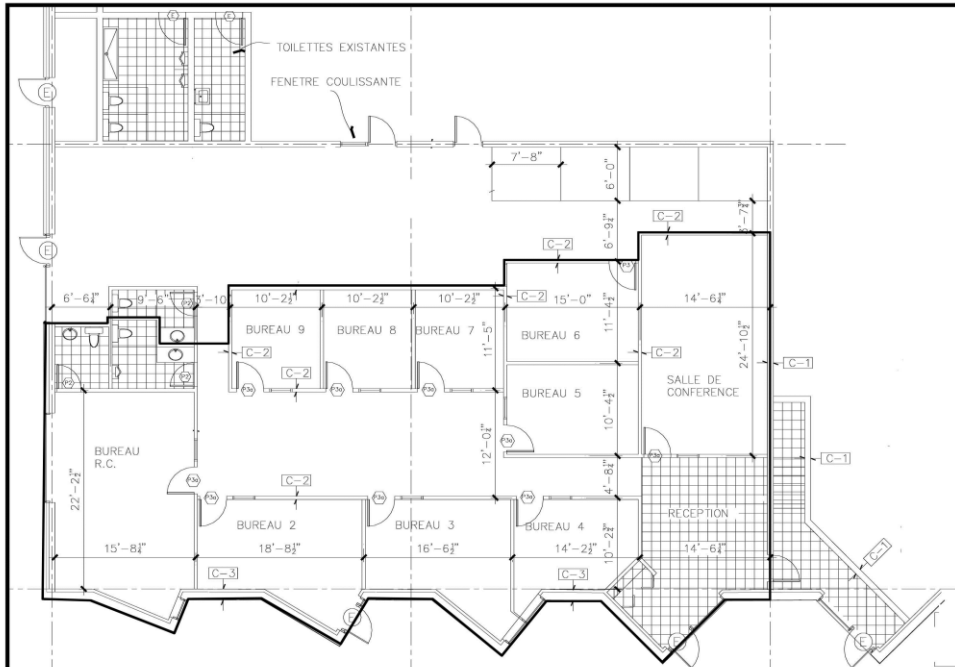


Les informations ci-haut mentionnées proviennent de sources que nous jugeons fiables, mais pour lesquelles nous n'assumons aucune responsabilité ni garantie. Ces renseignements sont sujets aux erreurs, changements, pré-vente, location ou retrait du marché sans avis. / Statements contained herein are based on information furnished by sources we deem reliable, but for which we assume no responsibility and no warranties are made or implied. This submission is made subject to errors, omissions, changes, prior sale/lease or withdrawal from the market without notice.

8455-8475 Henri-Bourassa Est, Rivière-des-Prairies



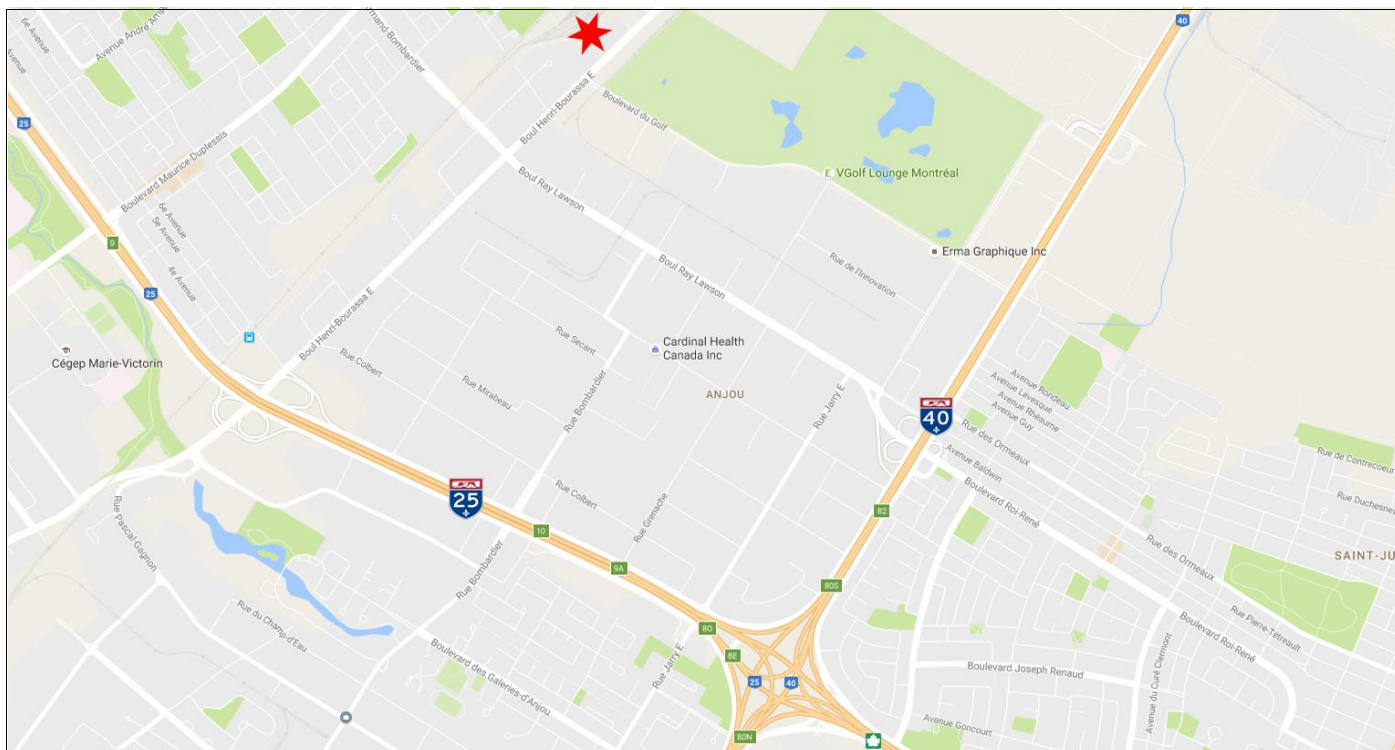
Mezzanine



Ground Floor

Les informations ci-haut mentionnées proviennent de sources que nous jugeons fiables, mais pour lesquelles nous n'assumons aucune responsabilité ni garantie. Ces renseignements sont sujets aux erreurs, changements, pré-vente, location ou retrait du marché sans avis. / Statements contained herein are based on information furnished by sources we deem reliable, but for which we assume no responsibility and no warranties are made or implied. This submission is made subject to errors, omissions, changes, prior sale/lease or withdrawal from the market without notice.

8455-8475 Henri-Bourassa Est, Rivière-des-Prairies



Les informations ci-haut mentionnées proviennent de sources que nous jugeons fiables, mais pour lesquelles nous n'assumons aucune responsabilité ni garantie. Ces renseignements sont sujets aux erreurs, changements, pré-vente, location ou retrait du marché sans avis. / Statements contained herein are based on information furnished by sources we deem reliable, but for which we assume no responsibility and no warranties are made or implied. This submission is made subject to errors, omissions, changes, prior sale/lease or withdrawal from the market without notice.