

FOR LEASE

Bow River Professional

4411 16 Ave NW Calgary



For more information, please contact :

DALE COUPRIE

Senior Leasing Agent

Cell : (403) 852 4448 Fax : (403) 228 4439

dcouprrie@bowriverleasing.com

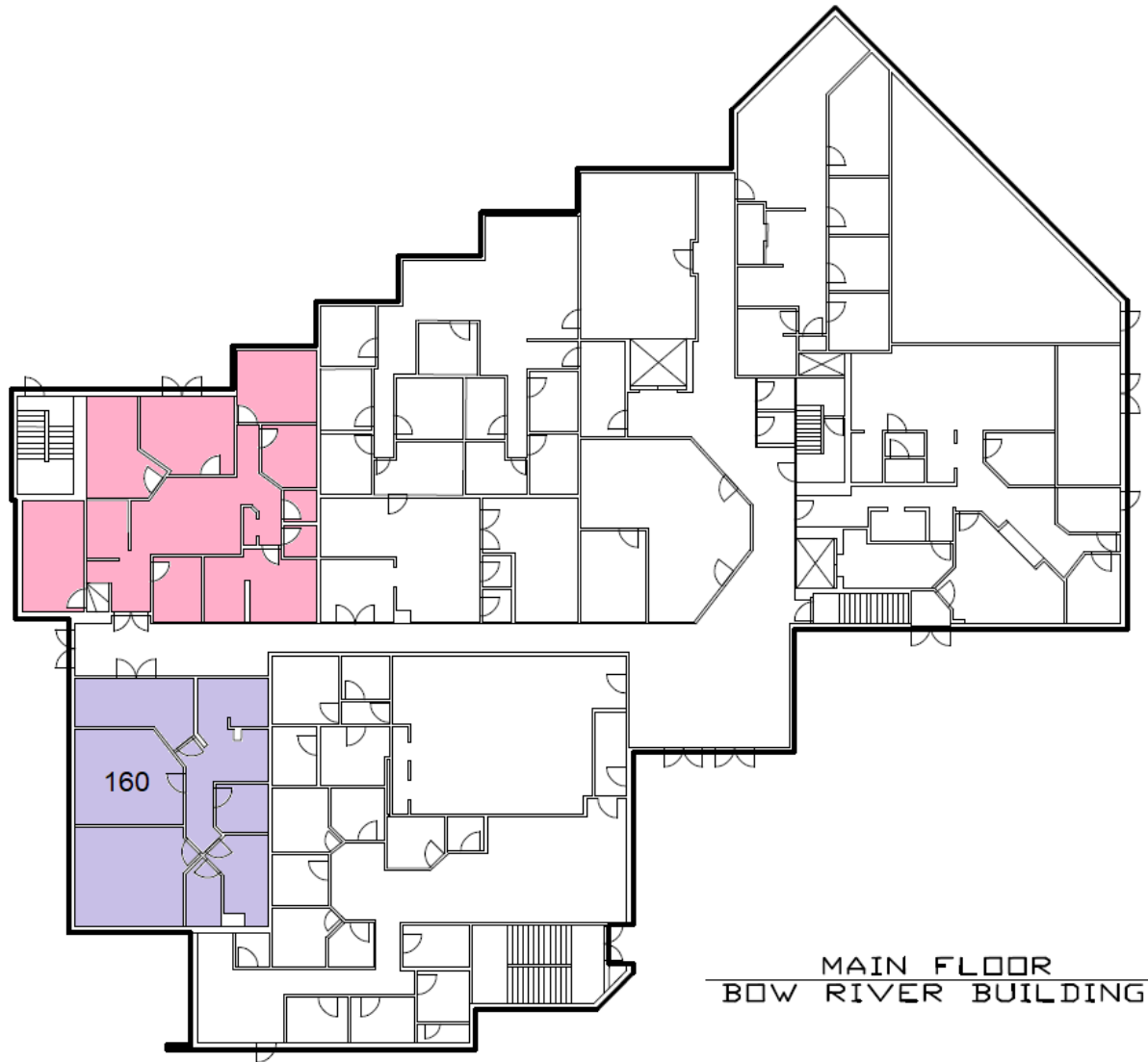
BOW RIVER PROPERTY MANAGEMENT AND LEASING

B250 2210, 2nd Street, SW
Calgary, AB. T2S 3C3

<http://www.bowriverleasing.com>

Floor 1

Bow River Professional Center
4411 16th Avenue NW



HIGHLIGHTS

Suite - 160

- * Storage
- * Reception area
- * Ensuite washroom(s)
- * Kitchen area
- * Sink(s)
- * Telephone hub
- * Data hub
- * 1448 sf

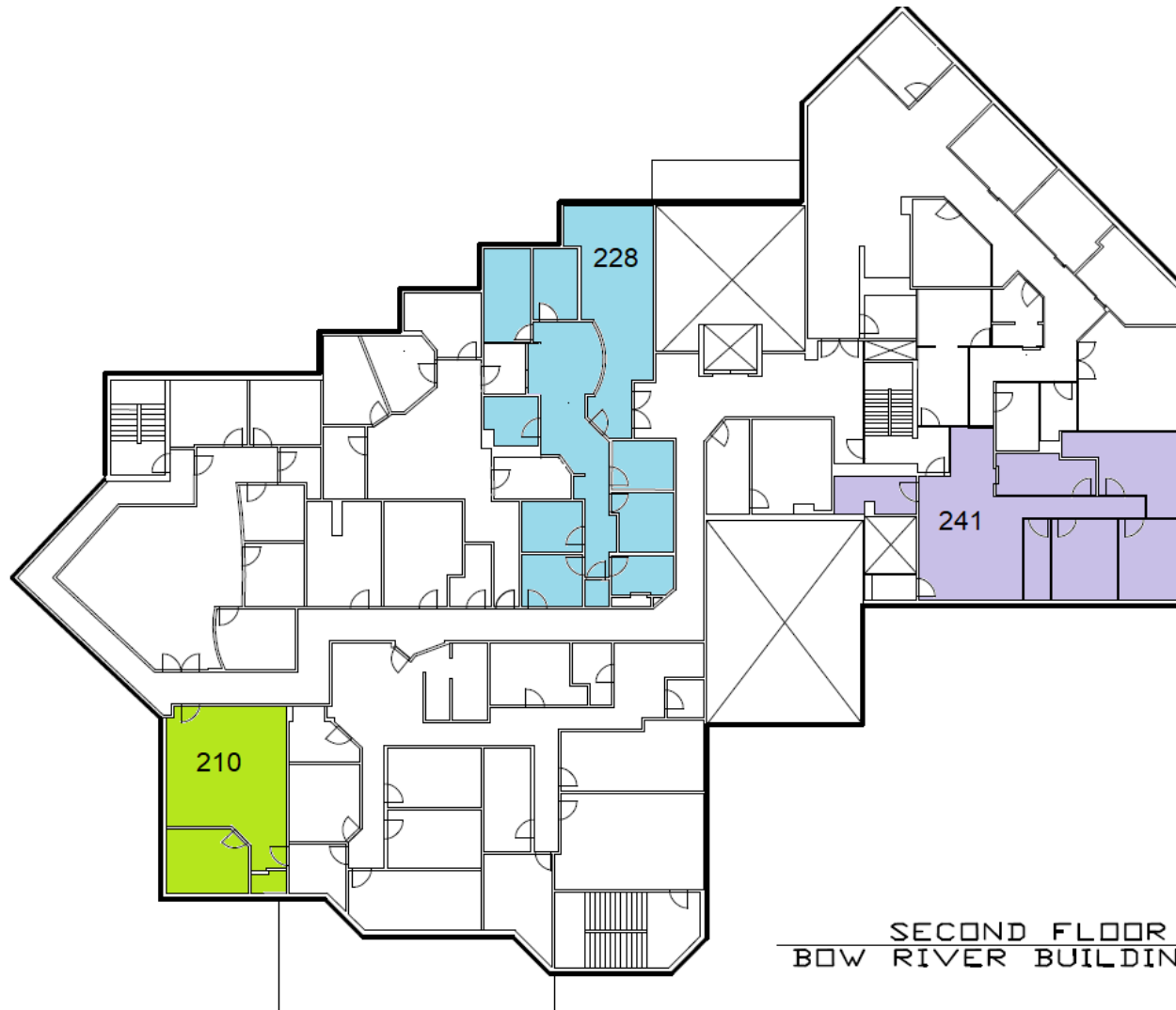
Suite - 150

- * New flooring and paint.
- * Available window coverings.
- * 7 rooms
- * view : River
- * 1839 sf

MAIN FLOOR
BOW RIVER BUILDING

Floor 2

Bow River Professional Center
4411 16th Avenue NW



SECOND FLOOR
BOW RIVER BUILDING

HIGHLIGHTS

Suite - 241

- * 6 rooms
- * 1665 sf

Suite - 228

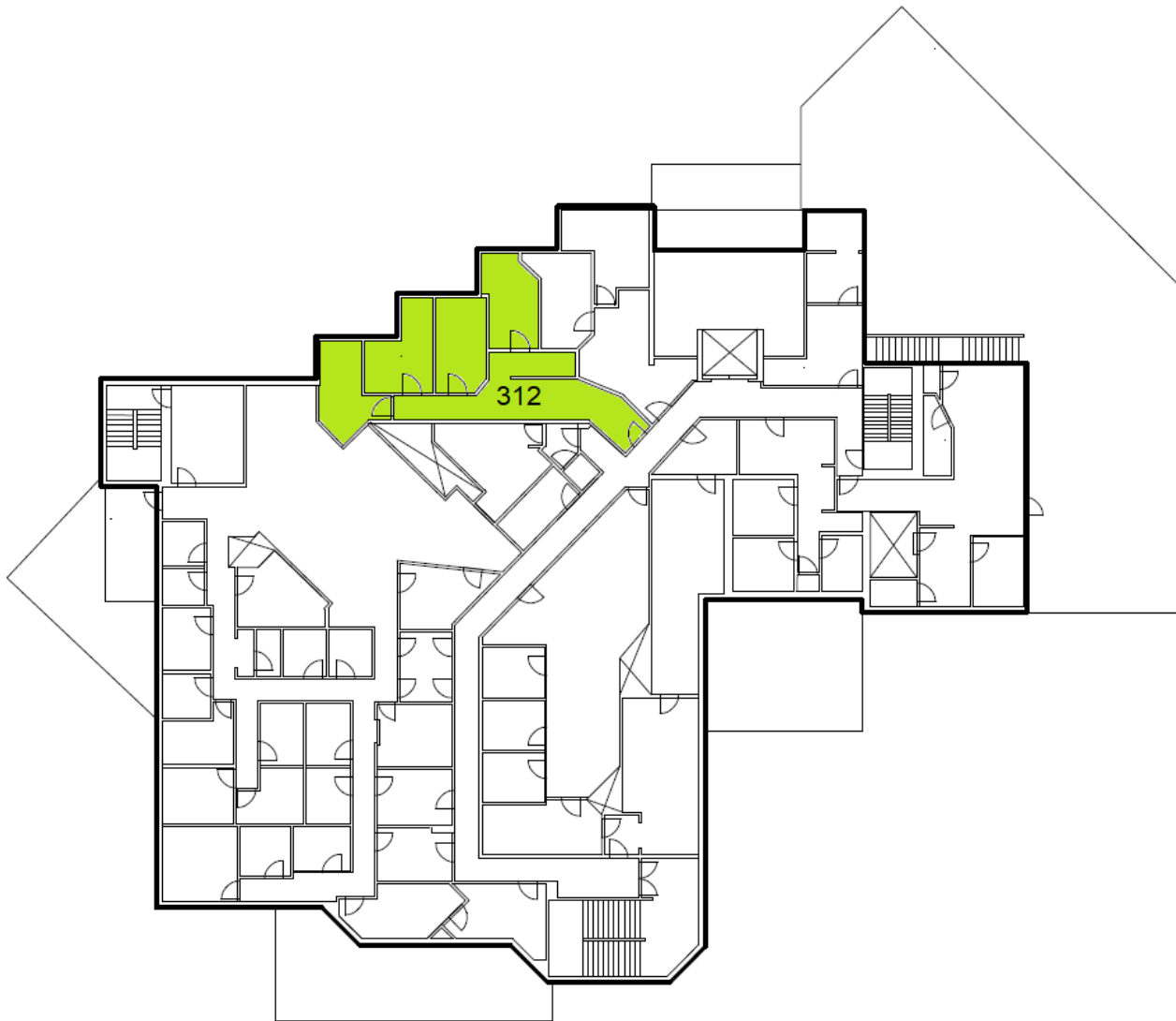
- * 9 rooms
- * Reception area
- * Ensuite washroom(s)
- * 1908 sf

Suite - 210

- * 3 rooms
- * Ensuite shower room(s)
- * Open space
- * 771 sf

Floor 3

Bow River Professional Center
4411 16th Avenue NW



HIGHLIGHTS

Suite - 312

- * 4 rooms
- * view : River
- * Storage
- * Reception area
- * 1100 sf