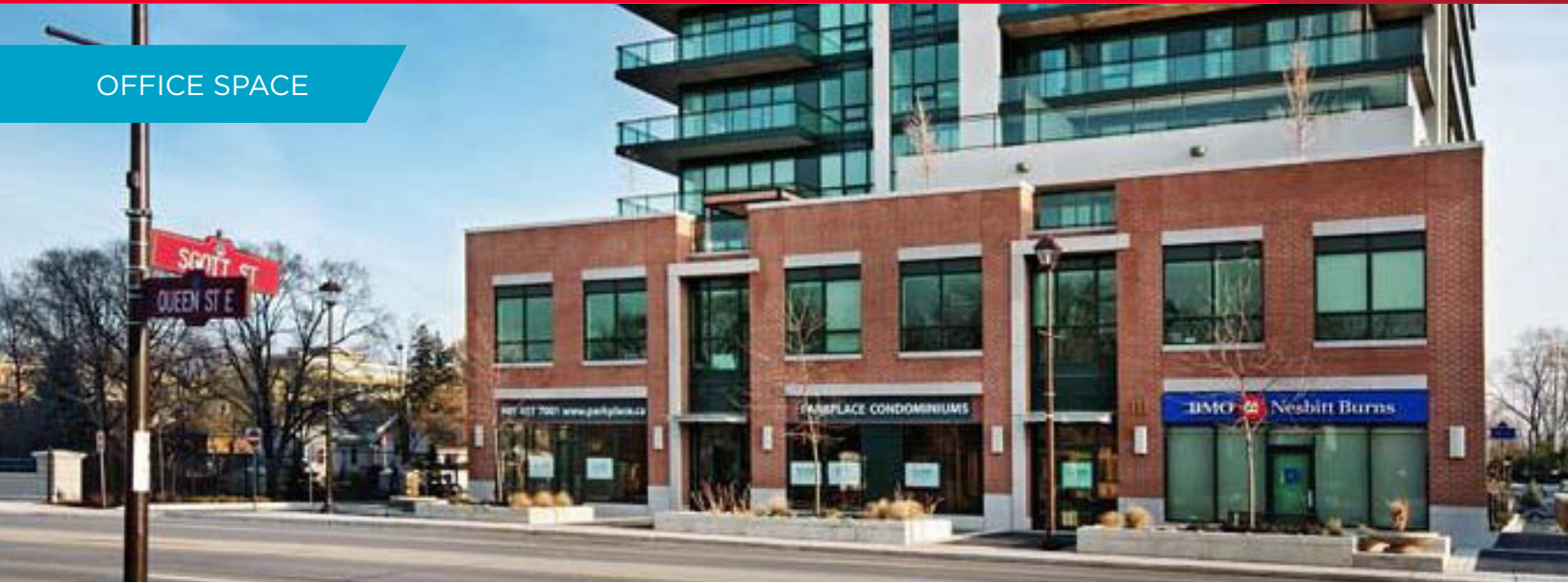


OFFICE SPACE

FEATURES:

111 Queen is the Retail/Office component of Park Place Condominiums. Park Place is a mixed-use development bringing great excitement to the city core. At the base of the 27-storey (225-unit) luxury condominium is 9,420 square feet of boutique retail/office space. Tastefully detailed and highly efficient, 111 Queen Street East is ideally located in beautiful downtown Brampton just steps from a host of amenities including the Peel Memorial Hospital site, the Rose Theatre, City Hall, Gage Park and more.

DETAILS:

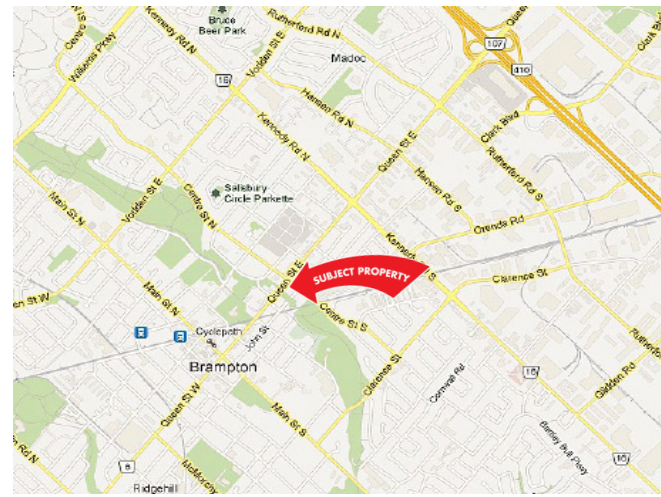
Location: Southeast corner of Queen and James Streets
 Parking: Mix of surface and underground
 Rental Rate: \$19.75/sf net + \$8.00 TMI

AREA AVAILABLE:

Unit 102	789 sq. ft.
Unit 103	926 sq. ft.
Unit 104	1,061 sq. ft.
Unit 102 - 103	1,715 sq. ft.
Unit 103 - 104	1,987 sq. ft.
Unit 102 - 104	2,776 sq. ft.

Bob Cranch
 Sales Representative
 Vice President
 905 501 6472
 bob.cranch@cushwake.com

Steve Gottdank
 Sales Representative
 Vice President
 905 501 6464
 steve.gottdank@cushwake.com



1 Prologis Boulevard, Suite 300
 Mississauga, ON, L5W 0G2
 main 905 568 9500
 fax 905 568 9444
cushmanwakefield.com



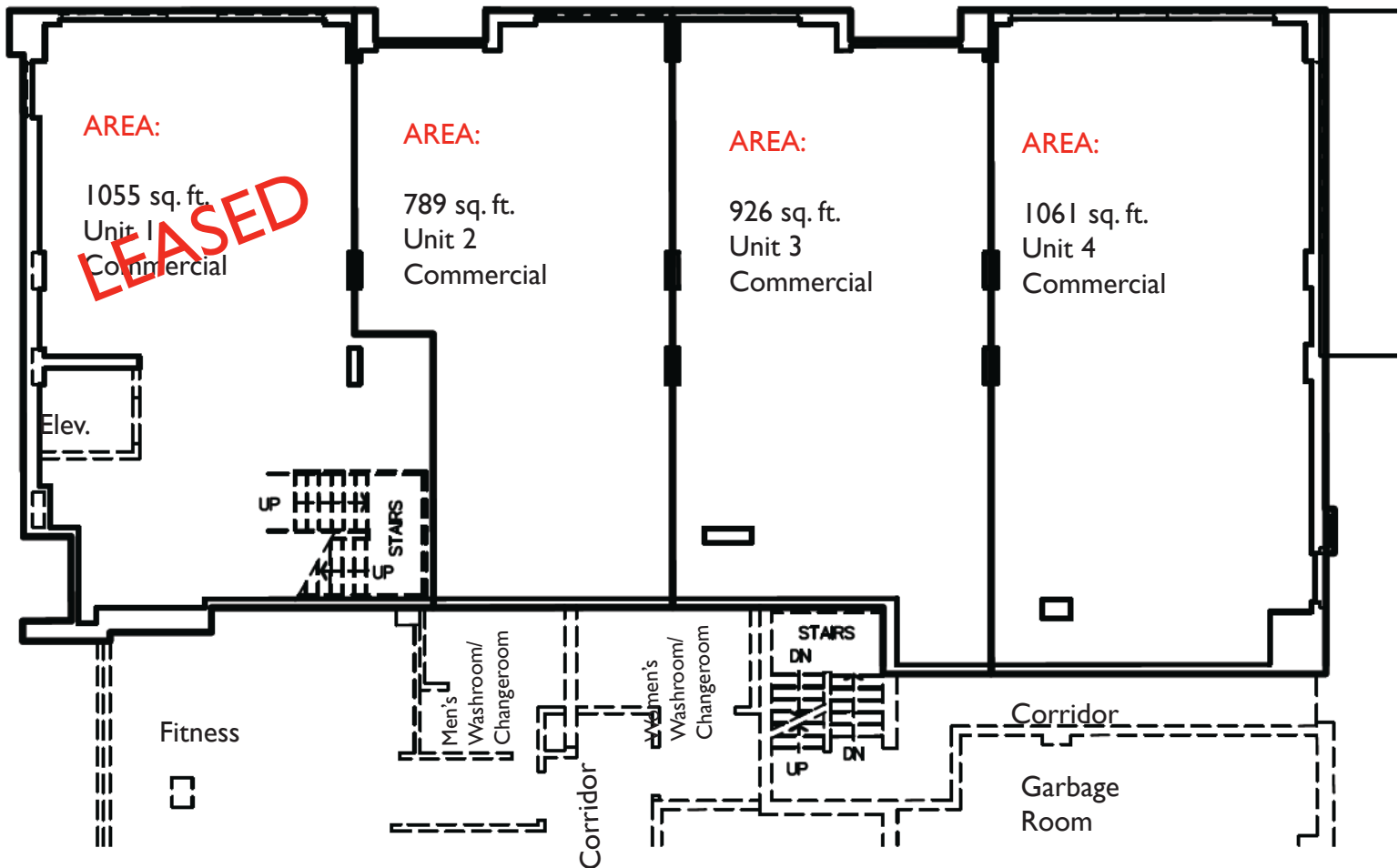
**CUSHMAN &
WAKEFIELD**

FOR LEASE

111 Queen Street East

Brampton, Ontario

FIRST FLOOR



BOMA

Bob Cranch
Sales Representative
Vice President
905 501 6472
bob.cranch@cushwake.com

Steve Gottdank
Sales Representative
Vice President
905 501 6464
steve.gottdank@cushwake.com

1 Prologis Boulevard, Suite 300
Mississauga, ON, L5W 0G2
main 905 568 9500
fax 905 568 9444
cushmanwakefield.com

Cushman & Wakefield Ltd., Brokerage

Cushman & Wakefield Copyright 2016. No warranty or representation, express or implied, is made to the accuracy or completeness of the information contained herein, and same is submitted subject to errors, omissions, change of price, rental or other conditions, withdrawal without notice, and to any special listing conditions imposed by the property owner(s). As applicable, we make no representation as to the condition of the property (or properties) in question.