



# 1000

INNOVATION DRIVE

KANATA, ONTARIO

## FOR LEASE

AVAILABILITIES

Suite 210 = 13,339 sq.ft.

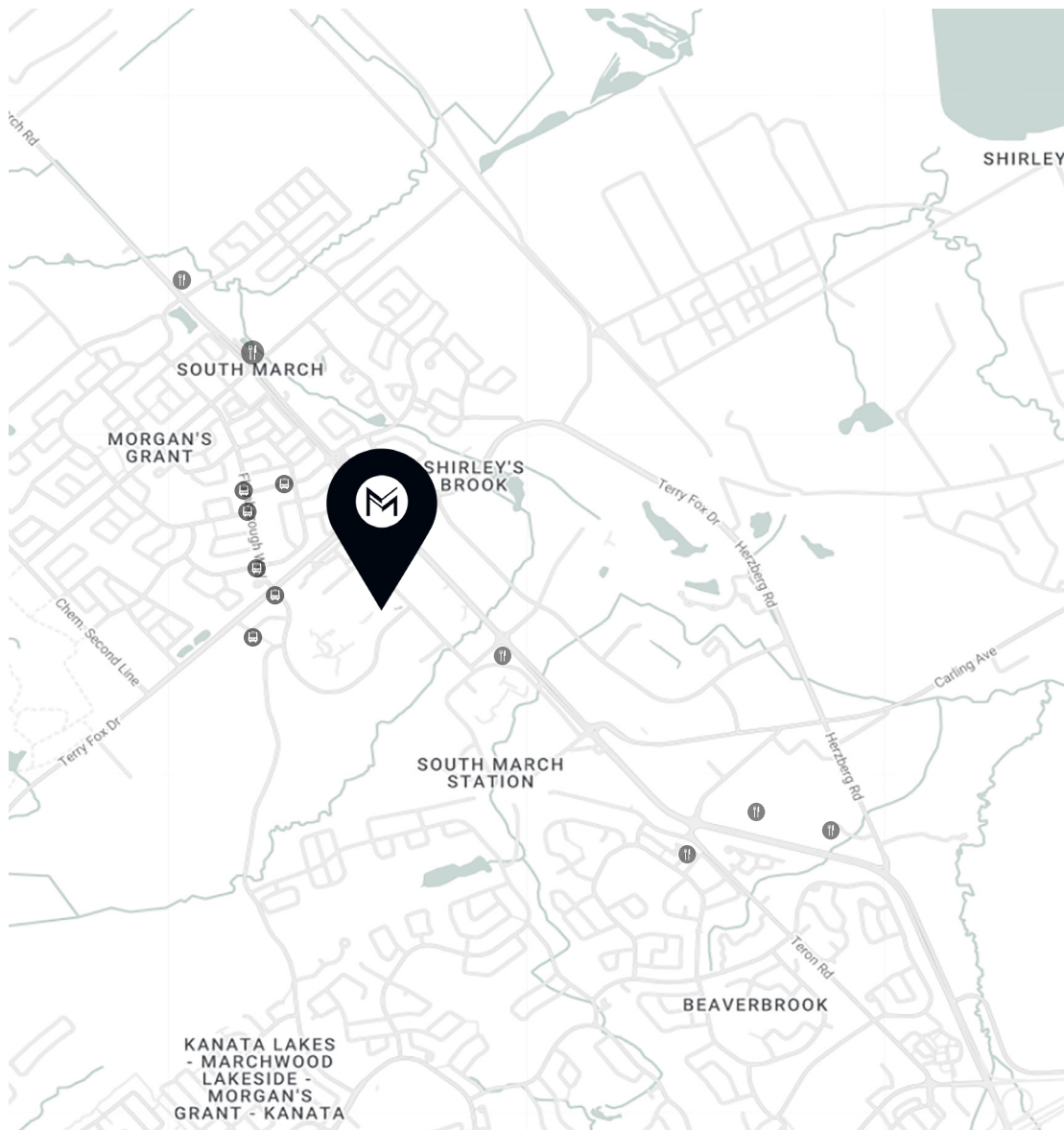
Suite 301 = 14,291 sq.ft.

Suite 410 = 12,840 sq.ft.

**MACH**  
PROPERTY

# SURROUNDING AREAS

1000 Innovation is located at the entrance of the NorthTechCampus, alongside of the existing building, on a 150-acre state-of-the-art technology campus in Kanata. The building is located at 5 minutes from provincial Highway 417 and 10 minutes from Highway 416. There are also nature trails for walking, biking, and running nearby. It is close to many retail amenities, including restaurants, banks, LCBO, and many others.

**METRO***Tim Hortons***LCBO**

# 1000 INNOVATION DRIVE, KANATA

NET RENT	CAM	TAXES	TOTAL ADDITIONAL RENT
Please contact agent	\$12.35	\$5.23	\$17.58

FEATURES	
Year built	2000
Number of floors	5-storey
GLA (AF)	148,338 sq.ft.
Parking space	575 outdoor spaces
Parking ratio	4 per 1,000 sq.ft.
Fire protection	The building is fully equipped with sprinklers, the main fire panel is an EST3 monitored by NASS. The labs have EST2 panels linked to the building's main panel. The MCR and Gatehouse have a pre-action sprinkler system. All the panels are equipped with batteries and are on the emergency generator circuit.
Telecom provider	Allstream, Bell, Rogers
Building Amenities	Showers, secured bike racks
Public transit	Close to public transit and major arterial routes. Five minutes from the Kanata Town Centre. 8 minutes to Kanata Centrum Shopping Centre. Bus stop in front of the building.

## LEASING INQUIRY

### John Esposito

Senior Director of Leasing

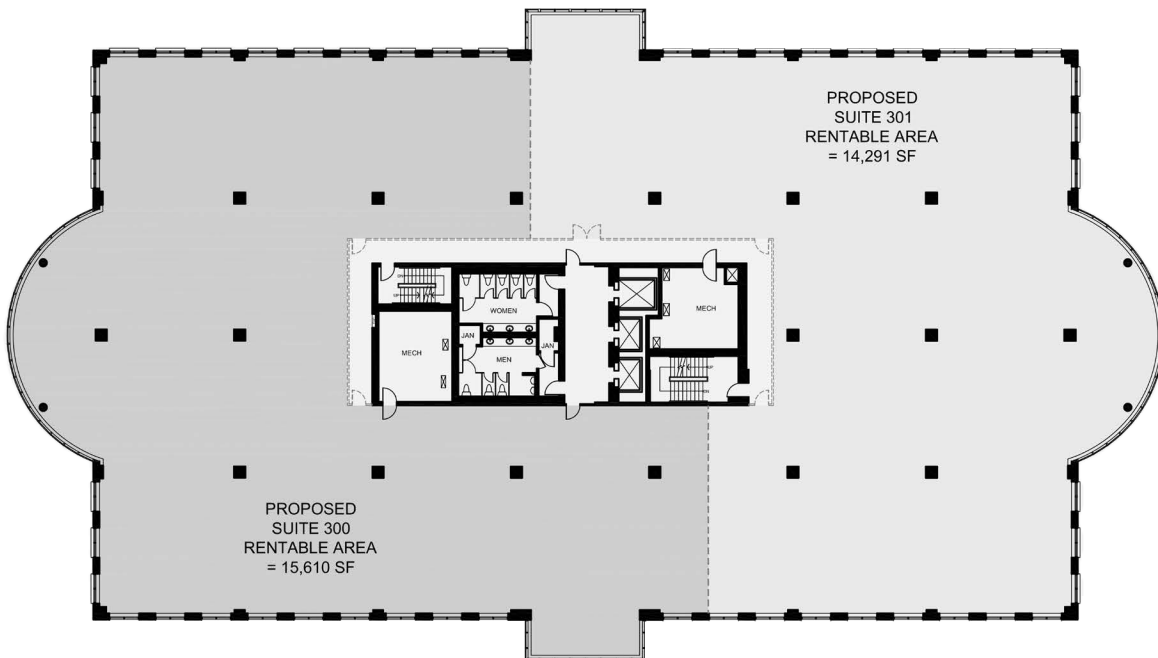
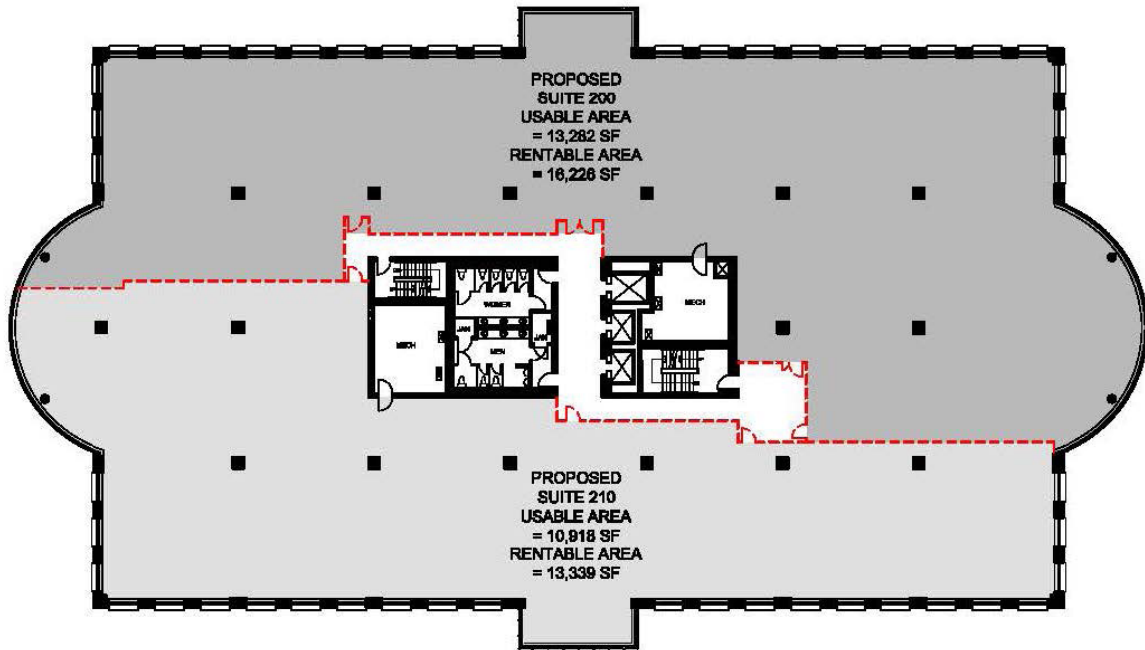
[jesposito@groupemach.com](mailto:jesposito@groupemach.com)

### Max Francischiello, MBA

Senior Vice-President, Leasing

[mfrancischiello@groupemach.com](mailto:mfrancischiello@groupemach.com)

# FLOOR PLAN

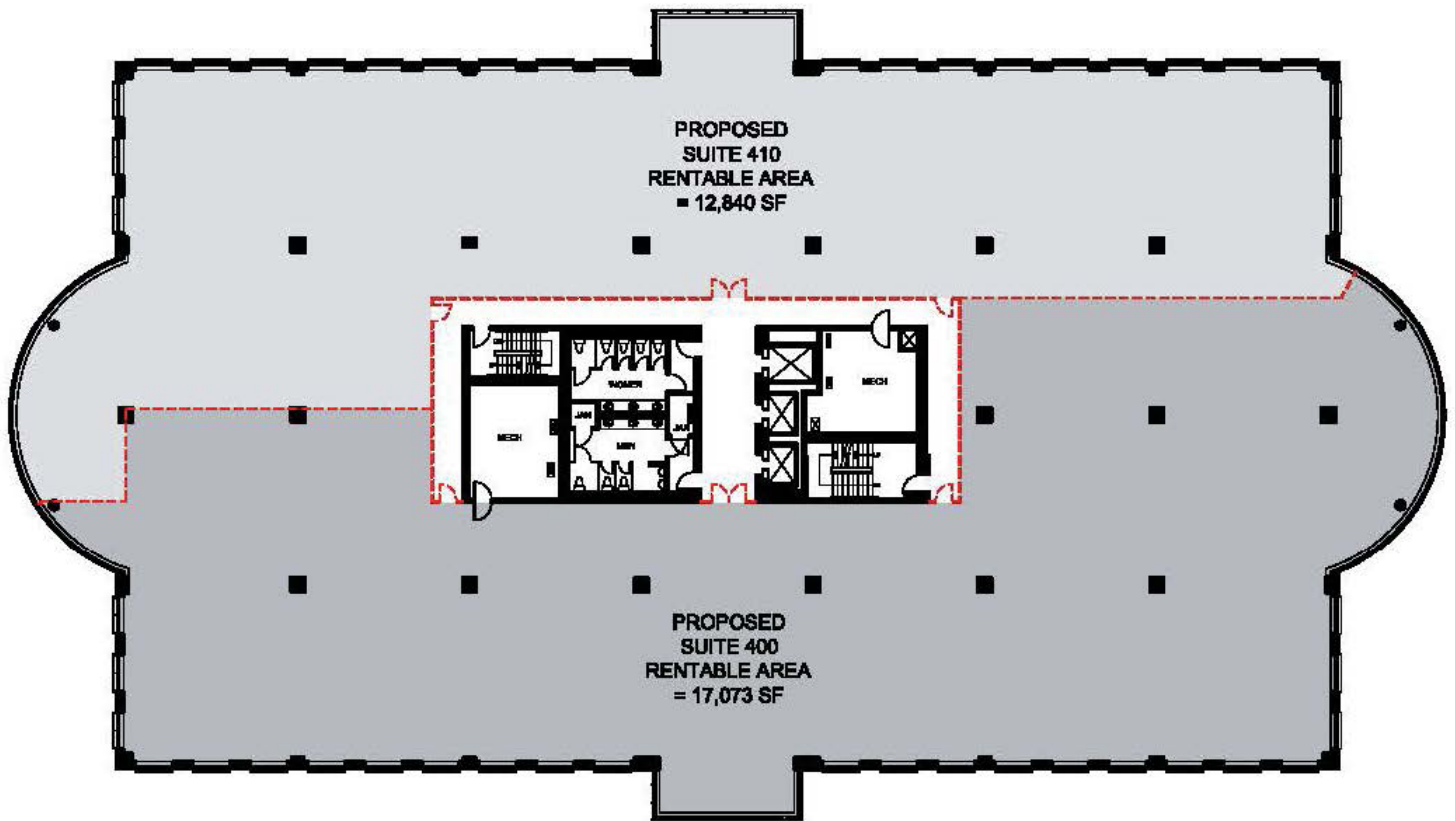


# MACH

groupemach.com | [in](#) | [f](#) | [@](#)

CONTACT US  
FOR LEASING OPPORTUNITIES  
**(613) 565-4848**

# FLOOR PLAN



# MACH

groupemach.com | [in](#) | [f](#) | [@](#)

CONTACT US  
FOR LEASING OPPORTUNITIES  
**(613) 565-4848**