



**CUSHMAN &
WAKEFIELD**

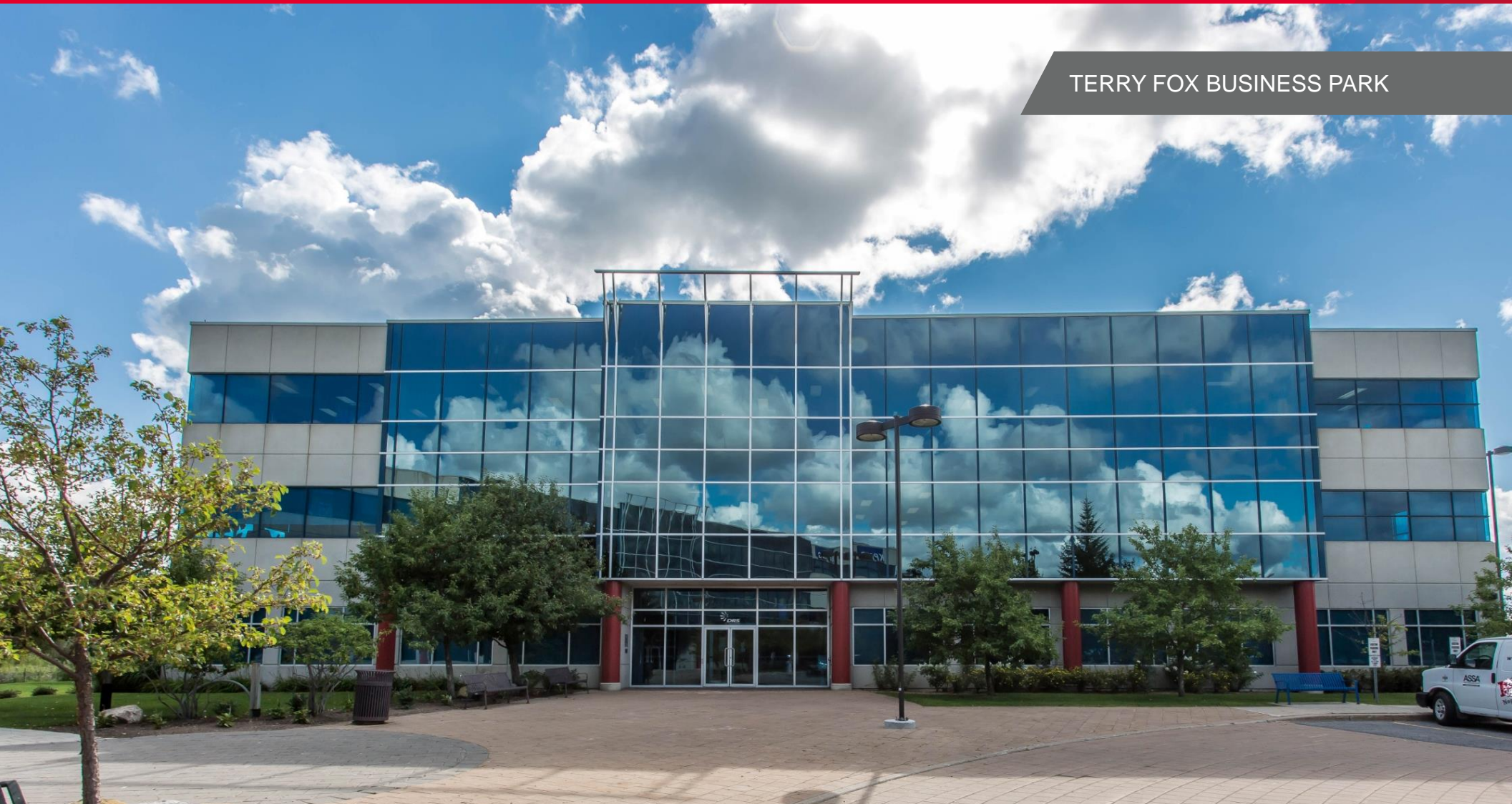
Ottawa

FOR LEASE

700 Palladium Drive

Ottawa, ON

TERRY FOX BUSINESS PARK



Contact information:

Paul Bennett
Senior Vice-President / Broker
+ 613 780 1590
pbennett@cwottawa.com

Doug Tilley
Senior Vice-President / Broker
+ 613 780 1591
dtilley@cwottawa.com

99 Bank Street, Suite 700
Ottawa, ON K1P 6B9
phone: +1 613 236 7777
Fax: + 613 236 5958

Brokerage, Independently Owned & Operated / A Member of the Cushman & Wakefield Alliance

Cushman & Wakefield Copyright 2016. No warranty or representation, express or implied, is made to the accuracy or completeness of the information contained herein, and same is submitted subject to errors, omissions, change of price, rental or other conditions, withdrawal without notice, and to any special listing conditions imposed by the property owner(s). As applicable, we make no representation as to the condition of the property (or properties) in question.



**CUSHMAN &
WAKEFIELD**

Ottawa

FOR LEASE

700 Palladium Drive

Ottawa, ON



TERRY FOX BUSINESS PARK

Property Details

Available Space 49,707 SF (Can be subdivided)

Average Floor Plate 21,000 SF

Rental Rate \$16.00 PSF

Operating Costs \$13.78 PSF (2015)

Term Flexible (Up to 15 years)

Availability Immediate

Parking 1.3:1,000 SF

- Top quality Class A building
- Opportunity to Brand the building with your corporate identity
- Landlord improvement package will allow for customized space
- Existing improvements in place
- Complex contains an impressive lobby with immediate stair access to the second floor leading to a wrap-around balcony overlooking the ground floor
- Window access to 85% of the interior allowing lots of natural light to enter the building
- Shower facilities in building
- Fibre in place
- Campus like setting, enjoy lunch on the patio with outdoor picnic area & gazebo
- Steps away from the Canadian Tire Centre



**CUSHMAN &
WAKEFIELD**

Ottawa

FOR LEASE

700 Palladium Drive

Ottawa, ON



TERRY FOX BUSINESS PARK

Area Amenities

- Easy access to Highway 417
- Amenities nearby such as Bert's Bar, YMCA, East Side Mario's, Kanata Centrum, Tim Horton's, D'Arcy McGee's
- Steps away from the Canadian Tire Centre

Contact information:

Paul Bennett
 Senior Vice-President / Broker
 + 613 780 1590
 pbennett@cwottawa.com

Doug Tilley
 Senior Vice-President / Broker
 + 613 780 1591
 dtilley@cwottawa.com

99 Bank Street, Suite 700
 Ottawa, ON K1P 6B9
 phone: +1 613 236 7777
 Fax: + 613 236 5958

Brokerage, Independently Owned & Operated / A Member of the Cushman & Wakefield Alliance

Cushman & Wakefield Copyright 2016. No warranty or representation, express or implied, is made to the accuracy or completeness of the information contained herein, and same is submitted subject to errors, omissions, change of price, rental or other conditions, withdrawal without notice, and to any special listing conditions imposed by the property owner(s). As applicable, we make no representation as to the condition of the property (or properties) in question.



**CUSHMAN &
WAKEFIELD**

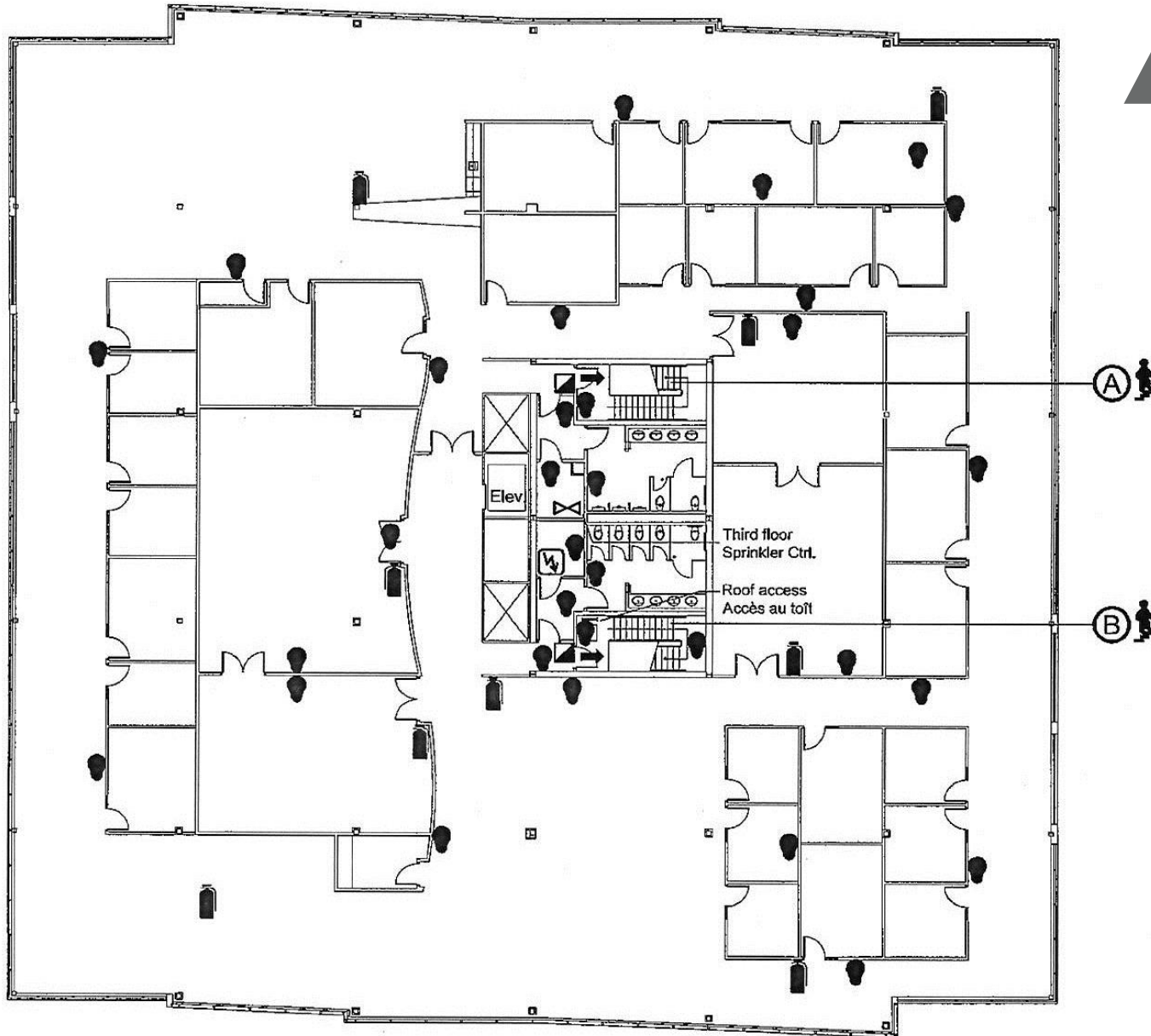
Ottawa

FOR LEASE

700 Palladium Drive

Ottawa, ON

TERRY FOX BUSINESS PARK



3rd Floor fit up “as is”

Contact information:

Paul Bennett
Senior Vice-President / Broker
+ 613 780 1590
pbennett@cwottawa.com

Doug Tilley
Senior Vice-President / Broker
+ 613 780 1591
dtilley@cwottawa.com

99 Bank Street, Suite 700
Ottawa, ON K1P 6B9
+ 613 236 7777

cwottawa.com