



**Bentall
Kennedy**

**Full Floor Leasing
Opportunity Available
up to 15,000 sq ft**

Pearson Corporate Centre 10 - 20 Carlson Court

Etobicoke, Ontario, Canada

The Pearson Corporate Centre is comprised of two Class "A" buildings totaling 316,000 square feet. The complex is surrounded by a host of amenities including restaurants, hotels, conference centres, shopping and financial institutions. It is ideally situated minutes from Pearson International Airport with ready access to major highway arteries.

Available - 10 Carlson Court

- ▶ **Suite 110: 9,178 sq ft - 90 days notice**
- ▶ **Suite 300: 15,205 sq ft - 90 days notice**
- ▶ **Suite 600: 15,203* sq ft - Immediately**

** Suites can be demised from 3,000 sq. ft.*

Rental Rates

- ▶ **Basic Rent: \$16.50 per square foot**
- ▶ **Est. 2011 Additional Rent: \$16.20 per square foot**



PEARSON
CORPORATE CENTRE

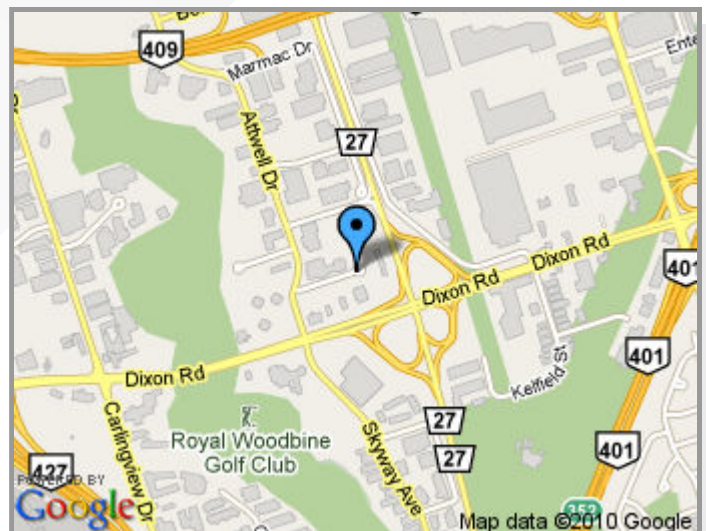
Tracy Macdonald
Vice President, Leasing

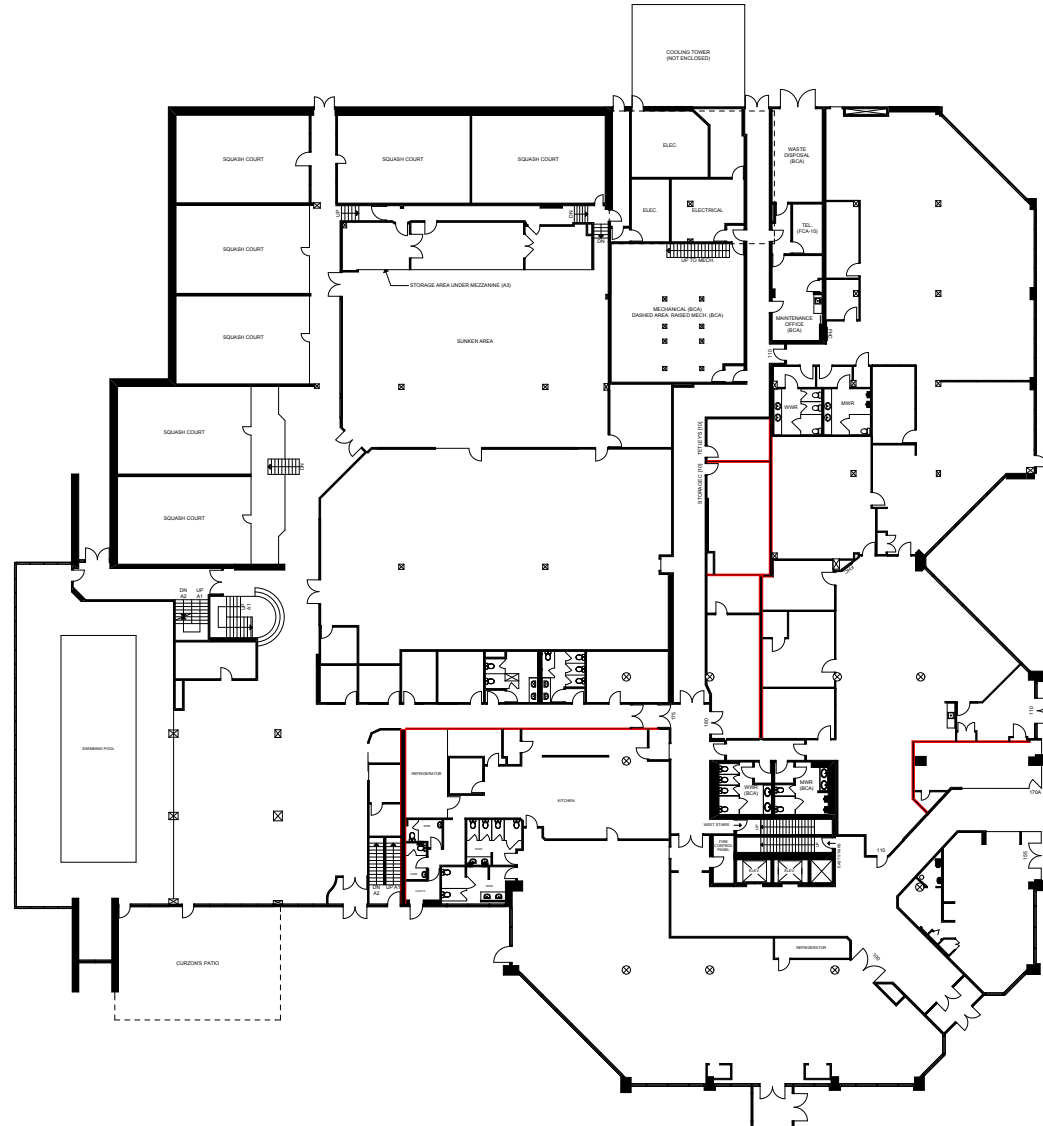
Bentall Kennedy (Canada) LP, Brokerage
Tel: 416-674-3578
Cell: 416-803-9783
Fax: 416-674-7738
Email: tmacdonald@bentallkennedy.com
Web: www.bentallkennedy.com



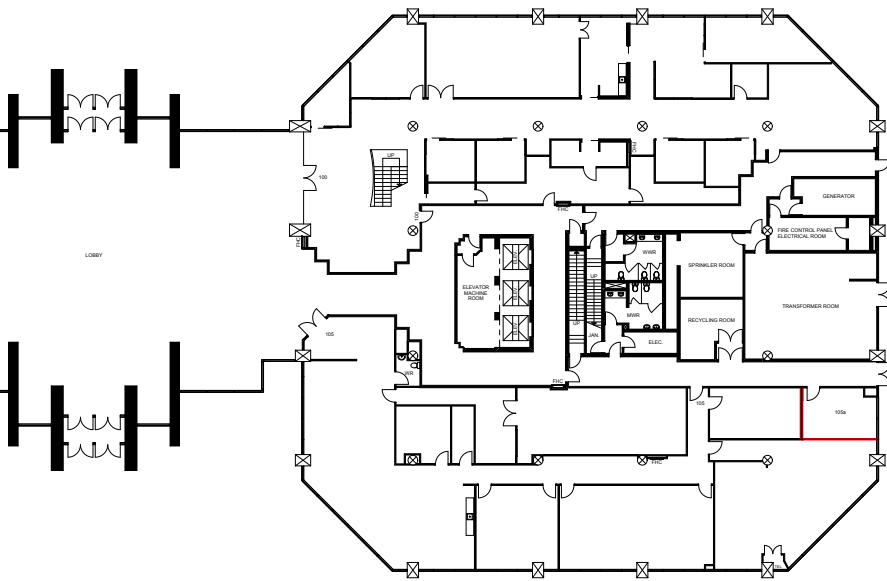
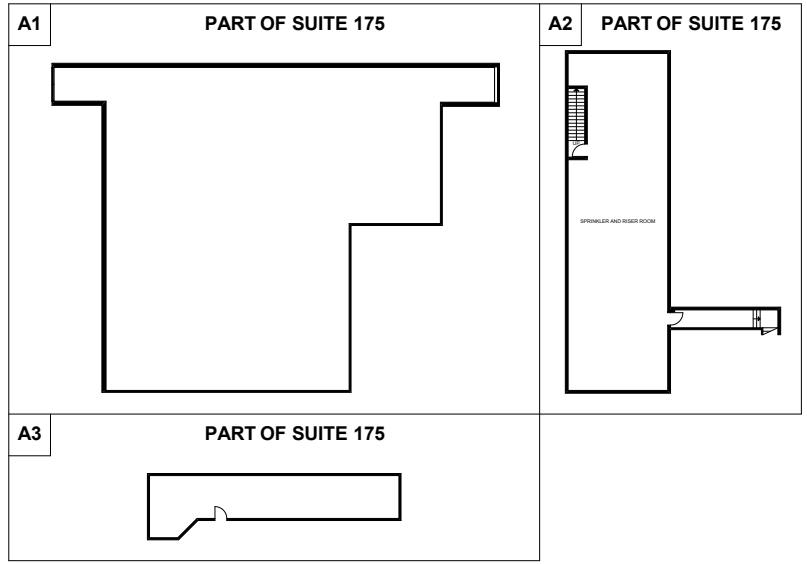
Our foundation is
service

This information has been obtained from sources deemed reliable. All information is subject to change including price, errors, omissions, withdrawal, notice or any other condition with no warranty given to the accuracy.






10 CARLSON COURT



20 CARLSON COURT



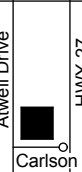
"Client"



Version: *FP8A* Prepared: 07/12/2010
Measured: 03/05/2007

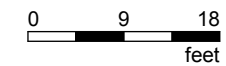
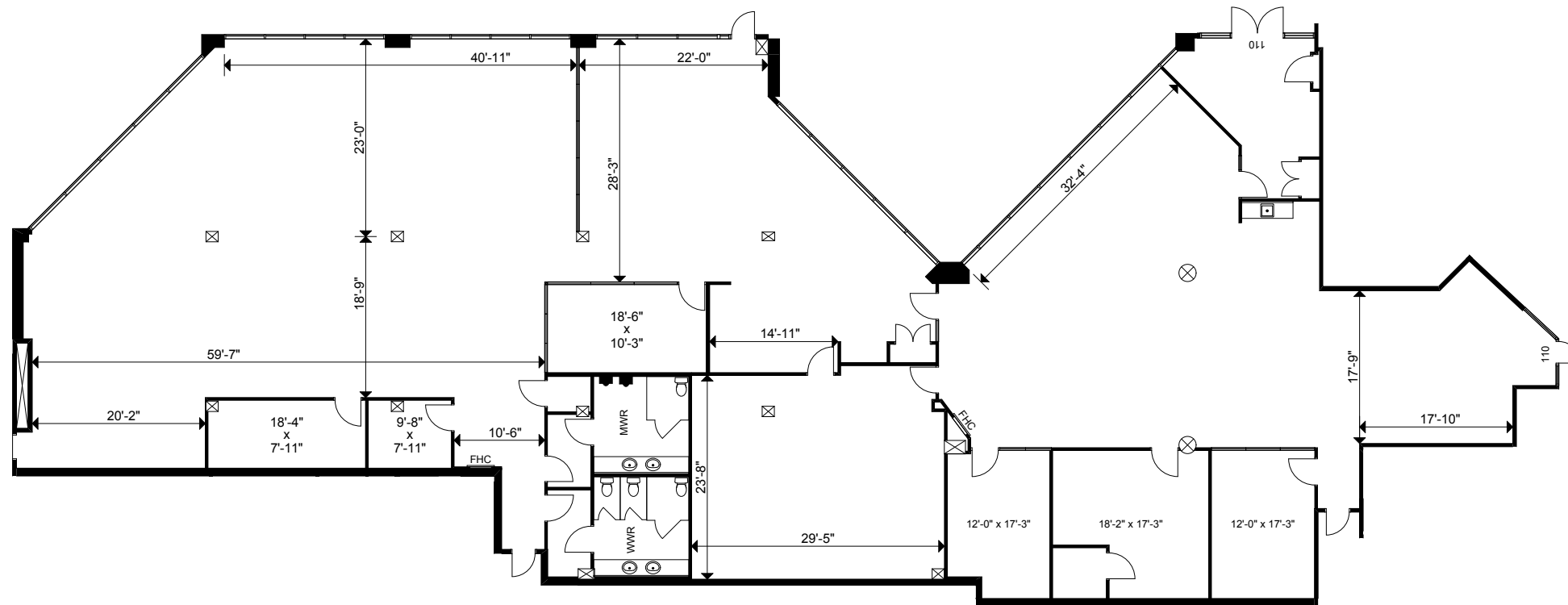
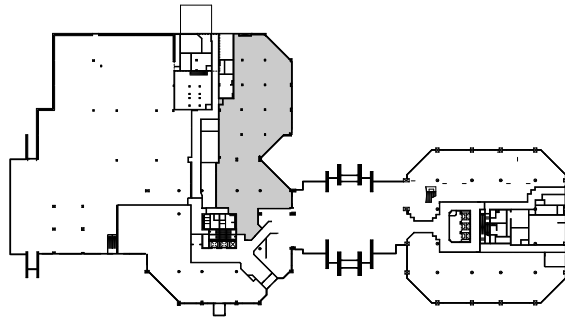
Pearson Corporate Centre
Etobicoke, Ontario
10-20 Carlson Floor 1

Please Refer to Corresponding Area Chart

		Belfield Road	
		HWY 409	
Hwy 427	Atwell Drive	 HWY 27 Carlson Court	Martin Grove Road
		Dixon Road	
			HWY 401

This work product has been prepared by Extreme Measures Inc. pursuant to a contract with the Client for the sole benefit of and use by the Client. No third party may rely on this work product without the receipt of a reliance letter from Extreme Measures Inc.

extreme measures inc. Tel: 416.323.2858
Fax: 416.323.0855
mail@xmeasures.com
www.xmeasures.com



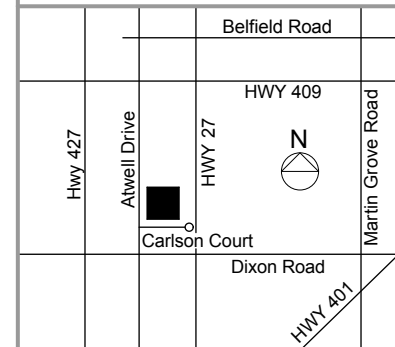
"Client"



Version: V1 Prepared: 07/12/2010
Measured: 03/05/2007

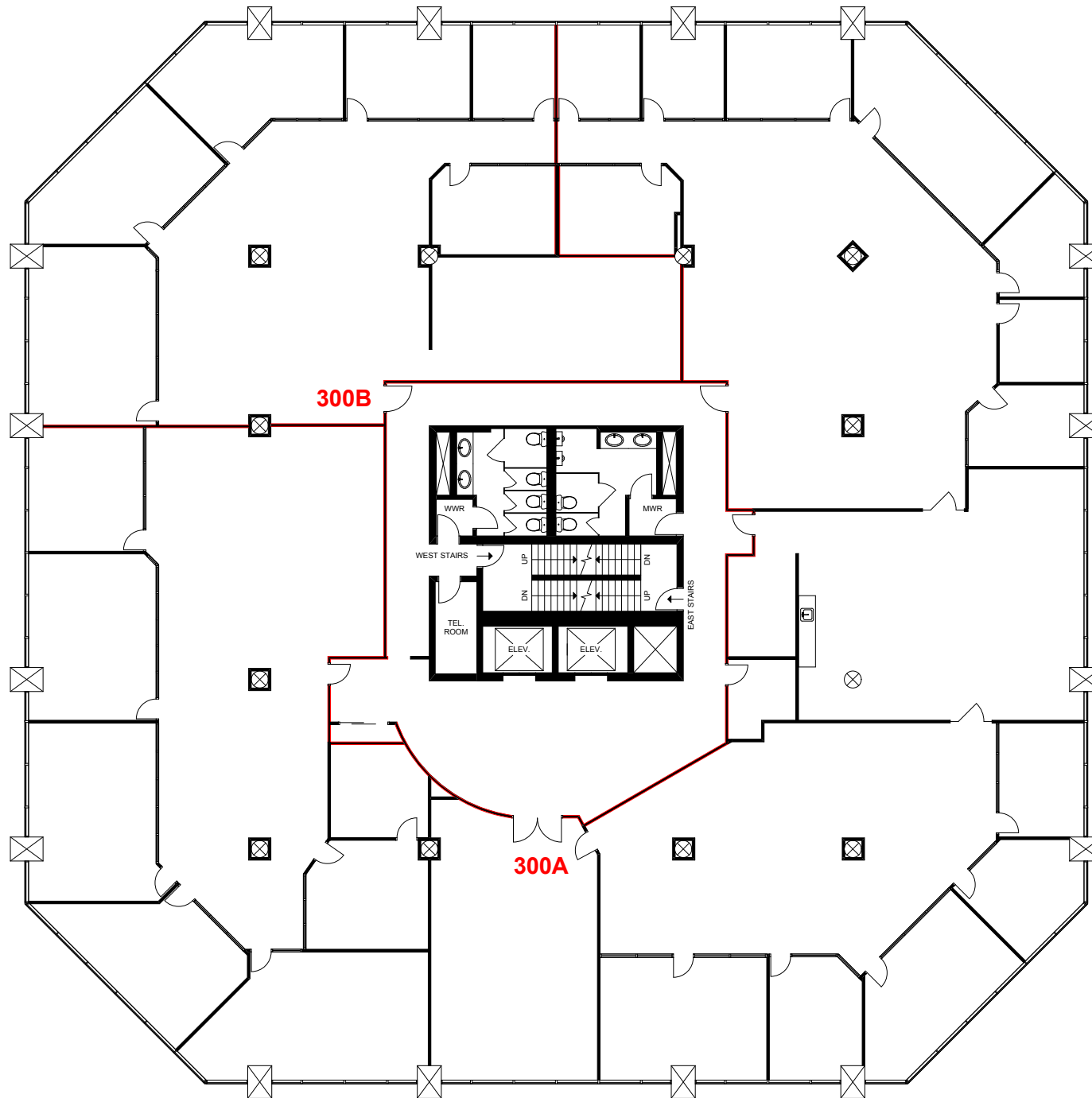
Pearson Corporate Centre
Etobicoke, Ontario
10 Carlson Court
Unit 110

Rentable Area:
9,178 sq ft



This work product has been prepared by Extreme Measures Inc. pursuant to a contract with the Client for the sole benefit of and use by the Client. No third party may rely on this work product without the receipt of a reliance letter from Extreme Measures Inc.

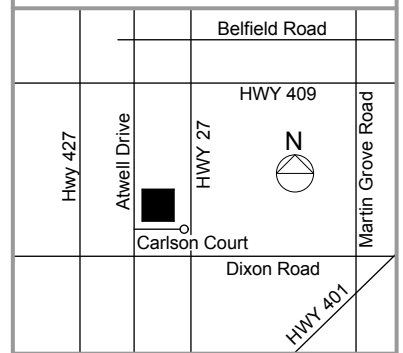
extreme measures inc. Tel: 416.323.2858
Fax: 416.323.0855
mail@xmeasures.com
www.xmeasures.com



Version:	Prepared: 07/12/2010
FP2A	Measured: 31/05/2002

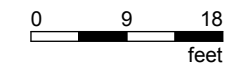
**Pearson Corporate
Centre**
Etobicoke, Ontario
**10 Carlson Court
Floor 3**

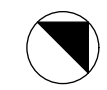
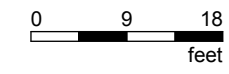
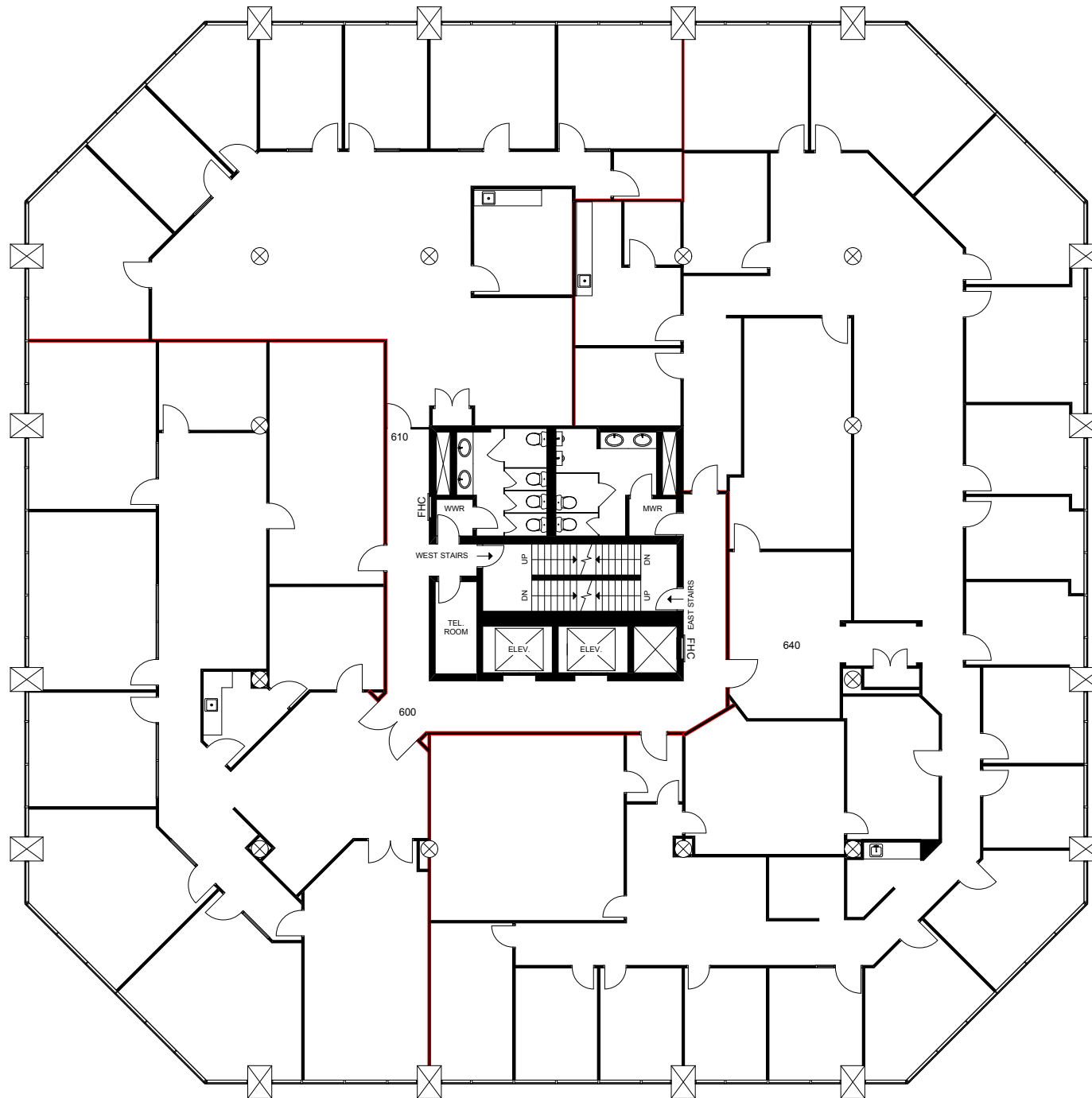
*Please Refer to
Corresponding Area Chart*



This work product has been prepared by Extreme Measures Inc. pursuant to a contract with the Client for the sole benefit of and use by the Client. No third party may rely on this work product without the receipt of a reliance letter from Extreme Measures Inc.

This work product or portions thereof relies upon information provided by the Client and/or from third parties introduced by the Client that has not been independently verified by Extreme Measures Inc. Extreme Measures Inc. is not liable for any errors, omissions or inaccuracies that may result from such information.





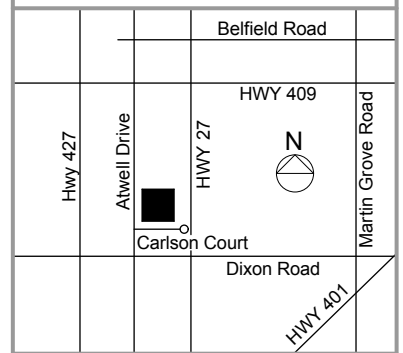
"Client"



Version: **FP3B** Prepared: 07/12/2010
 Measured: 24/10/2007

Pearson Corporate Centre
 Etobicoke, Ontario
10 Carlson Court
Floor 6

Please Refer to Corresponding Area Chart



This work product has been prepared by Extreme Measures Inc. pursuant to a contract with the Client for the sole benefit of and use by the Client. No third party may rely on this work product without the receipt of a reliance letter from Extreme Measures Inc.

This work product or portions thereof relies upon information provided by the Client and/or from third parties introduced by the Client that has not been independently verified by Extreme Measures Inc. Extreme Measures Inc. is not liable for any errors, omissions or inaccuracies that may result from such information.

extreme measures inc. Tel: 416.323.2858
 Fax: 416.323.0855
 mail@xmeasures.com
 www.xmeasures.com