

Demcor Tower

239 10th Avenue SE



Property Information

PAGE 2

About the Building

PAGE 3

Floor Plans & Photos

PAGE 4-5

Nearby Amenities

PAGE 6

ALLIED CBRE

Property Information



Located in the Beltline



5 minute walk from downtown



Character building



Walking distance to Victoria Park / Stampede LRT Station

Year Built: 1906

Space Available: Suite 302: 3,000 SF [Virtual Tour](#) 

Available Date: Immediately

Additional Rent: \$16.20 PSF

Basic Rent: Market

Parking: 1 stall per 829 SF // \$250.00 per month
Suite 302: 3 stalls



About the Building

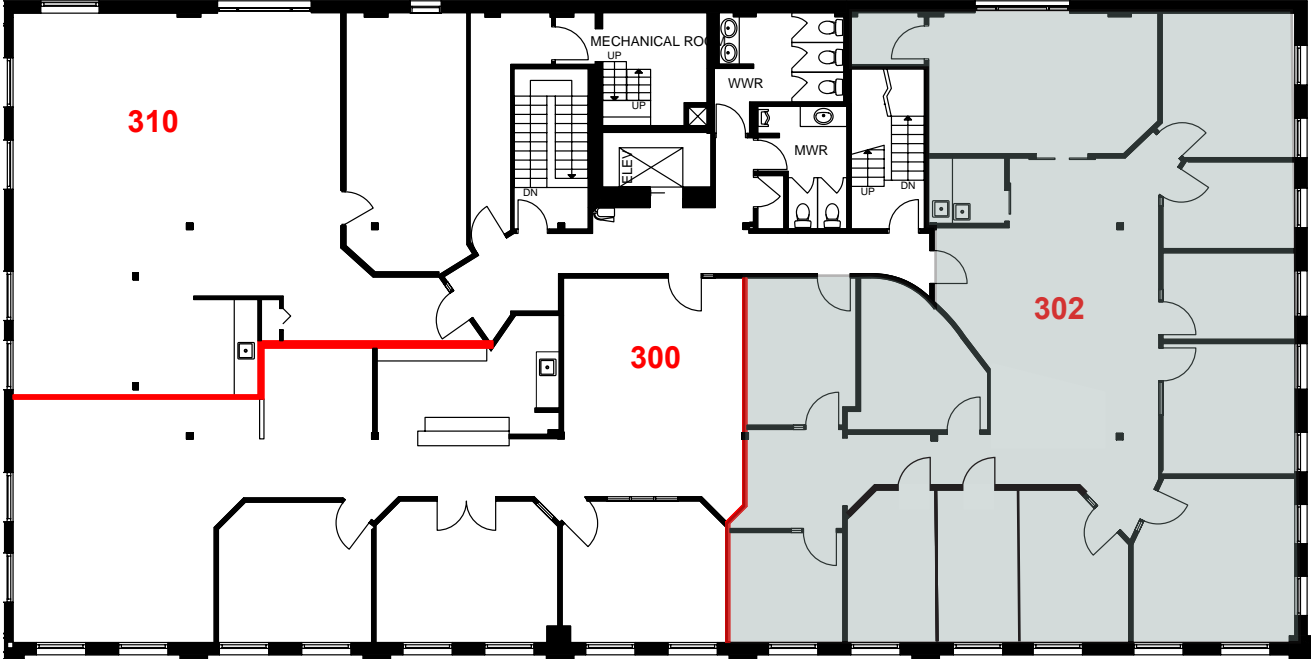
The Demcor Tower was built in 1906 by the well-known agricultural equipment and automobile sales agency- Tudhope Anderson Co. Building. They then occupied the space from 1906 to 1921.

Considered the oldest extant warehouse in Calgary, it was one of twenty-three wholesale implements and machinery warehouses promoted by civic boosters in 1909.

Among the first recycled warehouse buildings, the structure is recognizable for its adaptive re-use in the early 1980s. As the distribution of goods throughout the West depended upon the railway, the pattern of wholesale development in Calgary was determined by the location of the C.P.R freight yards.



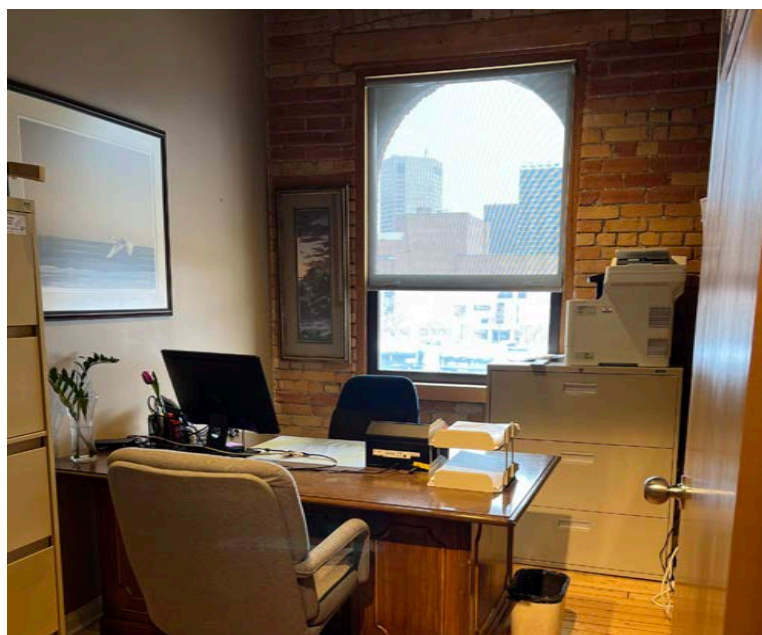
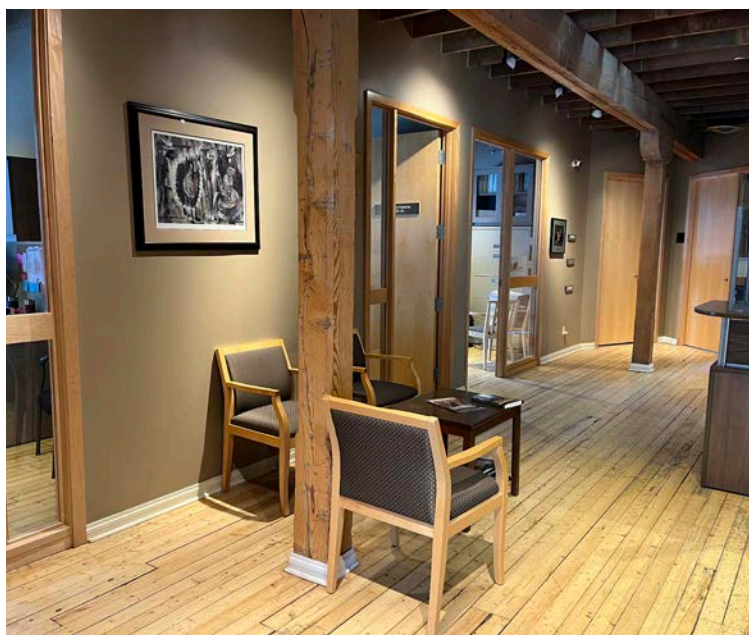
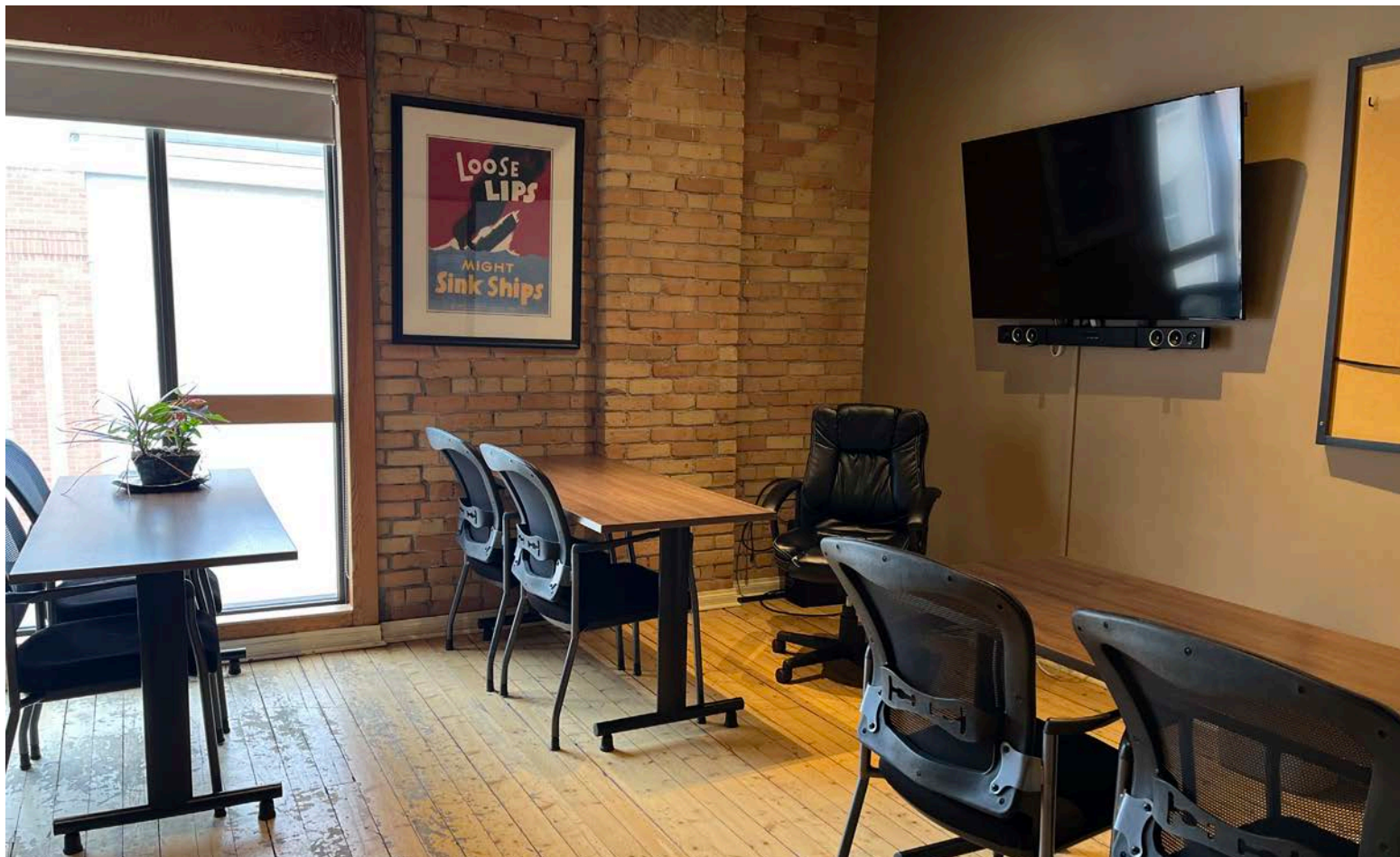
Suite 302- 3,000 SF



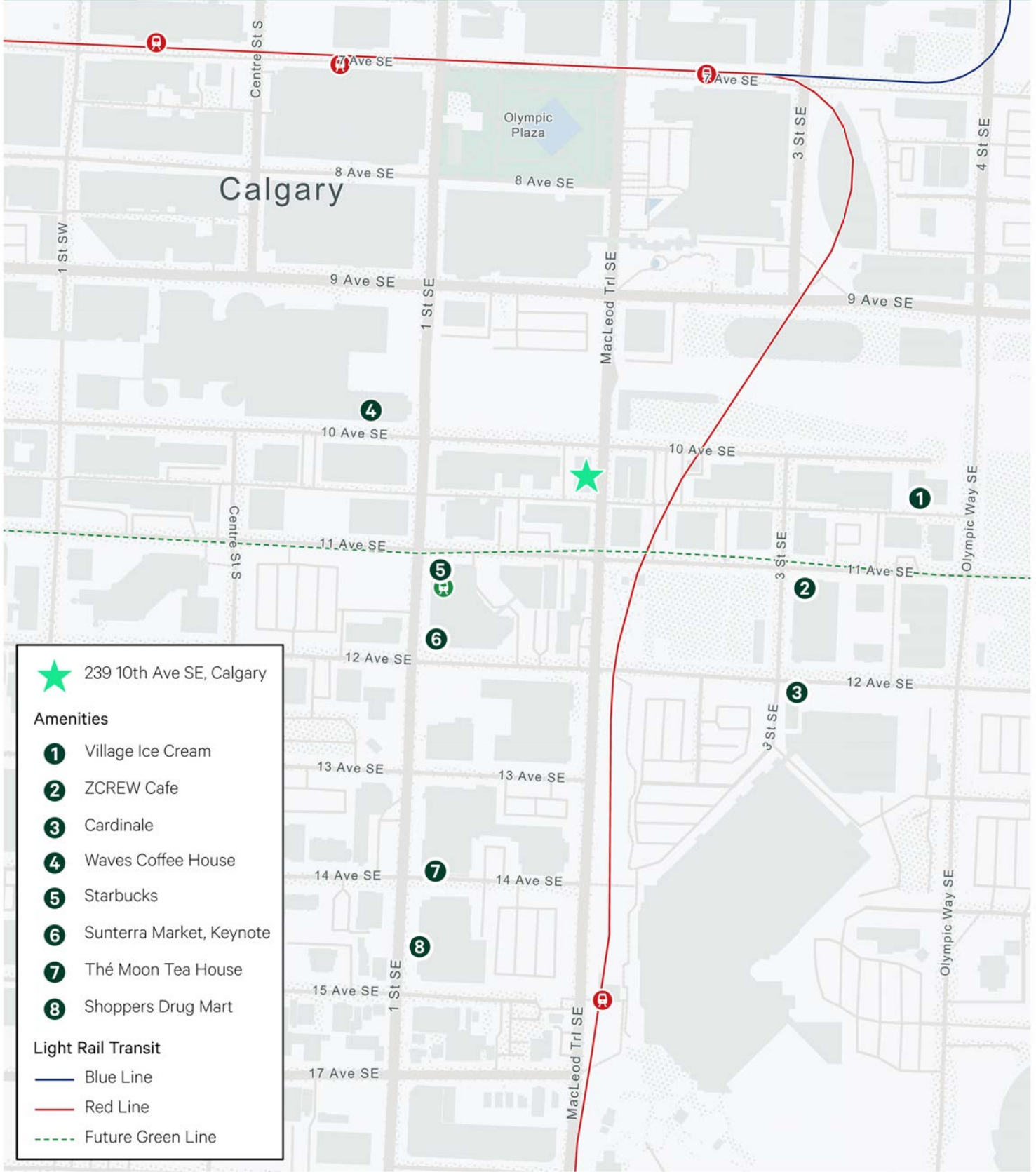
*Furniture is not included



Suite 302- 3,000 SF



*Furniture is not included



 239 10th Ave SE, Calgary

Amenities

-  Village Ice Cream
-  ZCREW Cafe
-  Cardinale
-  Waves Coffee House
-  Starbucks
-  Sunterra Market, Keynote
-  Thé Moon Tea House
-  Shoppers Drug Mart

Light Rail Transit

-  Blue Line
-  Red Line
-  Future Green Line

For more information, please contact

Stuart Watson

Senior Vice President
 T 403 750 0540
 stuart.watson@cbre.com

Katie Sapieha

Vice President
 T 403 750 0529
 katie.sapieha@cbre.com

CBRE

This disclaimer shall apply to CBRE Limited, and to all divisions of the Corporation ("CBRE"). The information set out herein (the "Information") has not been verified by CBRE, and CBRE does not represent, warrant or guarantee the accuracy, correctness and completeness of the Information. CBRE does not accept or assume any responsibility or liability, direct or consequential, for the Information or the recipient's reliance upon the Information. The recipient of the Information should take such steps as the recipient may deem necessary to verify the Information prior to placing any reliance upon the Information. The Information may change and any property described in the Information may be withdrawn from the market at any time without notice or obligation to the recipient from CBRE.