

Glenbow Building

822 11th Ave SW
Calgary, AB



Property Highlights

PAGE 2

Floor Plan

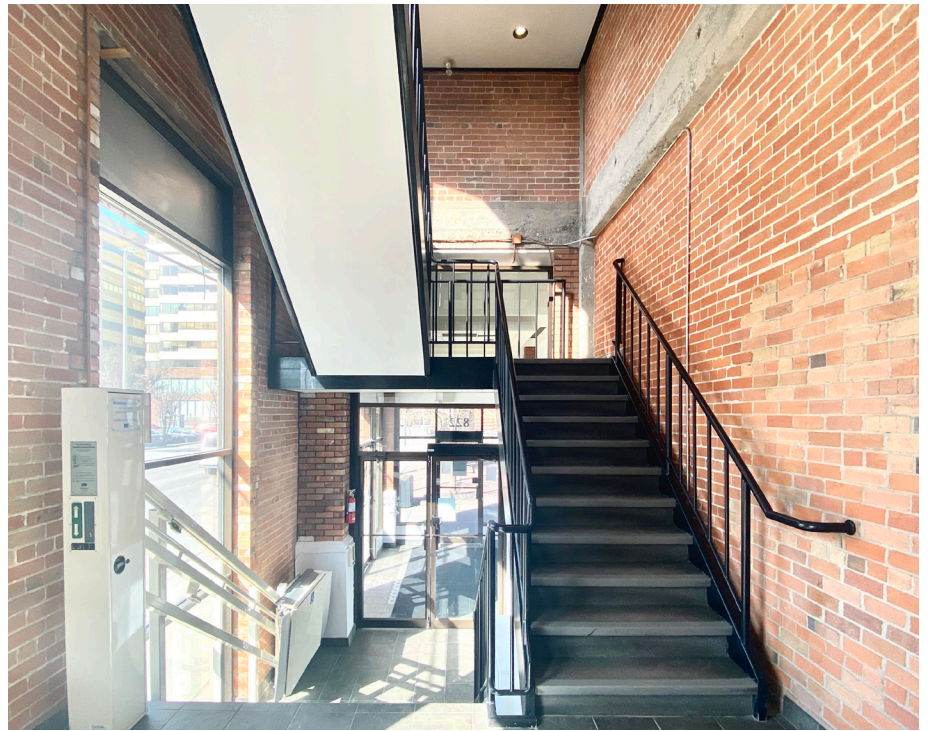
PAGE 3

Local Amenities

PAGE 4

ALLIED CBRE

Property Highlights



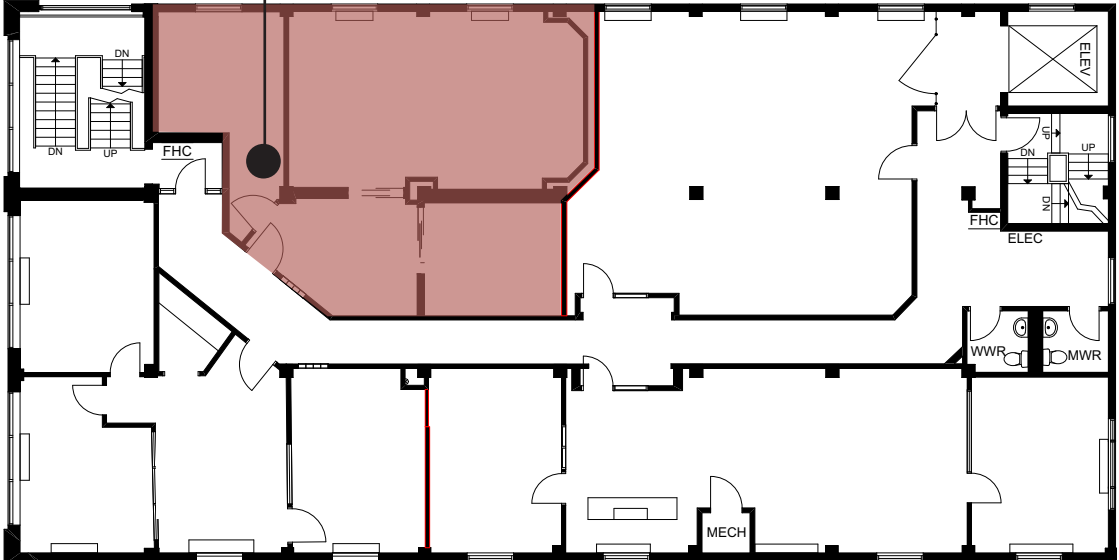
Year Built	1921
Rent	Market
Additional Rent	\$17.65
Area Available	Suite 201: 1,242 SF
Availability	Immediately

- Restored character brick and beam space with high ceilings
- Immediate proximity to amenities including Bonterra, Posto Pizzeria, Bridgette Bar and Sucre Cafe
- Central Beltline location
- Within walking distance to Downtown Core
- 10 minute walk to 7th Street LRT Station

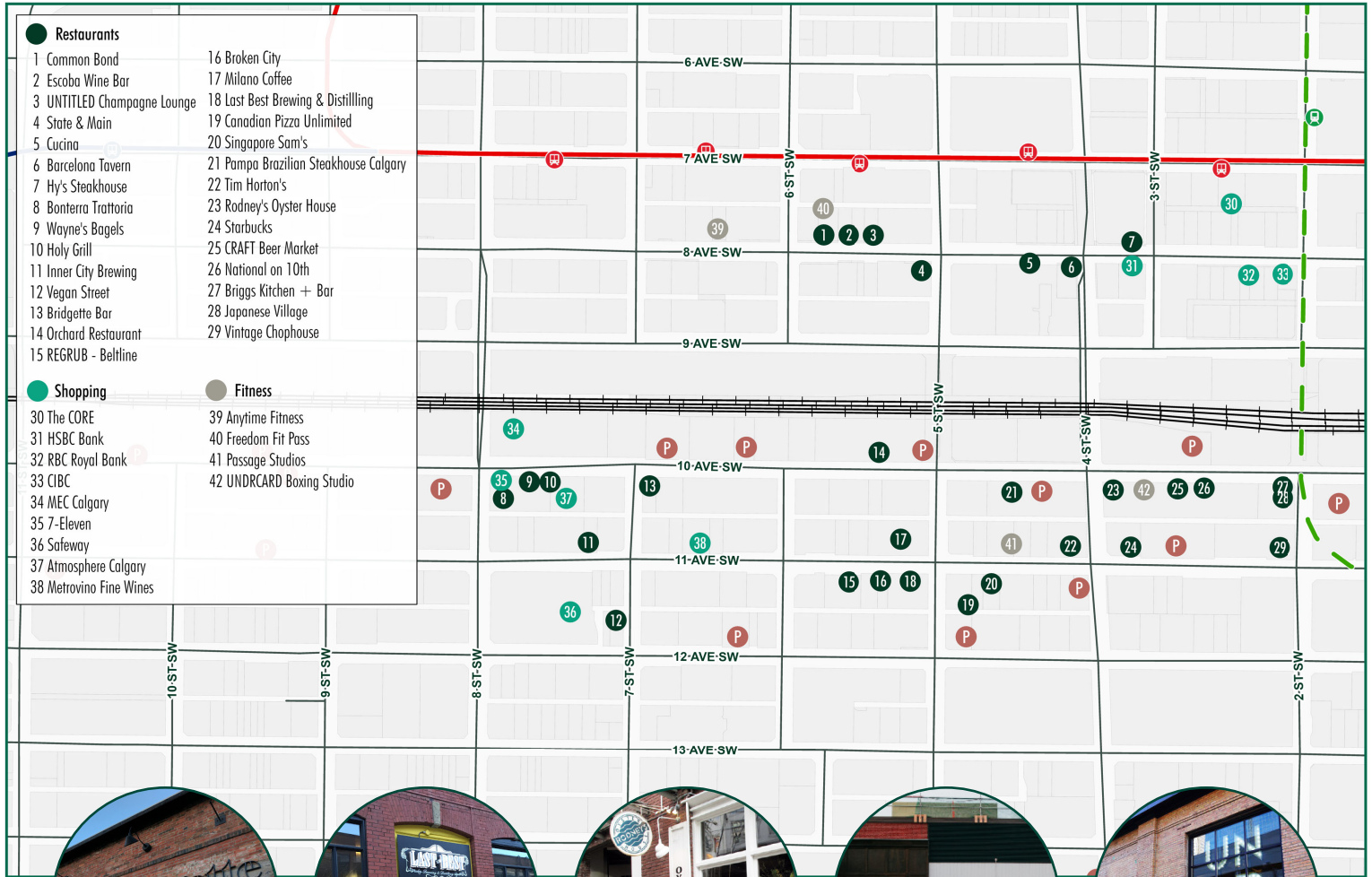
Floor Plan

Suite 201

Suite 201
1,242 SF



Local Amenities



13. Bridgette Bar



18. Last Best Brewing



23. Rodney's Oyster House



25. CRAFT Beer Market



42. UNDRCARD Boxing

This disclaimer shall apply to CBRE Limited, Real Estate Brokerage, and to all other divisions of the Corporation; to include all employees and independent contractors ("CBRE"). The information set out herein, including, without limitation, any projections, images, opinions, assumptions and estimates obtained from third parties (the "Information") has not been verified by CBRE, and CBRE does not represent, warrant or guarantee the accuracy, correctness and completeness of the Information. CBRE does not accept or assume any responsibility or liability, direct or consequential, for the Information or the recipient's reliance upon the Information. The recipient of the Information should take such steps as the recipient may deem necessary to verify the Information prior to placing any reliance upon the Information. The Information may change and any property described in the Information may be withdrawn from the market at any time without notice or obligation to the recipient from CBRE. CBRE and the CBRE logo are the service marks of CBRE Limited and/or its affiliated or related companies in other countries. All other marks displayed on this document are the property of their respective owners. All Rights Reserved.

STUART WATSON
Senior Vice President
stuart.watson@cbre.com
403 750 0540

KATIE SAPIEHA
Vice President
katie.sapieha@cbre.com
403 750 0529

ALLIED CBRE