

22,369 SF LEASED IN 2022



Starting at
\$12.50
PSF

WAYNE SATO

WAYNE SATO PERSONAL REAL ESTATE CORPORATION

Sales and Leasing Executive

c. 204-510-3311

o. 204-957-0500

wayne@waynesato.ca

www.waynesato.ca

FOR LEASE | 1313 BORDER STREET

Multiple Options Available in a Professional Business Park

Border Place is one of the largest professional business centers located in the heart of St James, at 1313 Border Street. Border Place is ideal if you are a business looking for economical office space. A wide variety of finished office spaces, ranging in size from 800 sf up to 7,000 sf are currently available.



Scan QR code to
view website

**RE/MAX
PROFESSIONALS**

1601 Buffalo Place

Winnipeg, MB R3T 3K7

o. 204-957-0500

f. 204-452-4359

wpgproperty.ca

RE/MAX
COMMERCIAL

Property Highlights



Professional Office Space in St James Industrial

If your needs include ample parking, Border Place has one of the largest parking ratios in the St James area at 1 stall for every 225 square feet of rented office space. Staff and visitors will enjoy free parking at Border Place and many stalls have plug in availability.

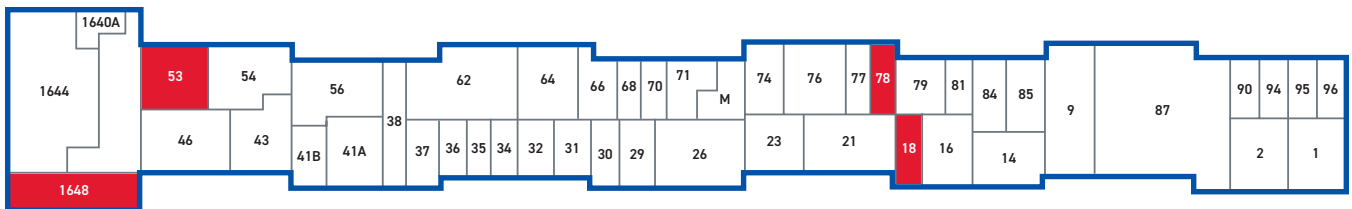
Access to and from Border Place is convenient for both drivers and users of public transit.

- Finished professional offices from 800 to 7,000 sf
- Flexible terms
- 276 parking stalls on site
- On-site restaurant
- Professional space planning available
- Good Winnipeg Transit connection. Express route stops in front of building

Units & Site Plan

SUITE	SQUARE FEET (±)	LEASE RATE	CAM & Tax (2022 est.)	AVAILABILITY DATE
16	2,200	\$12.50	\$10.16	LEASED
18	1,100	\$12.50	\$10.16	Immediate
21	3,128	\$12.50	\$10.16	LEASED
23	2,025	\$12.50	\$10.16	LEASED
53	2,375	\$12.50	\$10.16	Immediate
68	855	\$12.50	\$10.16	LEASED
71	1,380	\$12.50	\$10.16	LEASED
76	2,676	\$12.50	\$10.16	LEASED
77	1,128	\$12.50	\$10.16	LEASED
78	990	\$12.50	\$10.16	Immediate
79	1,725	\$12.50	\$10.16	LEASED
**81	921 Unit can be combined for a total of 3,122 SF	\$12.50	\$10.16	LEASED
1640-A	960	\$12.50	\$10.16	LEASED
1648	3,100	See Agent	\$10.16	See Agent

*Management fee of 5% of total net rent



○ Leased ● Available

This information has been obtained from sources believed to be reliable but has not been verified. NO WARRANTY OR REPRESENTATION, EXPRESS OR IMPLIED, IS MADE AS TO THE CONDITION OF THE PROPERTY (OR PROPERTIES) REFERENCED HEREIN OR AS TO THE ACCURACY OR COMPLETENESS OF THE INFORMATION CONTAINED HEREIN, AND SAME IS SUBMITTED SUBJECT TO ERRORS, OMISSIONS, CHANGE OF PRICE, RENTAL OR OTHER CONDITIONS, WITHDRAWAL WITHOUT NOTICE, AND TO ANY SPECIAL LISTING CONDITIONS IMPOSED BY THE PROPERTY OWNER(S). ANY PROJECTIONS, OPINIONS OR ESTIMATES ARE SUBJECT TO UNCERTAINTY AND DO NOT SIGNIFY CURRENT OR FUTURE PROPERTY PERFORMANCE. Wayne Sato Personal Real Estate Corporation, RE/MAX Professionals / Each office is independently owned and operated.

1313
BORDER
STREET

RE/MAX
COMMERCIAL®



The Area



Convenient location



Food and Drink within nearby



Groceries and Shopping



Amenities nearby

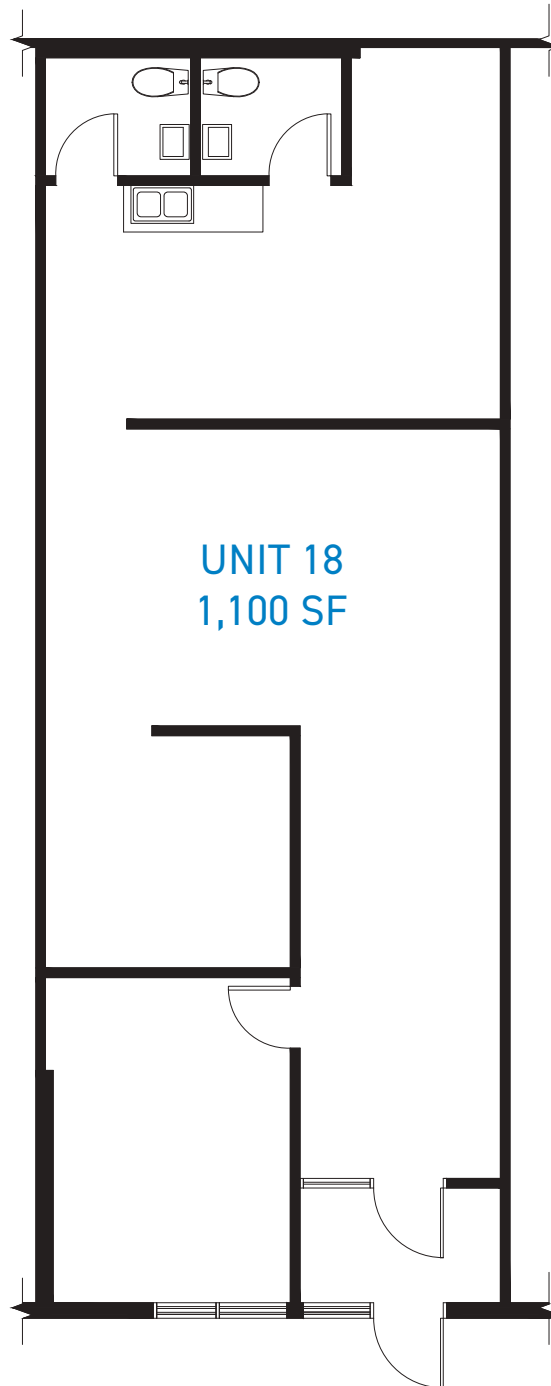


Some bike infrastructure

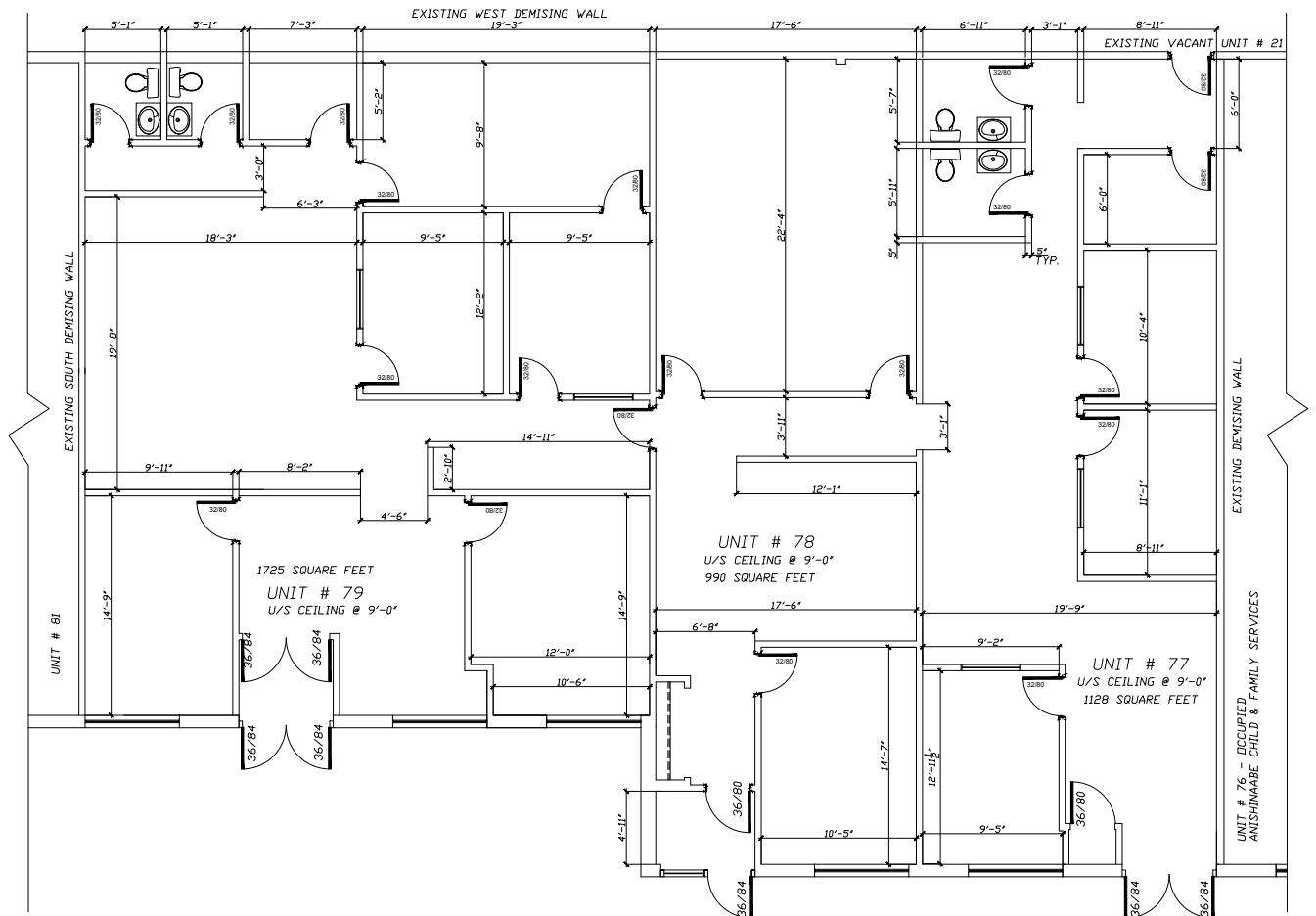


Excellent bus service





UNIT 70-77



This information has been obtained from sources believed to be reliable but has not been verified. NO WARRANTY OR REPRESENTATION, EXPRESS OR IMPLIED, IS MADE AS TO THE CONDITION OF THE PROPERTY (OR PROPERTIES) REFERENCED HEREIN OR AS TO THE ACCURACY OR COMPLETENESS OF THE INFORMATION CONTAINED HEREIN, AND SAME IS SUBMITTED SUBJECT TO ERRORS, OMISSIONS, CHANGE OF PRICE, RENTAL OR OTHER CONDITIONS, WITHDRAWAL WITHOUT NOTICE, AND TO ANY SPECIAL LISTING CONDITIONS IMPOSED BY THE PROPERTY OWNER(S). ANY PROJECTIONS, OPINIONS OR ESTIMATES ARE SUBJECT TO UNCERTAINTY AND DO NOT SIGNIFY CURRENT OR FUTURE PROPERTY PERFORMANCE. Wayne Sato Personal Real Estate Corporation, RE/MAX Professionals / Each office is independently owned and operated.



CONTACT:

WAYNE SATO

WAYNE SATO PERSONAL REAL ESTATE CORPORATION

Sales and Leasing Executive

c. 204-510-3311

o. 204-957-0500

wayne@waynesato.ca

www.waynesato.ca



Scan QR code
to view website

This information has been obtained from sources believed to be reliable but has not been verified. NO WARRANTY OR REPRESENTATION, EXPRESS OR IMPLIED, IS MADE AS TO THE CONDITION OF THE PROPERTY (OR PROPERTIES) REFERENCED HEREIN OR AS TO THE ACCURACY OR COMPLETENESS OF THE INFORMATION CONTAINED HEREIN, AND SAME IS SUBMITTED SUBJECT TO ERRORS, OMISSIONS, CHANGE OF PRICE, RENTAL OR OTHER CONDITIONS, WITHDRAWAL WITHOUT NOTICE, AND TO ANY SPECIAL LISTING CONDITIONS IMPOSED BY THE PROPERTY OWNER(S). ANY PROJECTIONS, OPINIONS OR ESTIMATES ARE SUBJECT TO UNCERTAINTY AND DO NOT SIGNIFY CURRENT OR FUTURE PROPERTY PERFORMANCE. Wayne Sato Personal Real Estate Corporation, RE/MAX Professionals / Each office is independently owned and operated.



1601 Buffalo Pl | Winnipeg, MB | R3T 3K7 | o. 204-957-0500 | f. 204-452-4359 | wpgproperty.ca