

100 Street Place

Quality, move-in-ready office space,
ideally located along Rice Howard Way

10150 100 Street NW
Edmonton, AB

NEW! Modernized Lobby Area



MAIN FLOOR AMENITIES

100 Street Place

10150 100 Street NW | Edmonton, AB



Modernized lobby area



Leasing Details

Lease Rates	Contact agent
Operating Costs	\$16.25 / SF (2023)
Surrounding Parkades	See <i>Parking Map</i>
TIA	Suite dependent - <i>contact agent</i>

Availability

Suite 200	3,226 SF	Move-in-ready
Suite 201	1,945 SF	Ready for TIs
Suite 440	1,976 SF	Move-in-ready
Suite 500	5,200 SF	Show suite
Suite 710	801 SF	Ready for TIs
Suite 870	1,254 SF	Move-in-ready
Suite 880	687 SF	Move-in-ready

Highlights



Professional building management by Melcor REIT



Prime location on trendy Rice Howard Way & facing new Centennial Plaza Park!
**see amenities map*



Direct access to LRT and major bus routes



Ideal location for a law office, close to the courthouse



Main floor retail shopping & Rosewood Foods dinette



Competitive downtown lease rates



Exterior building signage opportunities



SUITE 200



SUITE 200

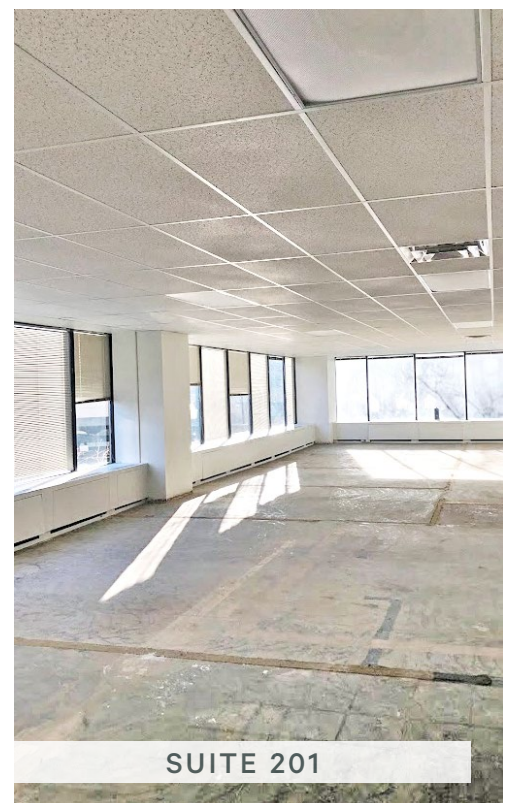
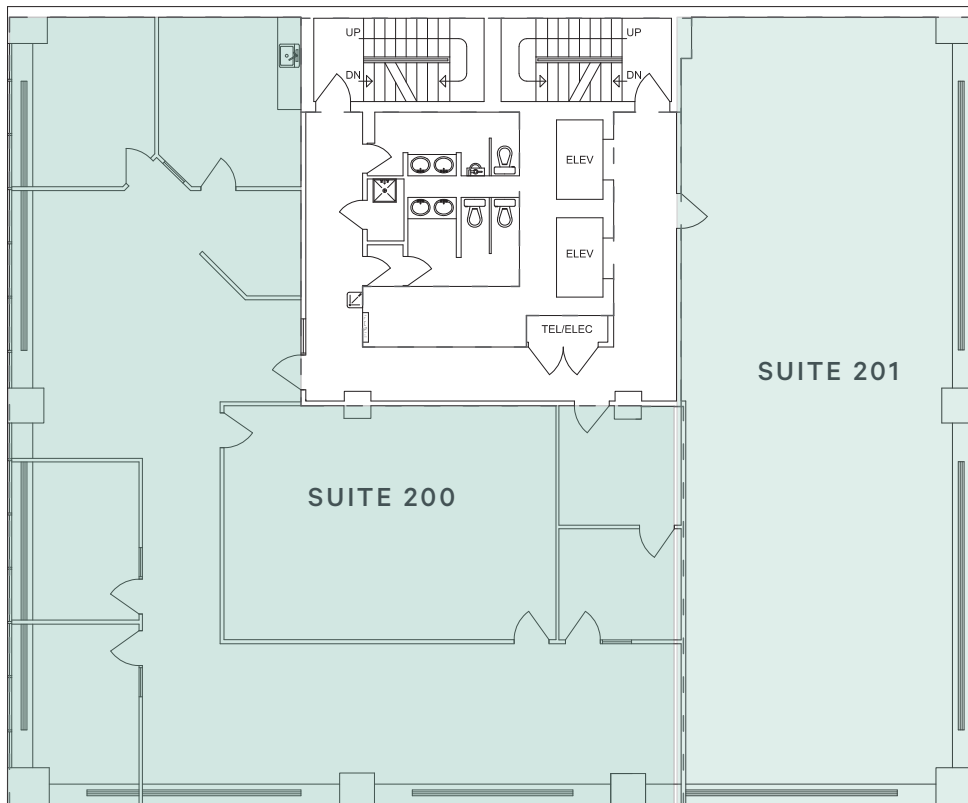
SECOND FLOOR

SUITE 200 | 3,226 SF

- + 5 private offices
- + Reception / open work area
- + Large Boardroom / training room
- + Kitchenette
- + Move-in-ready

SUITE 201 | 1,945 SF

- + Open space
- + Ready for TIs



SUITE 201

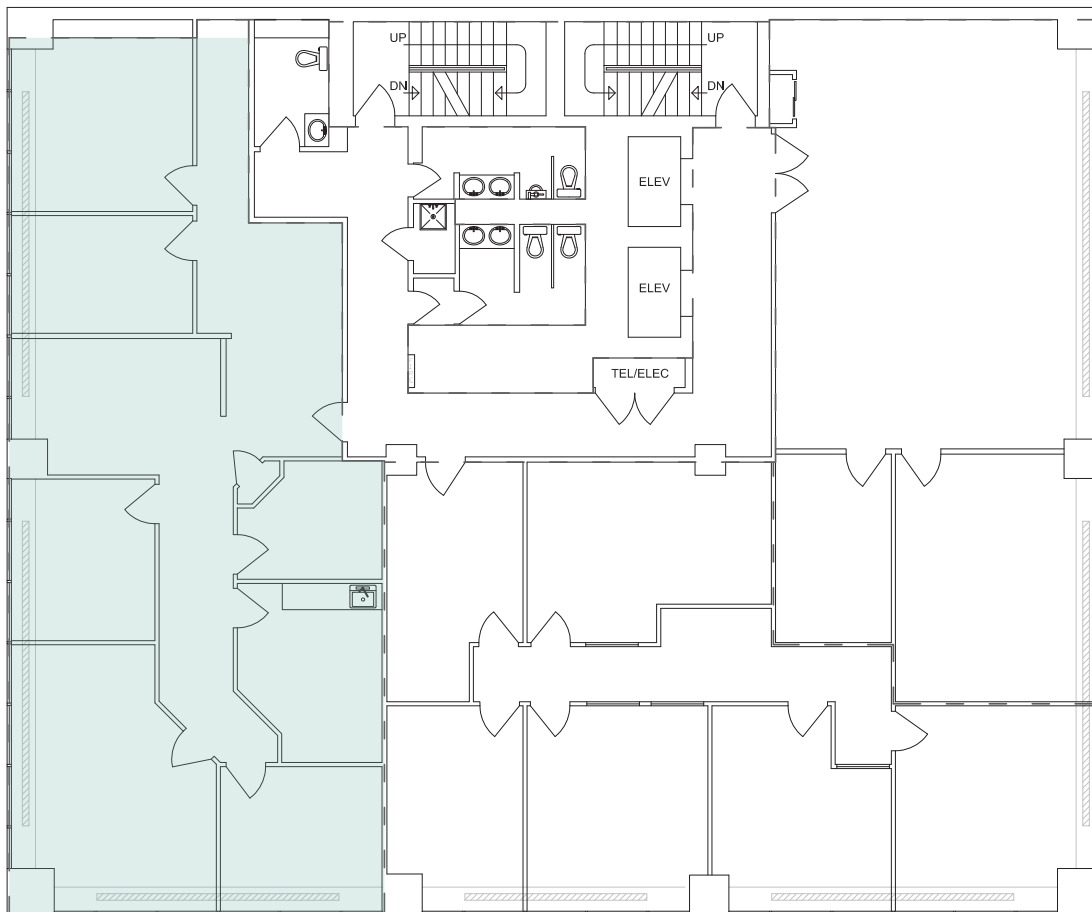
100 Street Place

10150 100 Street NW | Edmonton, AB

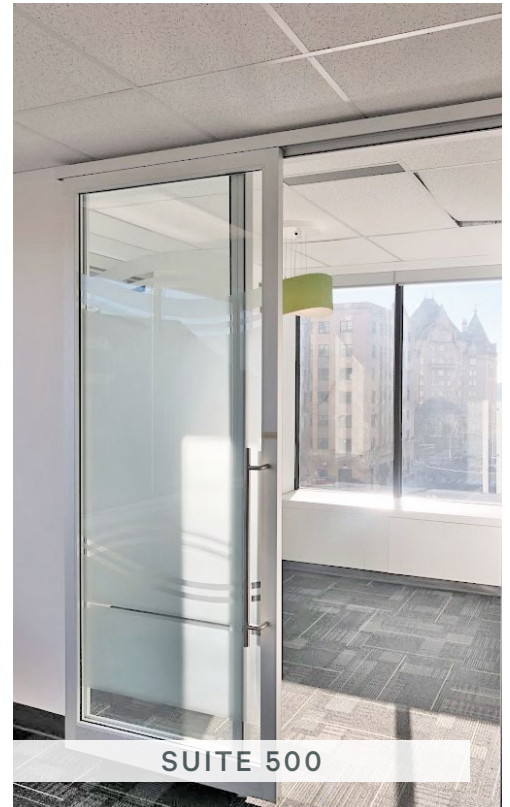


FOURTH FLOOR

SUITE 440 | 1,976 SF



- + 4 private offices
- + Reception
- + Open work area
- + Boardroom
- + Kitchenette
- + Move-in-ready



FIFTH FLOOR

SUITE 500 | 5,200 SF

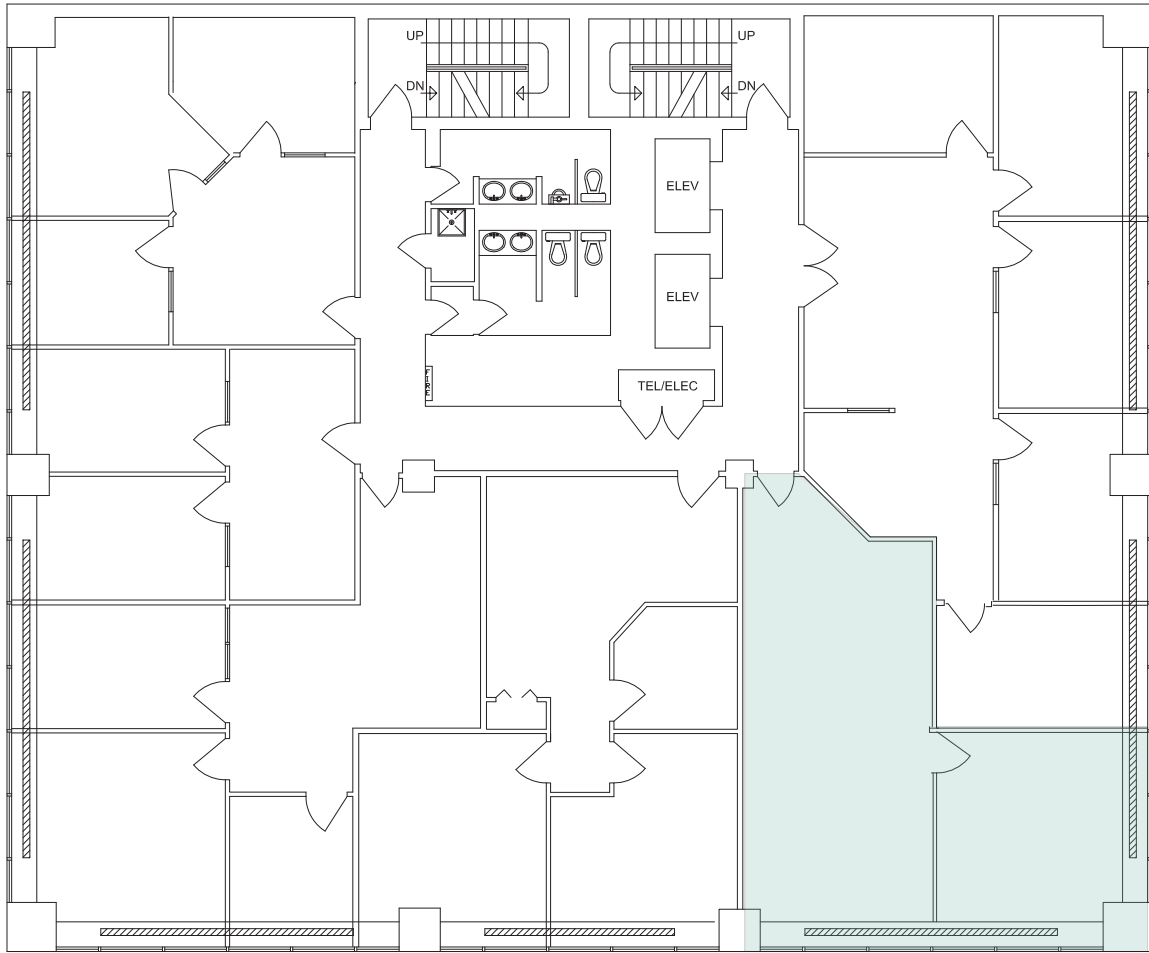
Full Floor Opportunity

- + Direct elevator access
- + Primarily open work area
- + Offices / meeting rooms
- + Boardroom
- + 2 kitchenettes
- + Show suite condition



100 Street Place

10150 100 Street NW | Edmonton, AB



SEVENTH FLOOR

SUITE 710 | 801 SF

- + 1 office
- + Open work area





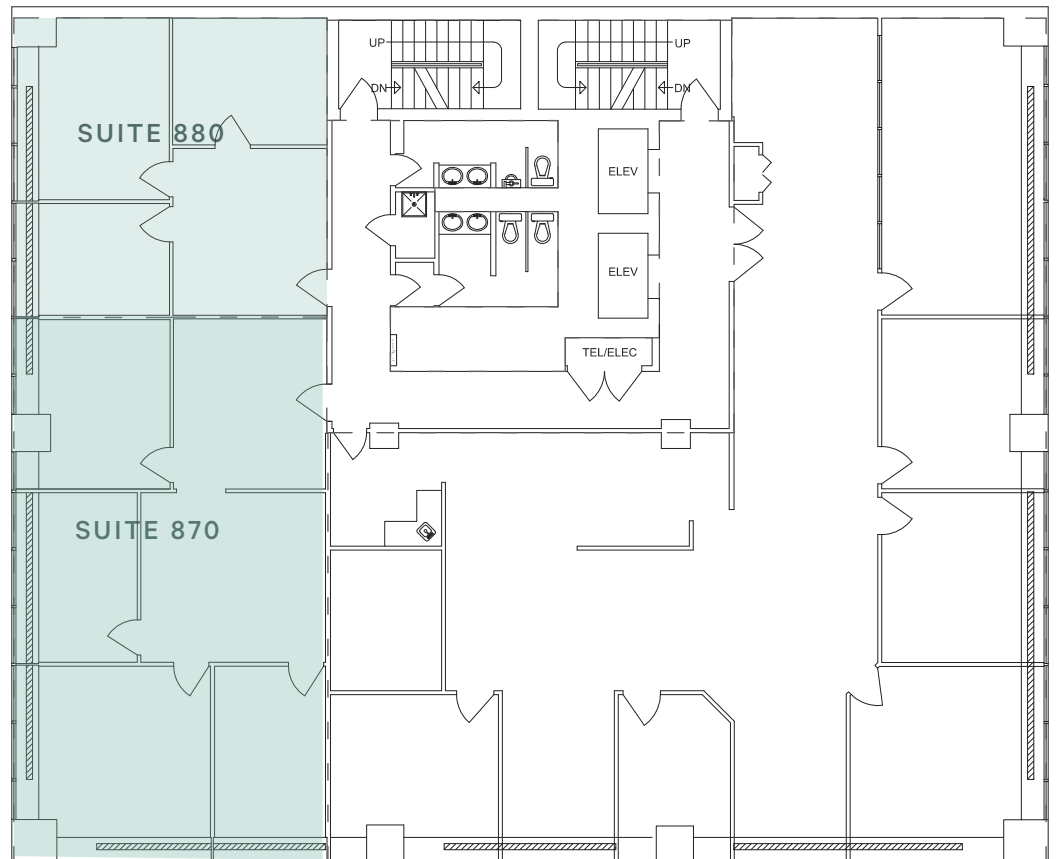
EIGHTH FLOOR

SUITE 880 | 687 SF

- + Reception / open area
- + 3 offices / meeting rooms
- + Move-in-ready

SUITE 870 | 1,254 SF

- + Reception
- + Open work area
- + 4 offices / meeting rooms
- + Move-in-ready



100 Street Place

10150 100 Street NW | Edmonton, AB

For Lease

Walk Times

2 MIN to Edmonton City Centre
Pedway Connected

2 MIN to Enbridge Centre
Pedway Connected

2 MIN to Manulife Place
Pedway Connected

2 MIN to Commerce Place
Pedway Connected

Centennial Plaza Park Redevelopment

Centennial Plaza will be conveniently located directly across the street from 100 Street Place (see 'Future Park' on map). This reimagined space will provide tenants a park setting to enjoy, and also be used to host public events.



Contact Us

Sarah Henderson
Senior Associate
+1 780 917 4636
sarah.henderson@cbre.com

Matteo Marocco
Sales Representative
+1 780 229 4691
matteo.marocco@cbre.com

Jeremy Deeks
Vice President
+1 780 229 4651
jeremy.deeks@cbre.com

This disclaimer shall apply to CBRE Limited, and to all divisions of the Corporation ("CBRE"). The information set out herein (the "Information") has not been verified by CBRE, and CBRE does not represent, warrant or guarantee the accuracy, correctness and completeness of the Information. CBRE does not accept or assume any responsibility or liability, direct or consequential, for the Information or the recipient's reliance upon the Information. The recipient of the Information should take such steps as the recipient may deem necessary to verify the Information prior to placing any reliance upon the Information. The Information may change and any property described in the Information may be withdrawn from the market at any time without notice or obligation to the recipient from CBRE.