



3027 HARVESTER RD BURLINGTON, ON

\$15.00 psf
Net Rent

\$11.95 psf
Additional Rent (2023)

2,724 – 3,961
Square Feet

- ▶ Centrally located near Harvester Road & Guelph Line minutes to QEW
- ▶ Combination of private & open office area
- ▶ Surface parking available (4.5/1,000 sf)
- ▶ Located close to restaurants and shopping
- ▶ Fully handicap accessible

Kevin J. McAleese
Broker of Record, SIOR
905-634-4567
mcaleese@bbsrealty.com

Rod Wright, *B.A.Sc.*
Sales Representative
905-634-4567
wright@bbsrealty.com

**BLAIR
BLANCHARD
STAPLETON**

HALTON LTD.
REAL ESTATE BROKERAGE

3027

**HARVESTER RD
BURLINGTON, ONTARIO**

NET RENT

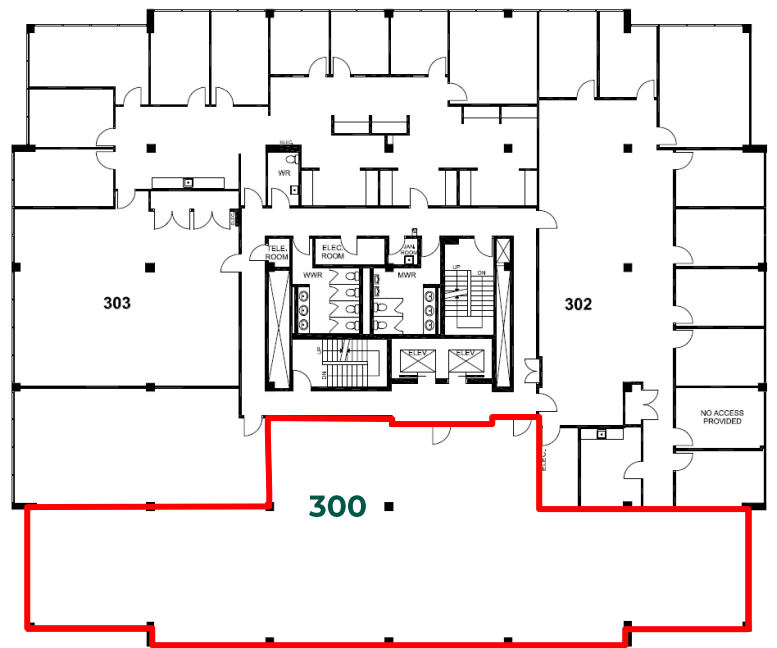
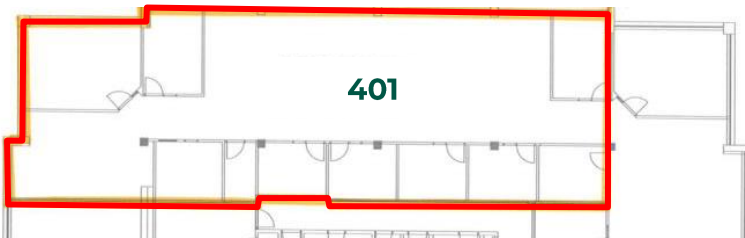
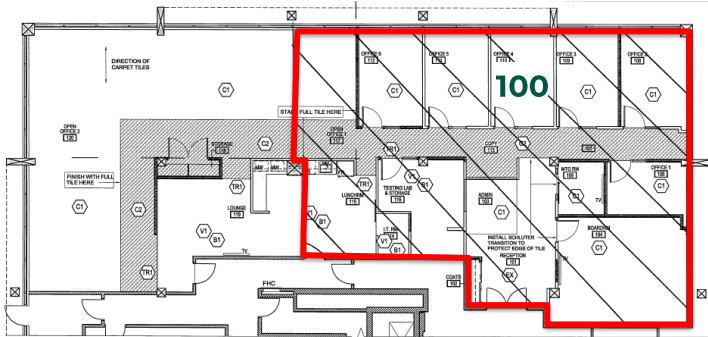
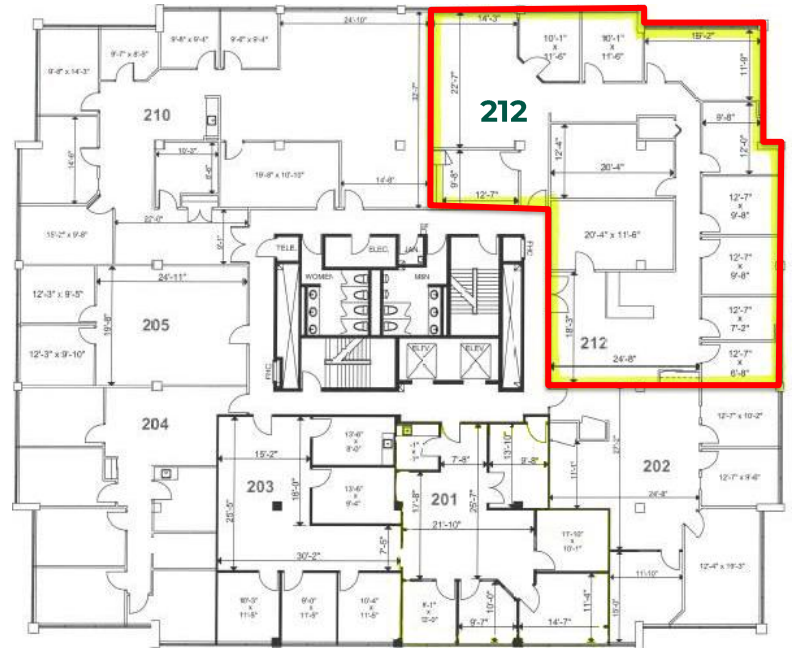
\$15.00 psf

ADDITIONAL RENT

\$11.95 psf (2023 est)

AVAILABLE SUITES

Suite 100:	2,724 sq. ft.
Suite 212:	3,410 sq. ft.
Suite 300:	3,961 sq. ft.
Suite 401:	3,778 sq. ft.



Kevin J. McAleese
Broker of Record, SIOR
905-634-4567
mcaleese@bbsrealty.com

Rod Wright, B.A.Sc.
Sales Representative
905-634-4567
wright@bbsrealty.com

BURLINGTON OFFICE
5500 North Service Road, Suite 204,
Burlington, ON L7L 6W6
O: 905.634.4567 F: 905.637.8724

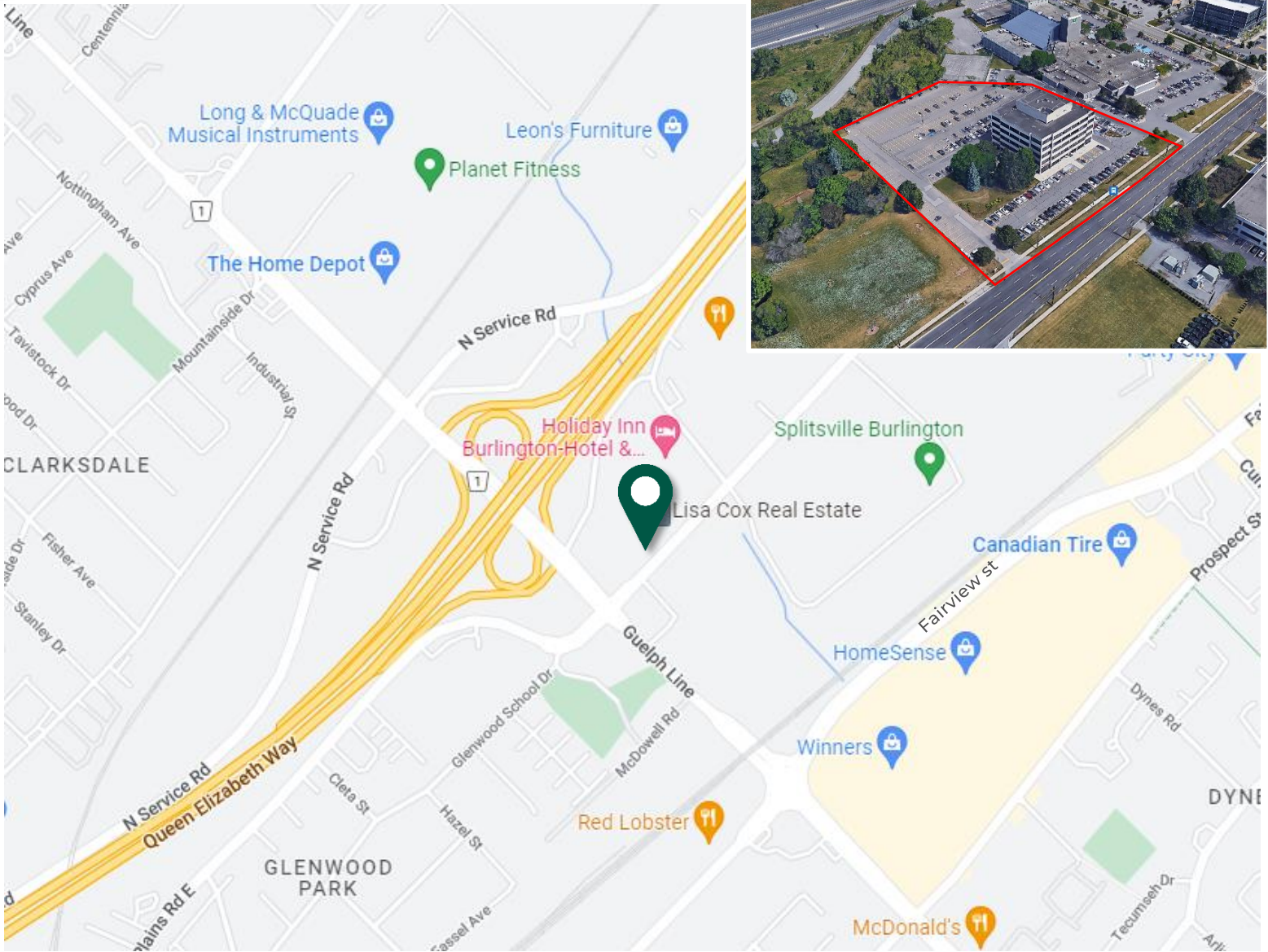
BBSREALTY.COM

**BLAIR
BLANCHARD
STAPLETON**

HALTAM LTD.
REAL ESTATE BROKERAGE

3027

**HARVESTER RD
BURLINGTON, ONTARIO**



The information contained herein is provided by the building owner or their agents or representatives and although such information has been obtained from sources considered to be reliable, Blair Blanchard Stapleton Halton Ltd. makes no representation or warranty as to the accuracy or completeness thereof. The information herein contained is subject to change without notice.

Kevin J. McAleese
Broker of Record, SIOR
905-634-4567
mcaleese@bbsrealty.com

Rod Wright, B.A.Sc.
Sales Representative
905-634-4567
wright@bbsrealty.com

BURLINGTON OFFICE
5500 North Service Road, Suite 204,
Burlington, ON L7L 6W6
O: 905.634.4567 F: 905.637.8724

BBSREALTY.COM