

# FOR LEASE

105 MURRAY STREET

Ottawa, ON K1N 5M5



**JOHN ZINATI**  
613.853.4106  
john@zinatirealty.com

92 CENTREPOINTE DRIVE • OTTAWA, ON K2G 6B1 • 613.853.4106 • ZINATIREALTY.COM

 **ZINATI**  
REALTY  
COMMERCIAL BROKERAGE



### OFFERING SUMMARY

Available SF:	3,271 SF
Lease Rate:	\$15.00 SF/yr (NNN)
Additional Rent:	approx. \$14.59 PSF

### PROPERTY OVERVIEW

Second floor (walk up) office space located in the Byward Market overlooking Murray Street. This stylishly fixtured, bright and modern office space (approx. 3,271 SF) features three enclosed offices, large open concept area, boardroom, exposed ceilings, brick walls, concrete floors, suspended lighting, and plenty of natural light. Building location is ideal for businesses seeking talented individuals who thrive on the "live, work, play" atmosphere.

### PROPERTY HIGHLIGHTS

- The ByWard Market draws locals and tourists alike to its bustling Farmer's Markets, restaurants, boutiques, and cafes
- Staff and clients will enjoy the endless amounts of shops and amenities that the Byward Market has to offer
- Available November 2024
- Utilities included

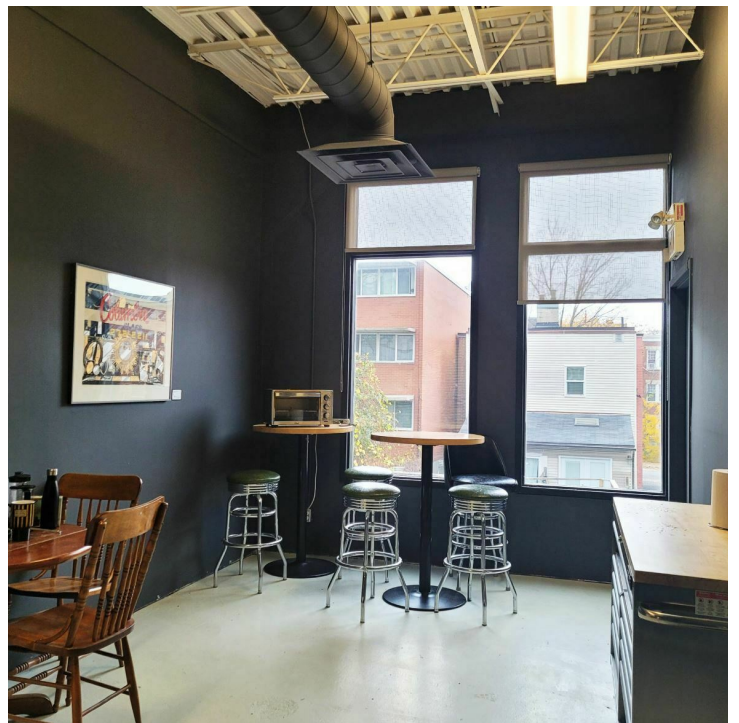
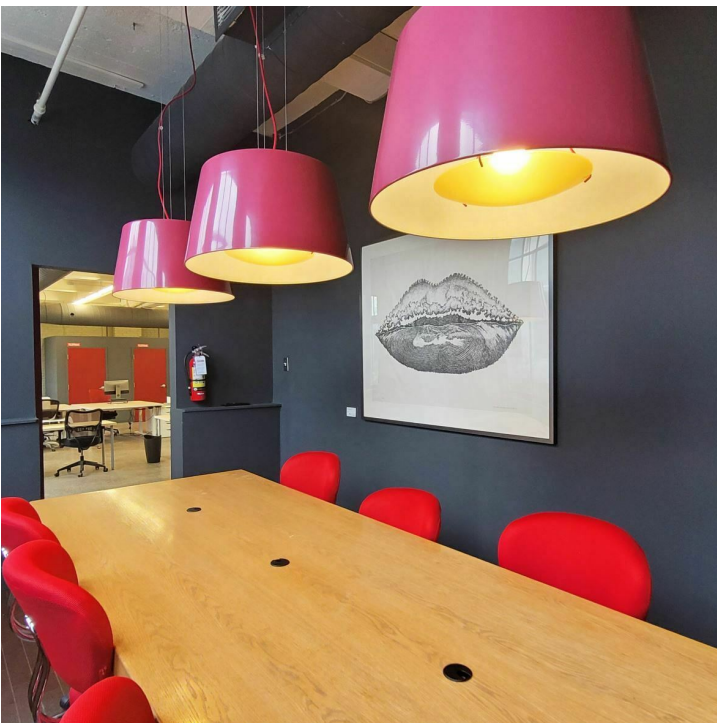
**JOHN ZINATI**  
613.853.4106  
john@zinatirealty.com

92 CENTREPOINTE DRIVE • OTTAWA, ON K2G 6B1 • 613.853.4106 • ZINATIREALTY.COM



# 105 MURRAY STREET OTTAWA, ON K1N 5M5

Additional Photos



**JOHN ZINATI**  
613.853.4106  
john@zinatirealty.com

92 CENTREPOINTE DRIVE • OTTAWA, ON K2G 6B1 • 613.853.4106 • ZINATIREALTY.COM

**ZINATI**  
REALTY  
COMMERCIAL BROKERAGE

# 105 MURRAY STREET OTTAWA, ON K1N 5M5

Retailer Map



**JOHN ZINATI**  
613.853.4106  
john@zinatirealty.com

92 CENTREPOINTE DRIVE • OTTAWA, ON K2G 6B1 • 613.853.4106 • ZINATIREALTY.COM

**ZINATI**  
REALTY  
COMMERCIAL BROKERAGE