

For Lease

Whitewater Place

1717 - 10 Street NW, Calgary, AB



Steven Goertz

Principal

+1 403 232 4322

steven.goertz@avisonyoung.com

Jacob Robinson

Associate

+1 403 805 9093

jacob.robinson@avisonyoung.com

**AVISON
YOUNG**

Particulars

Municipal address 1717 - 10 Street NW, Calgary, AB

Available space Suite 101 - 1,018 sf

Net rent Market

Operating costs \$19.02 (est. 2024)

Parking 2 Stalls @ \$160.00/stall/month

Occupancy 30 days

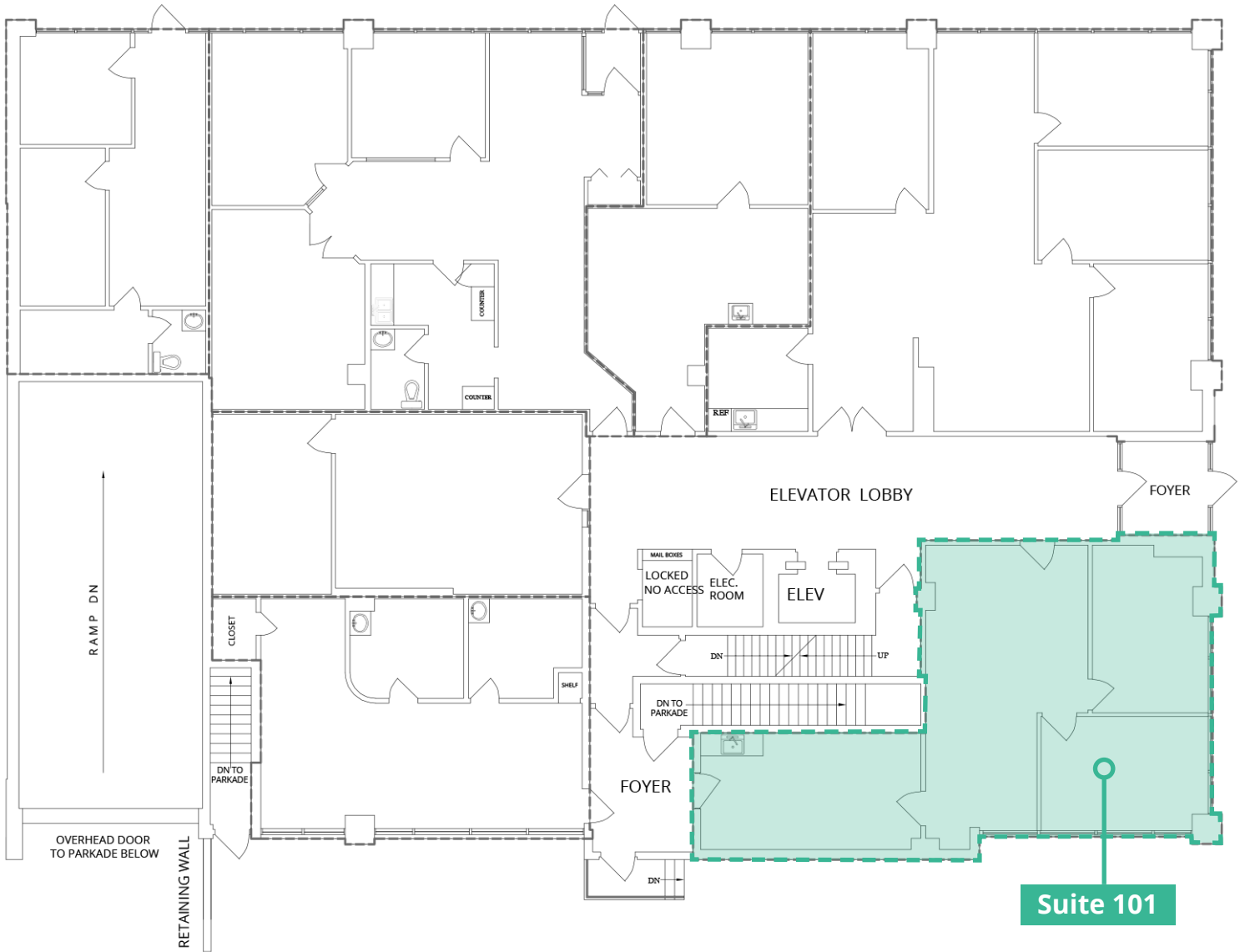


Highlights

- Central Northwest building steps away from 16th Avenue, which includes ample retailers such as Earls Kitchen and Bar, Starbucks, Carl's Jr, etc.
- Easy access to transit with a 2-minute walk from bus stops and close to Sait LRT Station
- The space is built out with a mix of two offices, an open area, storage and a kitchenette
- Main floor access with the potential for direct access to be constructed

Floorplan

Suite 101 - 1,018 sf



Amenity map

1717 - 10 Street NW, Calgary, AB



1. Jimmy's A&A Mediterranean
2. Showhome Furniture
3. Indian Tavern Kitchen & Bar
4. Loco Lou's Arcade Bar & Grill
5. Petro-Canada
6. Sushi BBQ Inn

7. Subway
8. Carl's Jr.
9. Starbucks
10. Earls Kitchen + Bar
11. Tim Hortons
12. La Viena Italian Restaurant

13. PHO Kingdom Vietnamese
14. Pablo Cheese Tart
15. The Cat 'n Fiddle Pub
16. The Highwood Kitchen + Bar

We look forward to working with you!

If you would like more information,
please contact:

Steven Goertz

Principal

+1 403 232 4322

steven.goertz@avisonyoung.com

Jacob Robinson

Associate

+1 403 805 9093

jacob.robinson@avisonyoung.com

Visit us online

avisonyoung.com

© 2024. Avison Young. Information contained herein was obtained from sources deemed reliable and, while thought to be correct, have not been verified. Avison Young does not guarantee the accuracy or completeness of the information presented, nor assumes any responsibility or liability for any errors or omissions therein.

Eighth Avenue Place, 4300, 525 - 8th Avenue SW | Calgary, AB T2P 1G1 | +1 403 262 3082

**AVISON
YOUNG**