



10468 - 176 STREET
EDMONTON, ALBERTA

**SUITE CAN BE AVAILABLE
WITHIN 30 DAYS NOTICE**

**\$14.00/SQ.FT GROSS RENTAL
RATE (3-5 YEAR LEASE TERM)**

Property Highlights

- Strategically located in West Edmonton
- Fully developed with 3 to 4 offices, kitchenette, 2 bathrooms and large open reception area
- 3,000 sq.ft. of open bay
- 12'x 16' grade loading overhead door
- 200 amp power
- Move in ready with updated flooring for new tenant
- Double row surface parking
- Well maintained and managed property
- Easy access to Stony Plain Road and Anthony Henday Drive

Daniel A. Amero

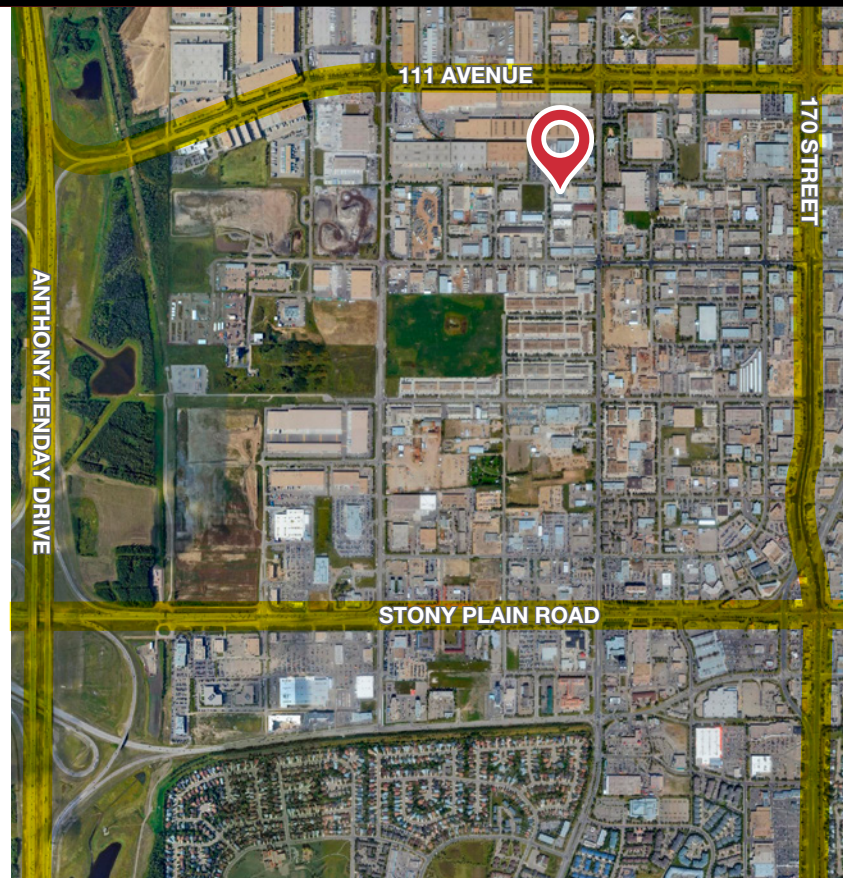
780 436 7415 • damero@naiedmonton.com

Kevin Mockford

587 635 2484 • kmockford@naiedmonton.com

Gordie Lough

587 635 5610 • glough@naiedmonton.com

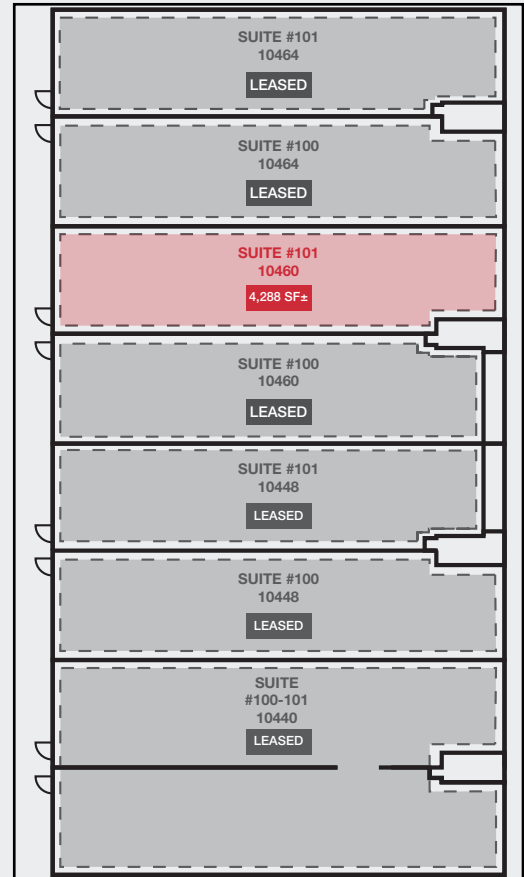


10468 - 176 STREET
EDMONTON, ALBERTA

FOR LEASE
WEST END INDUSTRIAL BUILDING
INDUSTRIAL SUITE 4,288 SQ.FT.±

ADDITIONAL INFORMATION

SIZE AVAILABLE	4,288 sq.ft.±
OFFICE SIZE	1,000 sq.ft. (per suite)
LEGAL DESCRIPTION	Lot: 1A, Block: 6, Plan: 8922420
ZONING	Business Employment (BE)
CEILING HEIGHT	19 ft.
HEATING	Furnace
POWER	200 amp
LOADING	Grade loading
PARKING	Double row
AVAILABLE	30 days notice
LEASE TERM	3-5 years
MODIFIED GROSS RATE	\$14.00/sq.ft./annum Includes common area maintenance, property taxes, building insurance, management fees. Utilities not included.



Daniel A. Amero
780 436 7415
damero@naiedmonton.com

Kevin Mockford
587 635 2484
kmockford@naiedmonton.com

Gordie Lough
587 635 5610
glough@naiedmonton.com

4709-F-8 DA24



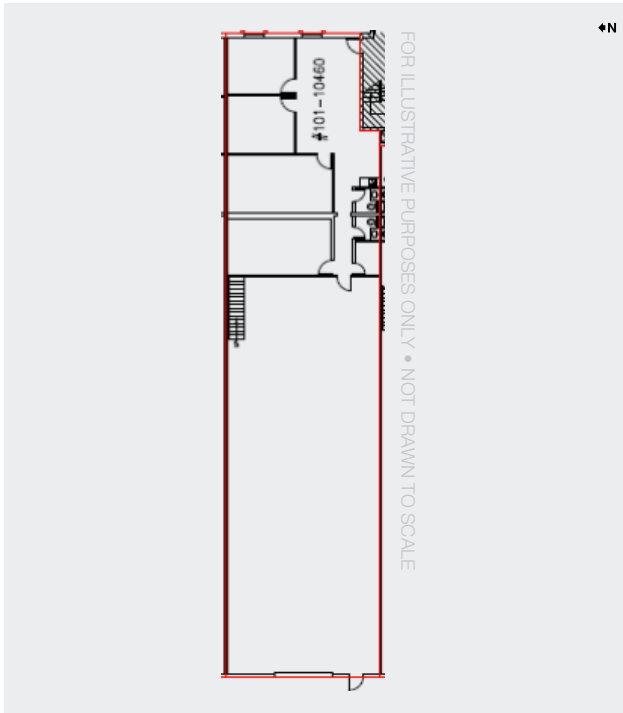
10468 - 176 STREET

EDMONTON, ALBERTA

FOR LEASE

WEST END INDUSTRIAL BUILDING

INDUSTRIAL SUITE 4,288 SQ.FT.±



SUITE 101, 10460 - 176 STREET: 4,288 SQ.FT.±



AVAILABLE WITHIN 30 DAYS NOTICE

Daniel A. Amero

780 436 7415

damero@naiedmonton.com

Kevin Mockford

587 635 2484

kmockford@naiedmonton.com

Gordie Lough

587 635 5610

glough@naiedmonton.com

4709-F-8 DA24

NAI Commercial

NAI COMMERCIAL REAL ESTATE INC. | 4601 99 Street NW Edmonton, AB T6E 4Y1 | 780 436 7410 | naiedmonton.com